

ARG30202 Phospho p70 S6 Kinase Antibody Duo (Total, pS411)

Package: 1 pair
Store at: -20°C

Component

| Cat. No. | Component Name | Host clonality | Reactivity | Application | Package |
|----------|--|----------------|-------------|-------------------|---------|
| ARG51236 | anti-p70 S6 Kinase antibody | Rabbit pAb | Hu, Ms, Rat | ICC/IF, IHC-P, WB | 50 µl |
| ARG51753 | anti-p70 S6 Kinase phospho (Ser411) antibody | Rabbit pAb | Hu, Ms, Rat | ICC/IF, IHC-P, WB | 50 µl |

Summary

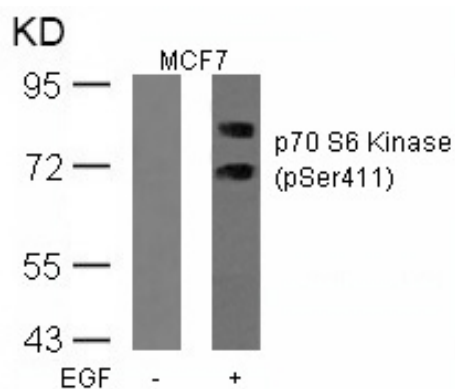
| | |
|---------------------|--|
| Product Description | p70S6 Kinase phosphorylates specifically ribosomal protein S6 in response to Insulin or several classes of mitogens. It has been shown to be required for cell growth, cell cycle progression and is involved in translational control mechanism. p70S6K can be phosphorylated by Ang II at the Ser-411 site and the phosphorylation appear to involve EGF receptor transactivation and inhibited by dominant-negative Ras. Dufner, A. and Thomas, G. (1999) Exp Cell Res 253, 100-9. Eguchi, S. (1999) JBC(274): 36843-51 |
| Target Name | p70 S6 Kinase |
| Alternate Names | Phospho p70 S6 Kinase antibody; p70 S6 Kinase antibody; p70 S6 Kinase phospho (Ser411) antibody |

Properties

| | |
|---------------------|--|
| Storage instruction | For continuous use, store undiluted antibody at 2-8°C for up to a week. For long-term storage, aliquot and store at -20°C or below. Storage in frost free freezers is not recommended. Avoid repeated freeze/thaw cycles. Suggest spin the vial prior to opening. The antibody solution should be gently mixed before use. |
| Note | For laboratory research only, not for drug, diagnostic or other use. |

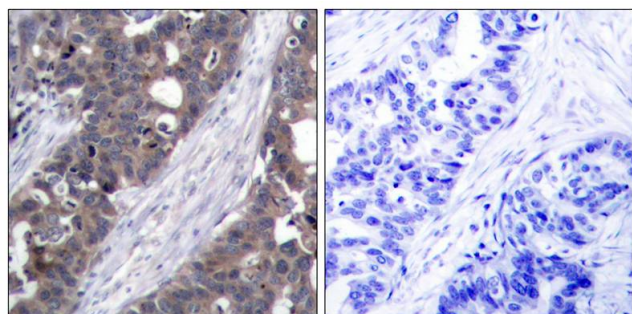
Bioinformation

| | |
|----------------|---|
| Gene Full Name | Antibody Duo for Phospho p70 S6 Kinase (Total, pS411) |
| Research Area | Cell Biology and Cellular Response antibody; Gene Regulation antibody; Metabolism antibody; Signaling Transduction antibody |



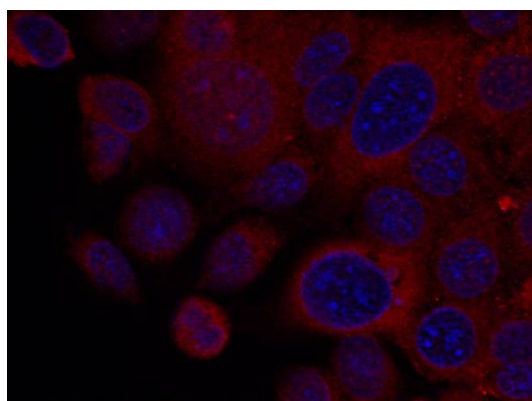
ARG51753 anti-p70 S6 Kinase phospho (Ser411) antibody WB image

Western Blot: extracts from MCF cells untreated or treated with EGF stained with anti-p70 S6 Kinase (phospho Ser411) antibody ARG51753.



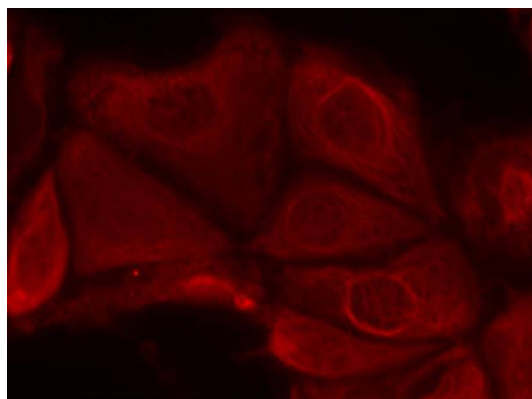
ARG51236 anti-p70 S6 Kinase antibody IHC-P image

Immunohistochemistry: paraffin-embedded human breast carcinoma tissue stained with anti-p70 S6 Kinase antibody ARG51236 (left) or the same antibody preincubated with blocking peptide (right).



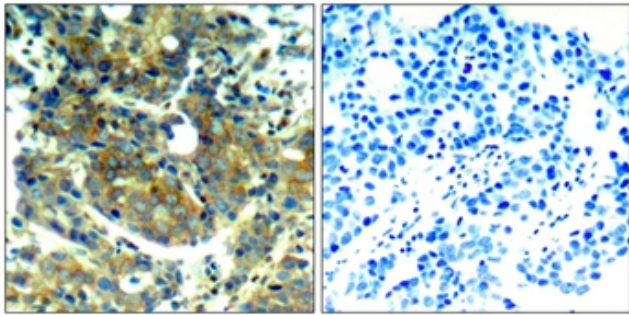
ARG51236 anti-p70 S6 Kinase antibody ICC/IF image

Immunofluorescence: methanol-fixed MCF7 cells stained with anti-p70 S6 Kinase antibody ARG51236.



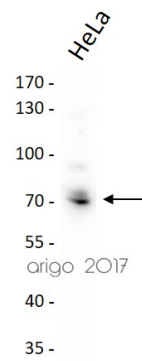
ARG51753 anti-p70 S6 Kinase phospho (Ser411) antibody ICC/IF image

Immunofluorescence: methanol-fixed MCF7 cells stained with anti-p70 S6 Kinase (phospho Ser411) antibody ARG51753.



ARG51753 anti-p70 S6 Kinase phospho (Ser411) antibody IHC-P image

Immunohistochemistry: paraffin-embedded human breast carcinoma tissue stained with anti-p70 S6 Kinase (phospho Ser411) antibody ARG51753 (left) or the same antibody preincubated with blocking peptide (right).



ARG51236 anti-p70 S6 Kinase antibody WB image

Western blot: 30 µg of HeLa cell lysate stained with ARG51236 anti-p70 S6 Kinase antibody at 1:500 dilution.