

## ARG30211 Phospho Tau Antibody Panel (Total, pS396, pS404)

Package: 1 kit  
Store at: -20°C

### Component

Cat. No.	Component Name	Host clonality	Reactivity	Application	Package
ARG51614	anti-Tau phospho (Ser404) antibody	Rabbit pAb	Hu, Ms, Rat	ICC/IF, IHC-P, WB	50 µl
ARG51604	anti-Tau phospho (Ser396) antibody	Rabbit pAb	Hu, Ms, Rat	IHC-P, WB	50 µl
ARG51094	anti-Tau antibody	Rabbit pAb	Hu, Ms, Rat	IHC-P, WB	50 µl
ARG65351	Goat anti-Rabbit IgG antibody (HRP)	Goat pAb	Rb	ELISA, IHC-P, WB	50 µl

### Summary

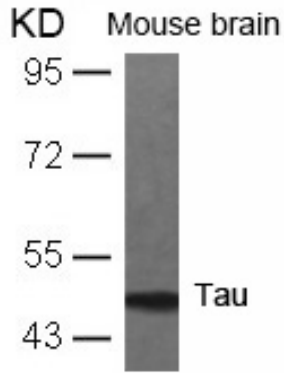
Product Description	Tau is a group of neuronal microtubule-associated proteins that are formed by alternative mRNA splicing and accumulate in neurofibrillary tangles in Alzheimer's disease (AD) brain. Tau plays a key role in regulating microtubule dynamics, axonal transport and neurite outgrowth, and all these functions of tau are modulated by site-specific phosphorylation. Phosphorylation of Tau (Isoform Tau-F) at Ser296 and Ser404 sites by Tau Protein Kinase II is responsible for the functional loss of tau-mediated tubulin polymerization in AD. Evans et al. 2000. J Biol Chem 275(32): 24977-83 Stoothoff and Johnson. 2005. Biochem Biophys Acta 1739(2-3): 280-97
Target Name	Tau
Alternate Names	Phospho Tau antibody; Tau antibody; Tau phospho (Ser396) antibody; Tau phospho (Ser404) antibody

### Properties

Storage instruction	For continuous use, store undiluted antibody at 2-8°C for up to a week. For long-term storage, aliquot and store at -20°C or below. Storage in frost free freezers is not recommended. Avoid repeated freeze/thaw cycles. Suggest spin the vial prior to opening. The antibody solution should be gently mixed before use.
Note	For laboratory research only, not for drug, diagnostic or other use.

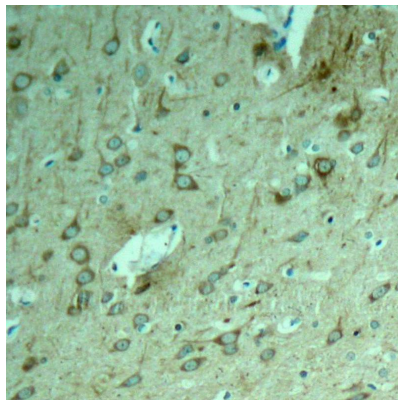
### Bioinformation

Gene Full Name	Antibody Panel for Phospho Tau (Total, pS396, pS404)
Research Area	Immune System antibody; Neuroscience antibody; Signaling Transduction antibody



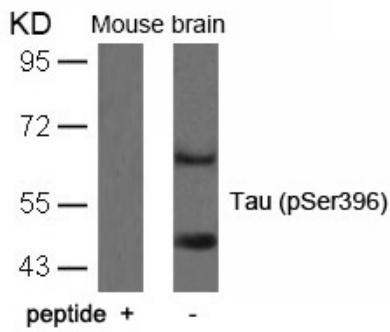
ARG51094 anti-Tau antibody WB image

Western Blot: extracts from mouse brain tissue stained with anti-Tau antibody ARG51094.



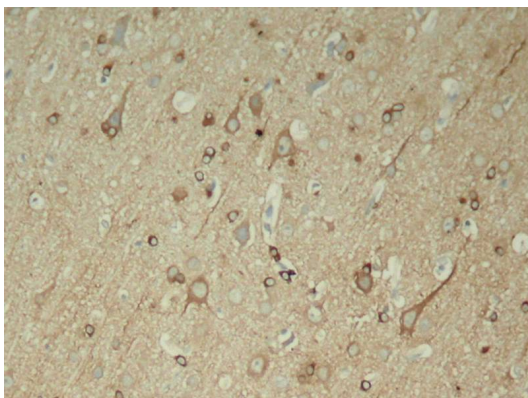
ARG51094 anti-Tau antibody IHC-P image

Immunohistochemistry: paraffin-embedded rat hippocampal region tissue from a model with Alzheimer stained with anti-Tau antibody ARG51094



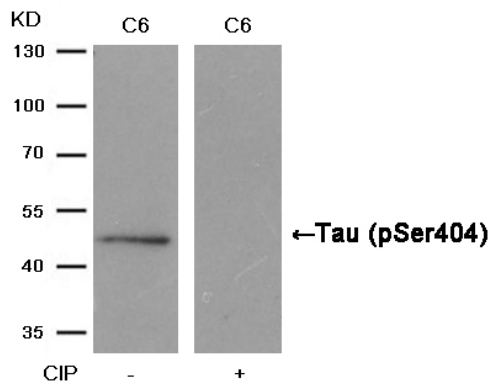
ARG51604 anti-Tau phospho (Ser396) Antibody WB image

Western Blot: extracts from mouse brain tissue stained with anti-Hsp90 antibody [D7 alpha] ARG51604 and the same antibody preincubated with blocking peptide.



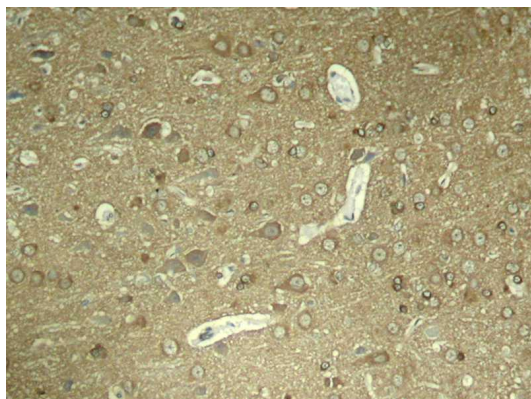
ARG51604 anti-Tau phospho (Ser396) Antibody IHC-P image

Immunohistochemistry: paraffin-embedded rat hippocampal region tissue from a model with Alzheimer stained with anti-Hsp90 antibody [D7 alpha] ARG51604



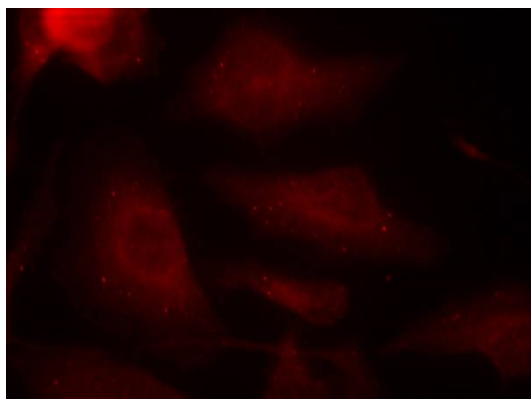
ARG51614 anti-Tau phospho (Ser404) antibody WB image

Western Blot: extracts from C6 cells, treated with calf intestinal phosphatase (CIP), stained with anti-Tau (phospho Ser404) antibody ARG51614.



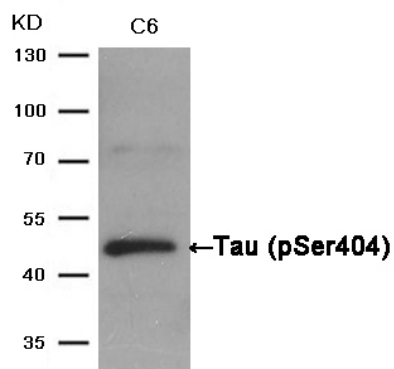
ARG51614 anti-Tau phospho (Ser404) antibody IHC-P image

Immunohistochemistry: paraffin-embedded rat hippocampal region tissue from a model with Alzheimer stained with anti-Tau (phospho Ser404) antibody ARG51614



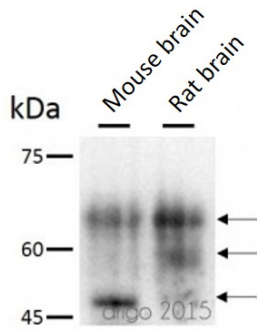
ARG51614 anti-Tau phospho (Ser404) antibody ICC/IF image

Immunofluorescence: methanol-fixed HeLa cells stained with anti-Tau (phospho Ser404) antibody ARG51614.



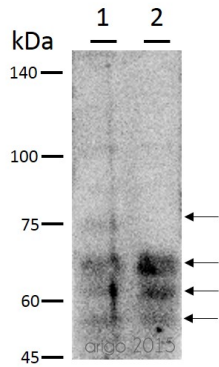
ARG51614 anti-Tau phospho (Ser404) antibody WB image

Western Blot: extracts from C6 cells stained with anti-Tau (phospho Ser404) antibody ARG51614.



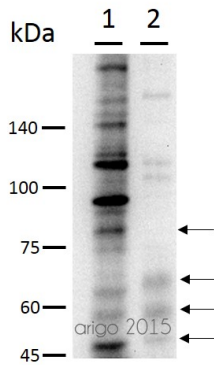
#### ARG51614 anti-Tau phospho (Ser404) antibody WB image

Western blot: 30 µg of Mouse brain and Rat brain tissue lysates stained with ARG51614 anti-Tau phospho (Ser404) antibody at 1:500 dilution.



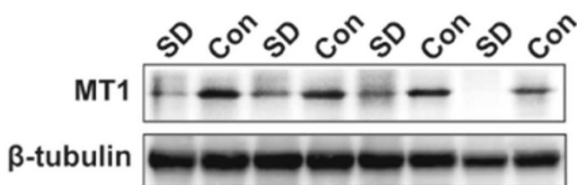
#### ARG51604 anti-Tau phospho (Ser396) antibody WB image

Western blot: 30 µg of 1) Mouse brain and 2) Rat brain tissue lysate stained with ARG51604 anti-Tau phospho (Ser396) antibody at 1:500 dilution.



#### ARG51094 anti-Tau antibody WB image

Western blot: 30 µg of 1) Mouse brain and 2) Rat brain tissue lysate stained with ARG51094 anti-Tau antibody at 1:500 dilution.

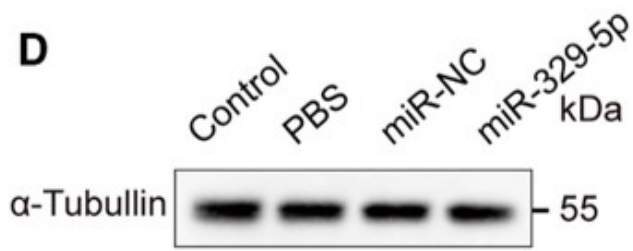


#### ARG65351 Goat anti-Rabbit IgG antibody (HRP) WB image

Western blot: Rat placental stained with [ARG57589 anti-MTNR1A antibody](#) at 1:1000 dilution, ARG65351 Goat anti-Rabbit IgG antibody (HRP) at 1:5000 dilution.

From Jinzhi Li et al. J Reprod Immunol. (2023), [doi: 10.1016/j.jri.2023.104166](https://doi.org/10.1016/j.jri.2023.104166), Fig. 2.B.

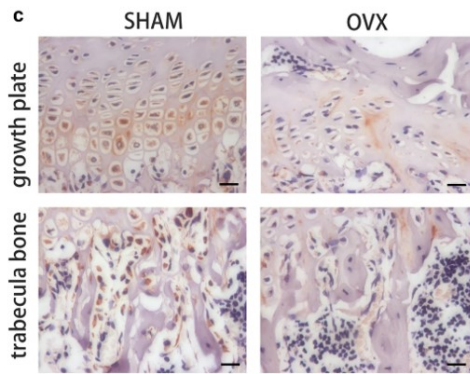
**D**



ARG65351 Goat anti-Rabbit IgG antibody (HRP) WB image

Western blot: Mouse retina stained with [ARG65693 anti-alpha Tubulin antibody](#) and ARG65351 Goat anti-Rabbit IgG antibody (HRP)

From Xiaoyuan Ye et al. Mol Ther Nucleic Acids. (2024), [doi: 10.1016/j.omtn.2024.102209](#), Fig. 5.D.



ARG65351 Goat anti-Rabbit IgG antibody (HRP) IHC-P image

From Yu-Qian Song et al. J Mol Med (Berl) (2022), [doi: 10.1007/s00109-021-02165-0](#), Fig. 5.c.