

ARG30214 Phospho STAT5A Antibody Duo (Total, pY694)

Package: 1 pair
Store at: -20°C

Component

Cat. No.	Component Name	Host clonality	Reactivity	Application	Package
ARG51552	anti-STAT5A phospho (Tyr694) antibody	Rabbit pAb	Hu, Ms, Rat	IHC-P, WB	50 µl
ARG65593	anti-STAT5A antibody	Rabbit pAb	Hu	IHC-P, WB	50 µl

Summary

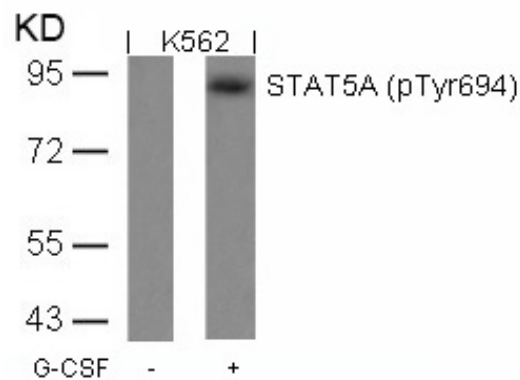
Product Description	STAT5A belongs to STAT family of transcription factors which can be activated by various stimuli such as cytokines and growth factors, including IL-2, GM-CSF, Erythropoietin and Thrombopoietin. The phosphorylation of STAT5A at Tyr694 residue by SRS Kinase upon Erythropoietin stimulation triggers its activation and is responsible for EPO-induced signal transduction. STAT5A phosphorylation can also be induced by Prolactin to increase its DNA binding and transcription ability. Lin and Leonard. 2000. Oncogene 19(21):2566 Okutani et al. 2001. Oncogene 20(45):6643 Gouilleux et al. 1994. EMBO J 13(18):4361-9
Target Name	STAT5A
Alternate Names	Phospho STAT5A antibody; Phospho Signal transducer and activator of transcription 5A antibody; STAT5A phospho (Tyr694) antibody; STAT5A antibody

Properties

Storage instruction	For continuous use, store undiluted antibody at 2-8°C for up to a week. For long-term storage, aliquot and store at -20°C or below. Storage in frost free freezers is not recommended. Avoid repeated freeze/thaw cycles. Suggest spin the vial prior to opening. The antibody solution should be gently mixed before use.
Note	For laboratory research only, not for drug, diagnostic or other use.

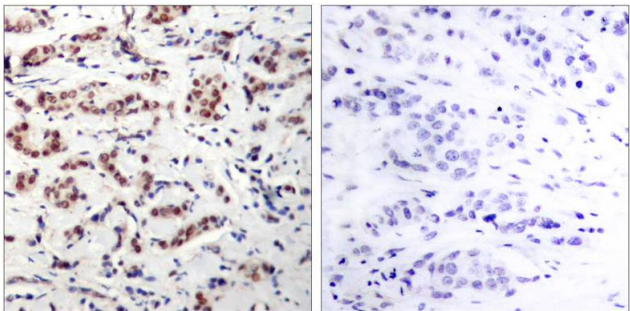
Bioinformation

Gene Full Name	Phospho Signal transducer and activator of transcription 5A (STAT5A) Antibody Duo (Total, pY694)
Research Area	Gene Regulation antibody; Signaling Transduction antibody



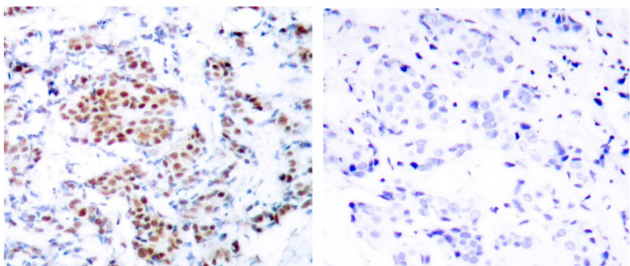
ARG51552 anti-STAT5A phospho (Tyr694) antibody WB image

Western Blot: extracts from K562 cells untreated or treated with G-CSF stained with anti-STAT5A (phospho Tyr694) antibody ARG51552.



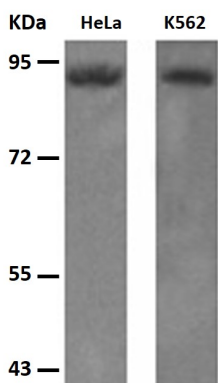
ARG51552 anti-STAT5A phospho (Tyr694) antibody IHC-P image

Immunohistochemistry: paraffin-embedded human breast carcinoma tissue stained with anti-STAT5A (phospho Tyr694) antibody ARG51552 (left) or the same antibody preincubated with blocking peptide (right).



ARG65593 anti-STAT5A Antibody IHC-P image

Immunohistochemistry: paraffin-embedded Human breast carcinoma tissue stained with ARG65593 (STAT5A Antibody) at 1/50 dilution, or the same antibody preincubated with synthetic peptide (right). (Original magnification: $\times 200$)



ARG65593 anti-STAT5A Antibody WB image

Western Blot: ARG65593 STAT5A Antibody at 1/500 dilution with 30 μ g of lysates.
(1) HeLa cell
(2) K562 cell

Exposure time: 1 minute.