

ARG30219 Phospho PDK1 Antibody Duo (Total, pS241)

Package: 1 pair
Store at: -20°C

Component

Cat. No.	Component Name	Host clonality	Reactivity	Application	Package
ARG51509	anti-PDPK1 phospho (Ser241) antibody	Rabbit pAb	Hu, Ms, Rat	ICC/IF, IHC-P, WB	50 µl
ARG51005	anti-PDPK1 antibody	Rabbit pAb	Hu, Ms, Rat	ICC/IF, IHC-P, WB	50 µl

Summary

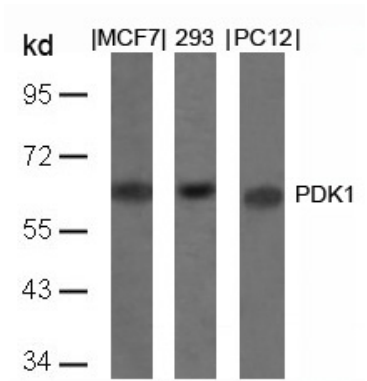
Product Description	3-Phosphoinositide dependent protein kinase -1 (PDK-1) is responsible for regulating activity of AKT by phosphorylating specific threonine and serine residues within its activation loop. PDK-1 itself can be phosphorylated at Ser-25, Ser-241. Ser-393, Ser-396 and Ser-410 by the stimulation of Insulin-like growth factor. Phosphorylation at Ser241 residue is essential for the enzymatic activity of PDK-1. Gagliardi et al. 2012. Neoplasia 14(8):719-31 Casamayor et al. 1999. Biochem J 342: 287-92
Target Name	PDK1
Alternate Names	Phospho PDK1 antibody; PDPK1 antibody; PDPK1 phospho (Ser241) antibody

Properties

Storage instruction	For continuous use, store undiluted antibody at 2-8°C for up to a week. For long-term storage, aliquot and store at -20°C or below. Storage in frost free freezers is not recommended. Avoid repeated freeze/thaw cycles. Suggest spin the vial prior to opening. The antibody solution should be gently mixed before use.
Note	For laboratory research only, not for drug, diagnostic or other use.

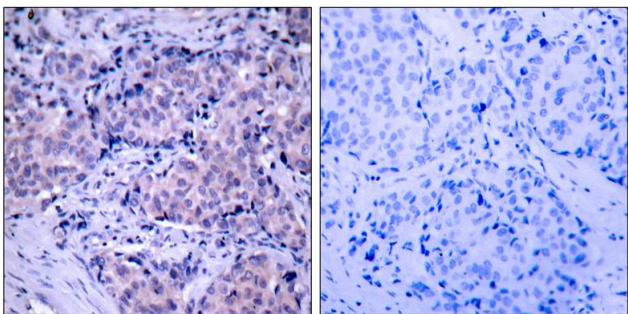
Bioinformation

Gene Full Name	Phospho PDK1 Antibody Duo (Total, pS241)
Research Area	Signaling Transduction antibody



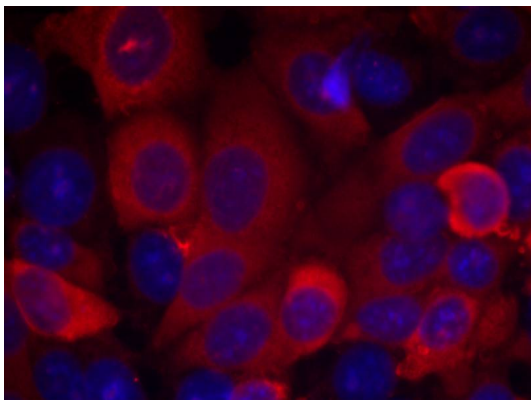
ARG51005 anti-PDK1 antibody WB image

Western Blot: extracts from MCF, 293 and PC12 cells stained with anti-PDK1 antibody ARG51005.



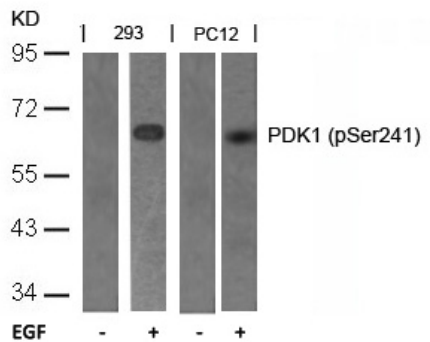
ARG51005 anti-PDK1 antibody IHC-P image

Immunohistochemistry: paraffin-embedded human breast carcinoma tissue stained with anti-PDK1 antibody ARG51005 (left) or the same antibody preincubated with blocking peptide (right).



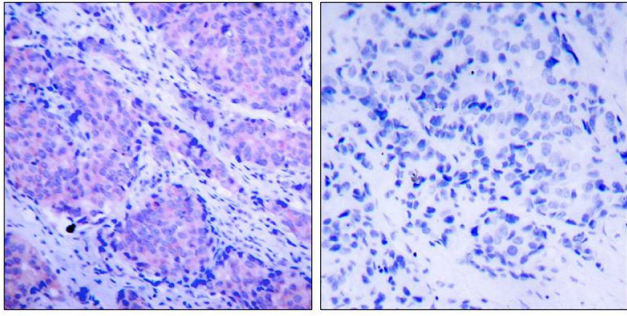
ARG51005 anti-PDK1 antibody ICC/IF image

Immunofluorescence: methanol-fixed MCF7 cells stained with anti-PDK1 antibody ARG51005.



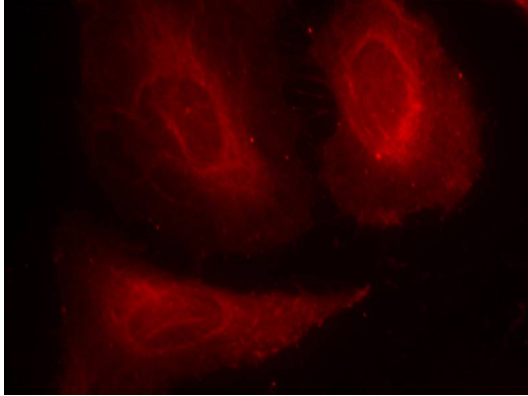
ARG51509 anti-PDK1 phospho (Ser241) antibody WB image

Western Blot: extracts from 293 and PC12 cells untreated or treated with EGF stained with anti-PDK1 (phospho Ser241) antibody ARG51509.



ARG51509 anti-PDK1 phospho (Ser241) antibody IHC-P image

Immunohistochemistry: paraffin-embedded human breast carcinoma tissue stained with anti-PDK1 (phospho Ser241) antibody ARG51509 (left) or the same antibody preincubated with blocking peptide (right).



ARG51509 anti-PDK1 phospho (Ser241) antibody ICC/IF image

Immunofluorescence: methanol-fixed HeLa cells stained with anti-PDK1 (phospho Ser241) antibody ARG51509.