

## ARG30227 Phospho ATF2 Antibody Panel (Total, pT69, pT71)

Package: 1 kit  
Store at: -20°C

### Component

Cat. No.	Component Name	Host clonality	Reactivity	Application	Package
ARG51535	anti-ATF2 phospho (Thr71 or 53) antibody	Rabbit pAb	Hu, Ms, Rat	IHC-P, WB	50 µl
ARG51534	anti-ATF2 phospho (Thr69 or 51) antibody	Rabbit pAb	Hu, Ms, Rat	ICC/IF, IHC-P, WB	50 µl
ARG63122	anti-ATF2 antibody	Goat pAb	Hu	WB	50 µg
ARG65351	Goat anti-Rabbit IgG antibody (HRP)	Goat pAb	Rb	ELISA, IHC-P, WB	50 µl
ARG65352	Donkey anti-Goat IgG antibody (HRP)	Donkey pAb	Goat	ELISA, IHC-P, WB	50 µl

### Summary

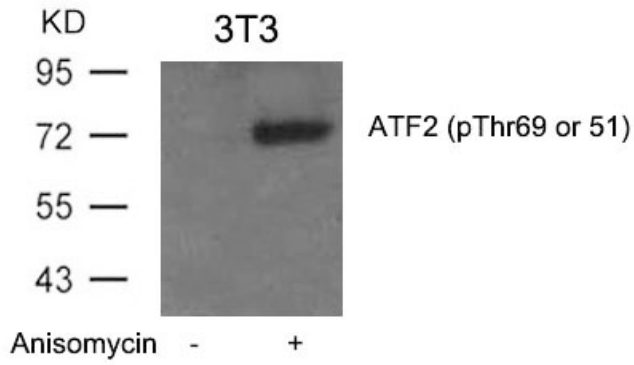
Product Description	The activating transcription factor (ATF) and cAMP-response-element binding (CREB) families of transcription factors comprise 16 members of the activator protein 1 (AP1) transcription factor superfamily. ATF and CREB proteins can homodimerize or heterodimerize with members of the Jun, Fos or Maf transcription factor families to form complexes that regulate diverse cellular functions, such as stress responses, embryonic development, disease development and cell death. ATF2 requires phosphorylation by Jun N-terminal kinase (JNK), p38 (MAPK14), or extracellular-signal-regulated kinase 1 (ERK1) at Thr69 and Thr71 residues in order to be transcriptionally active. Lau and Ronai. 2012. J Cell Sci 125:2815 Morton et al. 2004. FEBS Lett 572:177-83 Waas et al. 2001. J Biol Chem 276(8):5676
Target Name	ATF2
Alternate Names	Phospho ATF2 antibody; Phospho Activating transcription factor 2 antibody; ATF2 phospho (Thr69 or 51) antibody; ATF2 phospho (Thr71 or 53) antibody; ATF2 antibody

### Properties

Storage instruction	For continuous use, store undiluted antibody at 2-8°C for up to a week. For long-term storage, aliquot and store at -20°C or below. Storage in frost free freezers is not recommended. Avoid repeated freeze/thaw cycles. Suggest spin the vial prior to opening. The antibody solution should be gently mixed before use.
Note	For laboratory research only, not for drug, diagnostic or other use.

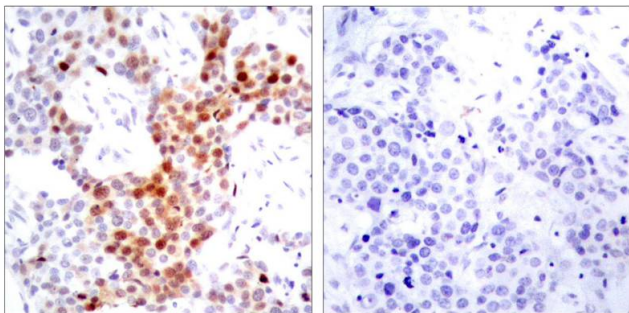
### Bioinformation

Gene Full Name	Phospho Activating transcription factor 2 (ATF2) Antibody Panel (Total, pT69, pT71)
Research Area	Gene Regulation antibody; Immune System antibody



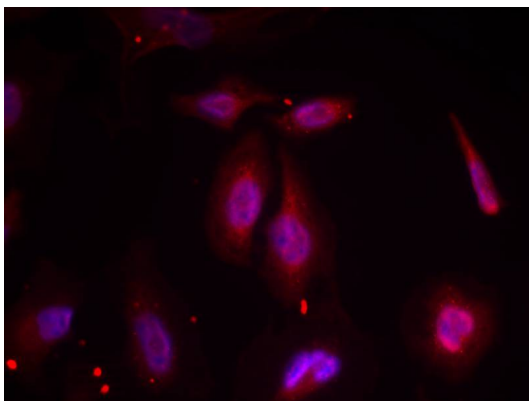
ARG51534 anti-ATF2 phospho (Thr69 or 51) antibody WB image

Western Blot: extracts from 3T3 cells untreated or treated with Anisomycin stained with anti-ATF2 (phospho Thr69 or 51) antibody ARG51534.



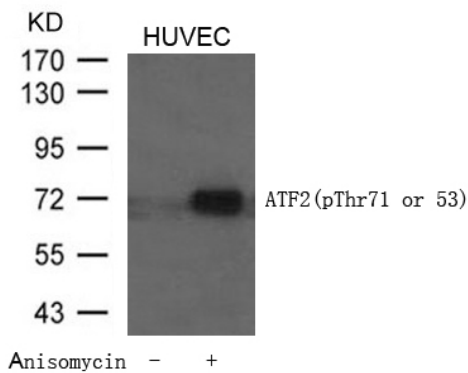
ARG51534 anti-ATF2 phospho (Thr69 or 51) antibody IHC-P image

Immunohistochemistry: paraffin-embedded human breast carcinoma tissue stained with anti-ATF2 (phospho Thr69 or 51) antibody ARG51534 (left) or the same antibody preincubated with blocking peptide (right).



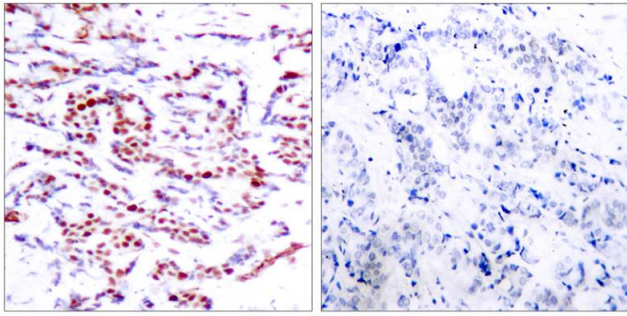
ARG51534 anti-ATF2 phospho (Thr69 or 51) antibody ICC/IF image

Immunofluorescence: methanol-fixed HeLa cells stained with anti-ATF2 (phospho Thr69 or 51) antibody ARG51534.



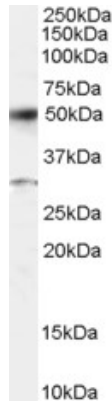
ARG51535 anti-ATF2 phospho (Thr71 or 53) antibody WB image

Western Blot: extracts from HUVEC cells untreated or treated with Anisomycin stained with anti-ATF2 (phospho Thr71 or 53) antibody ARG51535.



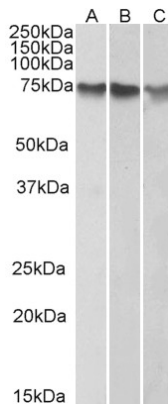
ARG51535 anti-ATF2 phospho (Thr71 or 53) antibody IHC-P image

Immunohistochemistry: paraffin-embedded human breast carcinoma tissue stained with anti-ATF2 (phospho Thr71 or 53) antibody ARG51535 (left) or the same antibody preincubated with blocking peptide (right).



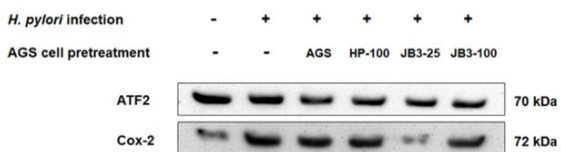
ARG63122 anti-ATF2 antibody WB image

Western Blot: Human Placenta lysate (RIPA buffer, 35 µg total protein per lane) stained with ARG63122 anti-ATF2 antibody at 0.5 µg/ml dilution.



ARG63122 anti-ATF2 antibody WB image

Western Blot: HepG2 (A), K562 (B) and HeLa (C) nuclear lysates (35 µg protein in RIPA buffer) stained with ARG63122 anti-ATF2 antibody at 1 µg/ml dilution.



ARG63122 anti-ATF2 antibody WB image

Western blot: AGS cells stained with [ARG56421 anti-COX2 antibody](#), ARG63122 anti-ATF2 antibody and [ARG65352 Donkey anti-Goat IgG antibody \(HRP\)](#).

From Anh Duy Do et al. Front Immunol. (2022), [doi: 10.3389/fimmu.2021.796177](https://doi.org/10.3389/fimmu.2021.796177), Fig. 5.D.

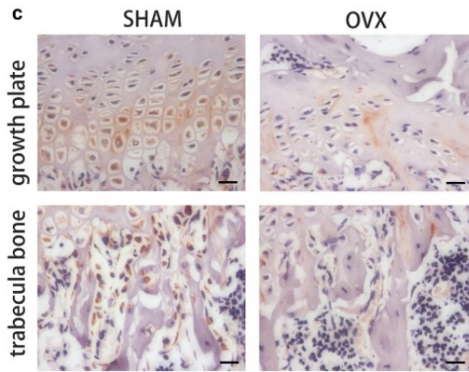
**D**



ARG65351 Goat anti-Rabbit IgG antibody (HRP) WB image

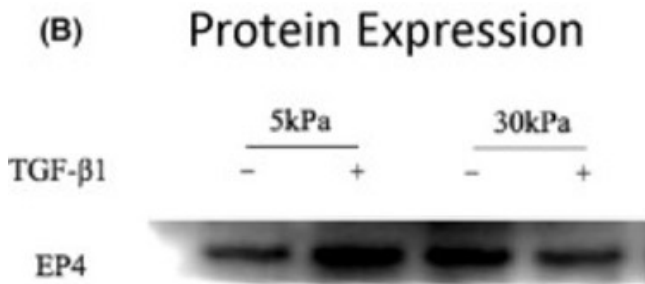
Western blot: Mouse retina stained with [ARG65693 anti-alpha Tubulin antibody](#) and ARG65351 Goat anti-Rabbit IgG antibody (HRP)

From Xiaoyuan Ye et al. Mol Ther Nucleic Acids. (2024), [doi: 10.1016/j.omtn.2024.102209](#), Fig. 5.D.



ARG65351 Goat anti-Rabbit IgG antibody (HRP) IHC-P image

From Yu-Qian Song et al. J Mol Med (Berl) (2022), [doi: 10.1007/s00109-021-02165-0](#), Fig. 5.c.



ARG65352 Donkey anti-Goat IgG antibody (HRP) WB image

Western blot: Endometrial Stromal cells stained with [ARG63922 anti-EP4 prostaglandin Receptor antibody](#) at 1:1000 dilution and ARG65352 Donkey anti-Goat IgG antibody (HRP).

From Qingqing Huang et al. Reprod Med Biol. (2021), [doi: 10.1002/rmb2.12423](#), Fig. 3.C.