

ARG30270 Loading Control Antibody Panel (Actin, beta Tubulin, Histone H3, GAPDH)

Package: 1 kit
Store at: -20°C

Component

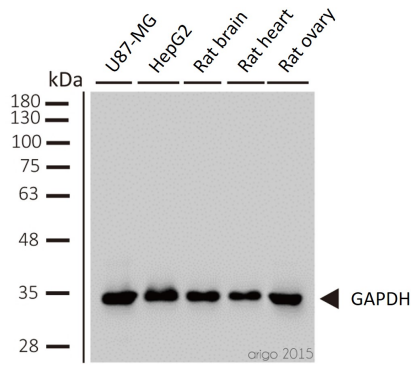
Cat. No.	Component Name	Host clonality	Reactivity	Application	Package
ARG65681	anti-Histone H3 antibody	Mouse mAb	Hu, Ms, Rat	ICC/IF, IHC-P, IP, WB	50 µg
ARG53987	anti-beta Actin antibody	Mouse mAb	Hu, Ms, Rat, Arabi, C. reinhardtii, Chk, Cucumber, Dm, Fsh, Goat, Hm, Mk, P. pastoris, Pig, Rb, Rice, S. cerevisiae, Yeast, Zfsh	WB	50 µl
ARG54082	anti-beta Tubulin antibody	Mouse mAb	Hu, Ms, Rat, Goat, Hm, Mk	ICC/IF, WB	50 µl
ARG10112	anti-GAPDH antibody [6C5]	Mouse mAb	AGMK, Bb, Cat, Chk, Dog, Fsh, Hm, Hu, Mk, Ms, Pig, Rb, Rat, Xenopus laevis, Zfsh	ELISA, ICC/IF, IHC-Fr, WB	50 µg
ARG65350	Goat anti-Mouse IgG antibody (HRP)	Goat pAb	Ms	ELISA, IHC-P, WB	50 µl

Summary

Product Description	<p>When Western Blot or other experiments are performed, loading controls are required to ensure that (1) the same amount of protein sample is loaded into each lane, (2) protein is transferred from the gel to membrane with equal efficiency across the whole membrane, and (3) antibody incubation and detection is uniform throughout the experimental procedure. Commonly used loading controls include GAPDH, Tubulins, Actin and Histone H3.</p> <p>GAPDH is a key enzyme in the glycolysis. Tubulins and actin are the major building block of microtubules and cytoskeleton. Histone 3 is one of the core proteins in the chromatin.</p>
Target Name	Loading Control
Alternate Names	Loading Control antibody; GAPDH antibody; beta Actin antibody; beta Tubulin antibody; Histone H3 antibody

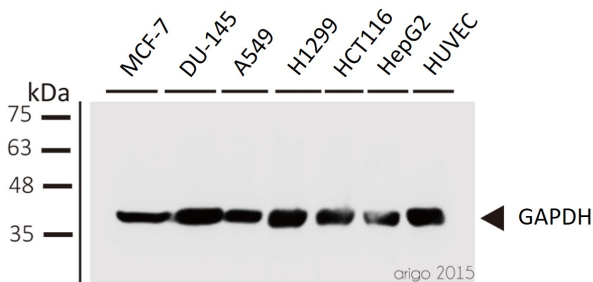
Properties

Storage instruction	For continuous use, store undiluted antibody at 2-8°C for up to a week. For long-term storage, aliquot and store at -20°C or below. Storage in frost free freezers is not recommended. Avoid repeated freeze/thaw cycles. Suggest spin the vial prior to opening. The antibody solution should be gently mixed before use.
Note	For laboratory research only, not for drug, diagnostic or other use.



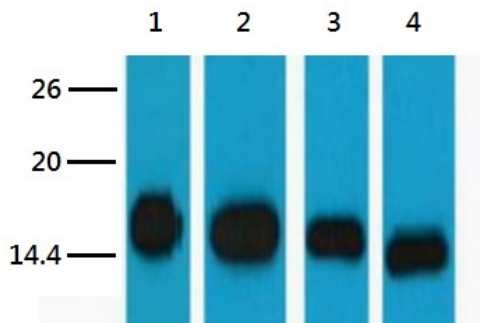
ARG10112 anti-GAPDH antibody [6C5] WB image

Western blot: 1) U87-MG 2) HepG2 3) rat brain 4) rat heart 5) rat ovary stained with ARG10112 anti-GAPDH antibody [6C5] at 1:2000 dilution.



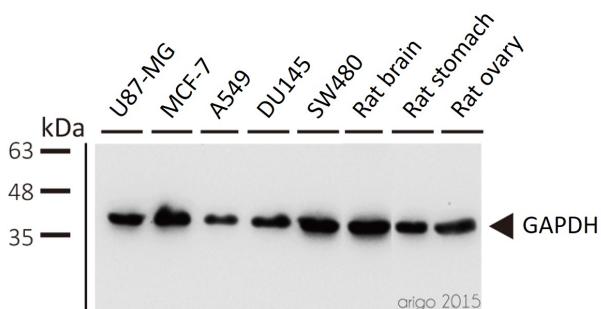
ARG10112 anti-GAPDH antibody [6C5] WB image

Western blot: 1) MCF-7 2) DU-145 3) A549 4) H1299 5) HCT116 6) HepG2 7) HUVEC stained with ARG10112 anti-GAPDH antibody [6C5] at 1:1000 dilution.



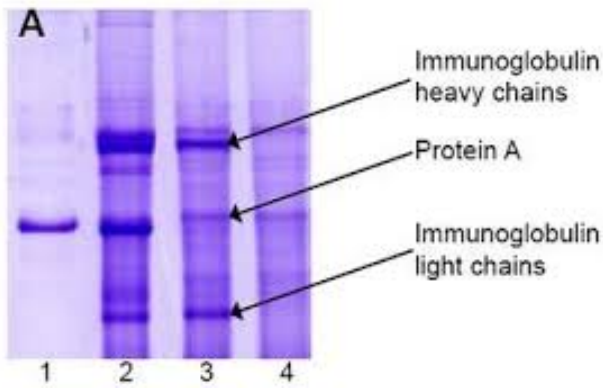
ARG65681 anti-Histone H3 antibody WB image

Western blot: 1) HeLa, 2) Raw, 3) Mouse brain tissue, and 4) Rat brain tissue lysates stained with ARG65681 anti-Histone H3 antibody at 1:5000 dilution.



ARG10112 anti-GAPDH antibody [6C5] WB image

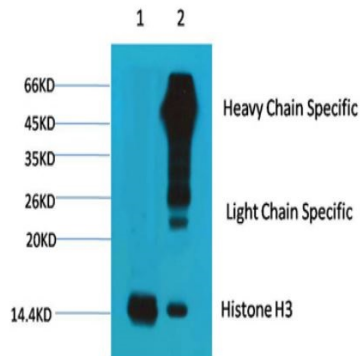
Western blot: 1) U87-MG 2) MCF-7 3) A549 4) DU145 5) SW480 6) rat brain 7) rat stomach 8) rat ovary stained with ARG10112 anti-GAPDH antibody [6C5] at 1:5000 dilution.



ARG10112 anti-GAPDH antibody [6C5] IP image

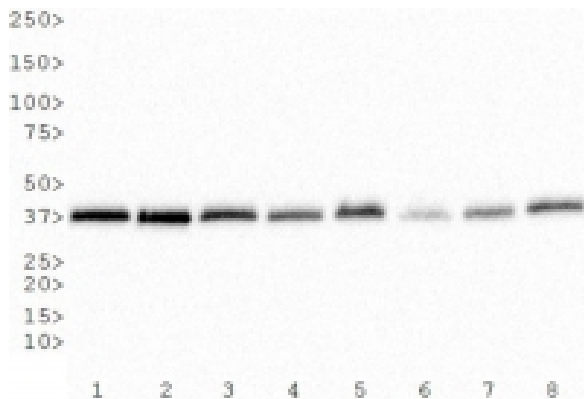
Immunoprecipitation and western blot: 1) GAPDH (1 µg). 2) GAPDH IP from rat heart tissue extract. 3) Only GAPDH preincubated with Protein A Sepharose. 4) Only Protein A Sepharose stained with ARG10112 GAPDH antibody [6C5].

Mixture of protein A-Sepharose with ARG10112 anti-GAPDH and tissue extract was incubated for 30 min at room temperature and precipitated by centrifugation. Pellet was washed with PBS, suspended in reducing electrophoresis sample buffer and heated for 5 minutes at 100°C. After centrifugation supernatant was loaded on gel and proteins were separated by SDS electrophoresis.



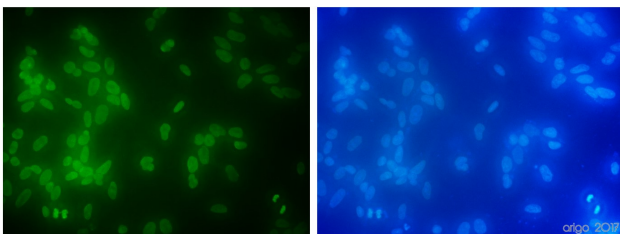
ARG65681 anti-Histone H3 antibody IP image

Immunoprecipitation: 1) HeLa cell lysate stained with ARG65681 anti-Histone H3 antibody and 2) IP product immunoprecipitated by ARG65681 anti-Histone H3 antibody at 1:200 dilution.



ARG10112 anti-GAPDH antibody [6C5] WB image

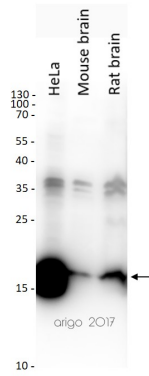
Western Blot: 1) HeLa, 2) NTERA-2, 3) A-431, 4) HepG2, 5) MCF-7, 6) NIH 3T3, 7) PC-12 and 8) COS-7 whole cell lysates stained with anti-GAPDH antibody [6C5] (ARG10112)



ARG65681 anti-Histone H3 antibody ICC/IF image

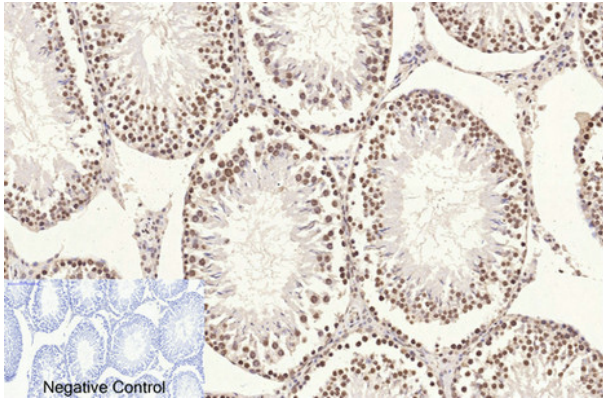
Immunofluorescence: 100% Methanol fixed (RT, 10 min) HeLa cells stained with ARG65681 anti-Histone H3 antibody at 1:100 dilution. Left: primary antibody (green). Right: Merge (primary antibody and DAPI).

Secondary antibody: ARG55393 Goat anti-Mouse IgG (H+L) antibody (FITC)



ARG65681 anti-Histone H3 antibody WB image

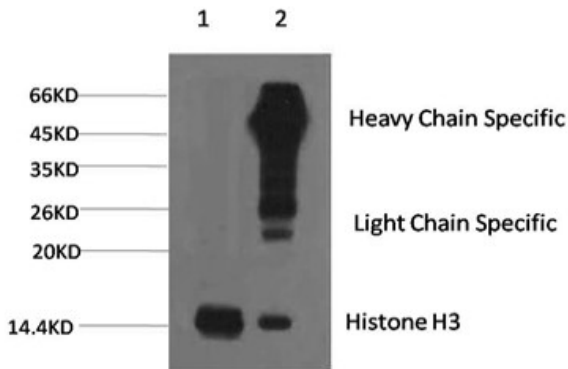
Western blot: 20 µg of HeLa, Mouse brain and Rat brain lysates stained with ARG65681 anti-Histone H3 antibody at 1:2000 dilution.



ARG65681 anti-Histone H3 antibody IHC-P image

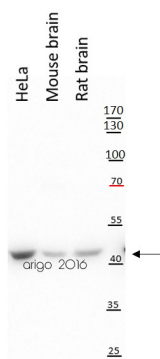
Immunohistochemistry: Paraffin-embedded Rat testis tissue stained with ARG65681 anti-Histone H3 antibody at 1:200 dilution (4°C, overnight). Antigen Retrieval: Boil tissue section in Sodium citrate buffer (pH 6.0) for 20 min. Secondary antibody was diluted at 1:200 (RT, 30 min).

Negative control was used by secondary antibody only.



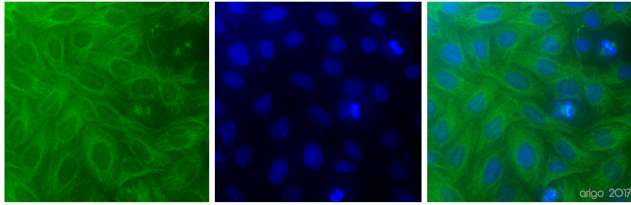
ARG65681 anti-Histone H3 antibody IP image

Immunoprecipitation: 1) HeLa cell lysate stained with ARG65681 anti-Histone H3 antibody and 2) IP product immunoprecipitated by ARG65681 anti-Histone H3 antibody at 1:200 dilution.



ARG53987 anti-beta Actin antibody WB image

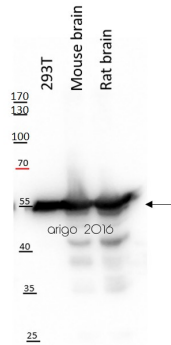
Western blot: 20 µg of HeLa, Mouse brain and Rat brain lysates stained with ARG53987 anti-beta Actin antibody at 1:10000 dilution.



ARG54082 anti-beta Tubulin antibody ICC/IF image

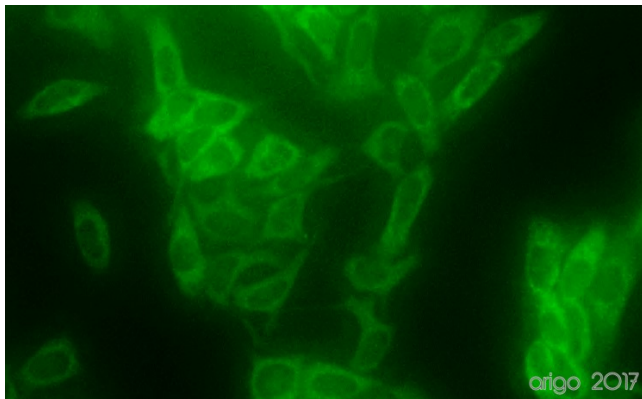
Immunofluorescence: 100% Methanol fixed (RT, 10 min) HeLa cells stained with ARG54082 anti-beta Tubulin antibody at 1:500 dilution. Left: primary antibody (green). Middle: DAPI (blue). Right: Merge.

Secondary antibody: [ARG55393](#) Goat anti-Mouse IgG (H+L) antibody (FITC)



ARG54082 anti-beta Tubulin antibody WB image

Western blot: 20 µg of 293T, Mouse brain and Rat brain lysates stained with ARG54082 anti-beta Tubulin antibody at 1:10000 dilution.



ARG10112 anti-GAPDH antibody [6C5] ICC/IF image

Immunofluorescence: 100% Methanol fixed (RT, 10 min) HeLa cells stained with ARG10112 anti-GAPDH antibody [6C5] (green) at 1:200 dilution.

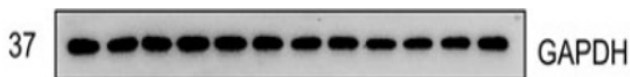
Secondary antibody: [ARG55393](#) Goat anti-Mouse IgG (H+L) antibody (FITC)



ARG10112 anti-GAPDH antibody [6C5] WB image

Western blot: Mouse samples stained with ARG10112 anti-GAPDH antibody [6C5] at 1:1000 dilution.

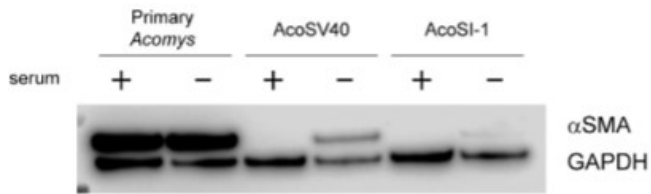
From Yun-Yun Li et al. *Int J Biol Sci* (2022), [doi: 10.7150/ijbs.68224](https://doi.org/10.7150/ijbs.68224), Fig. 5. C.



ARG10112 anti-GAPDH antibody [6C5] WB image

Western blot: Porcine kidney stained with ARG10112 anti-GAPDH antibody [6C5].

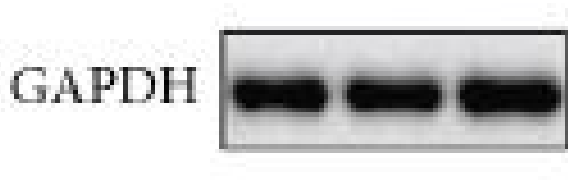
From Gianni Huang et al. *Front Cell Dev Biol* (2022), [doi: 10.3389/fcell.2022.899869](https://doi.org/10.3389/fcell.2022.899869), Fig. 2. E.



ARG10112 anti-GAPDH antibody [6C5] WB image

Western blot: pAFs, AcoSV40, and AcoSI-1 stained with ARG10112 anti-GAPDH antibody [6C5] at 1:5000 dilution.

From Michele N Dill et al. PLoS One. (2023), [doi: 10.3389/fcell.2022.899869](https://doi.org/10.3389/fcell.2022.899869), Fig. 2. C.

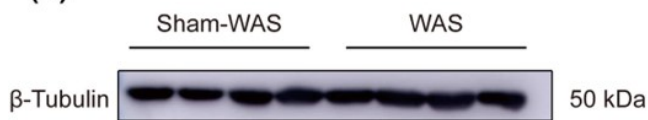


ARG10112 anti-GAPDH antibody [6C5] WB image

Western blot: HUVEC stained with ARG10112 anti-GAPDH antibody [6C5].

From Bingzheng Lu et al. Oxid Med Cell Longev (2020), [doi: 10.1155/2020/2048210](https://doi.org/10.1155/2020/2048210), Fig. 5. B.

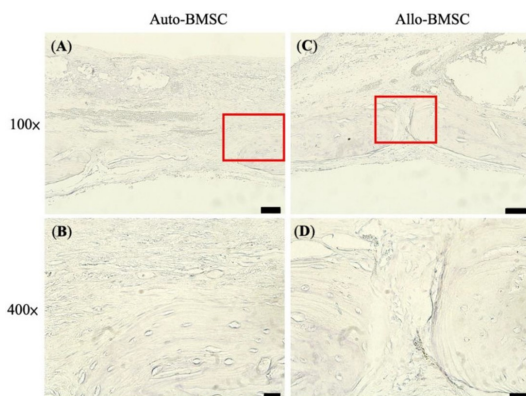
(D)



ARG65350 Goat anti-Mouse IgG antibody (HRP) WB image

Western blot: Rat basolateral amygdala stained with [ARG62347 anti-beta Tubulin antibody \[BT7R\]](https://doi.org/10.3389/fcell.2022.899869) at 1:1000 dilution, ARG65350 Goat anti-Mouse IgG antibody (HRP) at 1:5000 dilution.

From Guang-Bing Duan et al. CNS Neurosci Ther. (2024), [doi: 10.1111/cns.14611](https://doi.org/10.1111/cns.14611), Fig. 4.D.



ARG65350 Goat anti-Mouse IgG antibody (HRP) IHC-P image

From Cheng-Feng Chu et al. J Pers Med. (2021), [doi: 10.3390/jpm11121326](https://doi.org/10.3390/jpm11121326), Fig. 6.