

## ARG30293 Smooth Muscle Marker

Package: 1 pair  
Store at: -20°C

### Component

Cat. No.	Component Name	Host clonality	Reactivity	Application	Package
ARG63416	anti-SM22 alpha / Transgelin antibody	Goat pAb	Hu	IHC-P, WB	50 µg
ARG52485	anti-alpha smooth muscle Actin antibody [1A4]	Mouse mAb	Hu, Ms, Pig, Rb, Rat, Sheep	ELISA, ICC/IF, IHC-P, IHC-Fr, WB	50 µl

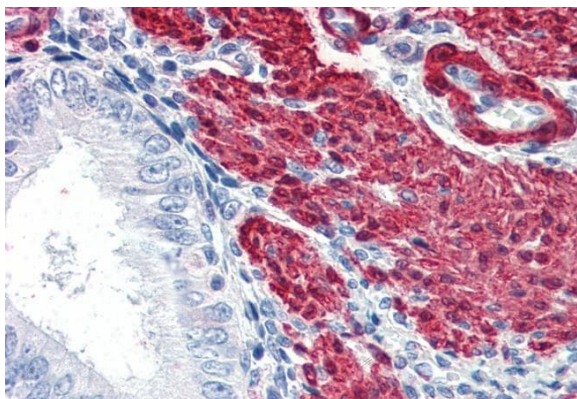
### Summary

Target Name	Smooth Muscle Marker
Alternate Names	Smooth Muscle Marker; alpha smooth muscle Actin antibody; SM22 alpha / Transgelin antibody

### Properties

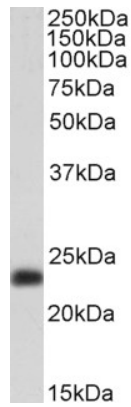
Storage instruction	For continuous use, store undiluted antibody at 2-8°C for up to a week. For long-term storage, aliquot and store at -20°C or below. Storage in frost free freezers is not recommended. Avoid repeated freeze/thaw cycles. Suggest spin the vial prior to opening. The antibody solution should be gently mixed before use.
Note	For laboratory research only, not for drug, diagnostic or other use.

### Images



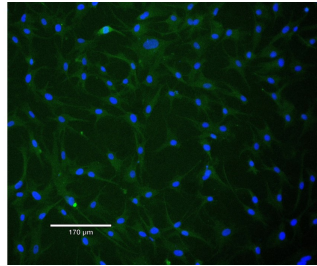
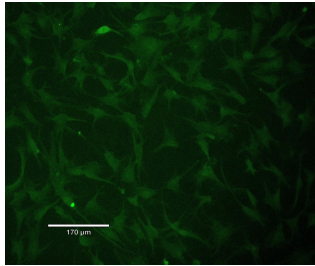
ARG63416 anti-SM22 alpha / Transgelin antibody IHC-P image

Immunohistochemistry: Paraffin-embedded Human uterus tissue. Antigen Retrieval: Steam tissue section in Citrate buffer (pH 6.0). The tissue section was stained with ARG63416 anti-SM22 alpha / Transgelin antibody at 5 µg/ml dilution followed by AP-staining.



ARG63416 anti-SM22 alpha / Transgelin antibody WB image

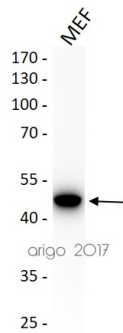
Western blot: 35 µg of Human testis lysate (in RIPA buffer) stained with ARG63416 anti-SM22 alpha / Transgelin antibody at 0.3 µg/ml dilution and incubated at RT for 1 hour.



ARG52485 anti-alpha smooth muscle Actin antibody [1A4] ICC/IF image

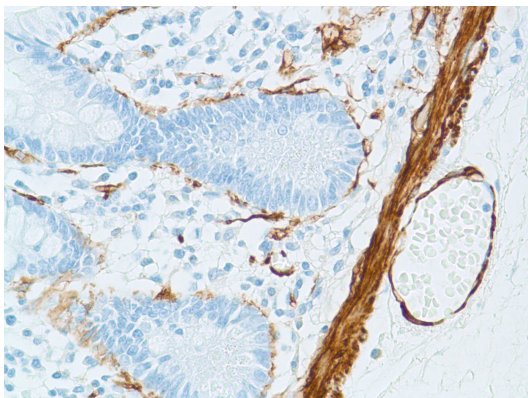
Immunofluorescence: Rabbit skeletal muscle stained with ARG52485 anti-alpha smooth muscle Actin antibody [1A4] at 1:100 dilution.

Secondary antibody: [ARG23757 Goat anti-Mouse IgG \(H+L\) antibody \(FITC\), pre-adsorbed](#)



ARG52485 anti-alpha smooth muscle Actin antibody [1A4] WB image

Western blot: 30 µg of MEF cell lysate stained with anti-alpha smooth muscle Actin antibody [1A4] at 1:200 dilution.



ARG52485 anti-Actin-Smooth Muscle antibody [1A4] IHC-P image

Immunohistochemistry: Human Small Intestine stained with Actin-Smooth Muscle antibody [1A4] (ARG52485)