

ARG30308 Immature B Cell Marker Antibody Panel (CD19, CD20, CD22, IgM Fc) (FACS)

Package: 1 kit
Store at: -20°C

Component

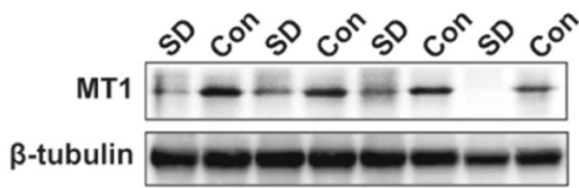
Cat. No.	Component Name	Host clonality	Reactivity	Application	Package
ARG23128	anti-CD19 antibody [LE-CD19]	Mouse mAb	Hu	ELISA, FACS, IHC-P, IP, WB	50 µg
ARG62775	anti-CD22 antibody [MEM-01]	Mouse mAb	Hu, NHuPrm	FACS, IP, WB	50 µg
ARG62767	anti-CD20 antibody [MEM-97]	Mouse mAb	Hu, Bov, Pig	FACS, IP	50 µg
ARG63040	Mouse anti-Human IgM (Fc) antibody [CH2]	Mouse mAb	Hu	ELISA, FACS, ICC/IF, WB	50 µg
ARG65350	Goat anti-Mouse IgG antibody (HRP)	Goat pAb	Ms	ELISA, IHC-P, WB	50 µl
ARG65351	Goat anti-Rabbit IgG antibody (HRP)	Goat pAb	Rb	ELISA, IHC-P, WB	50 µl

Summary

Product Description	<p>B cell development occurs in the bone marrow and peripheral lymphoid tissues such as spleen. In the bone marrow, pro B Cell, pre B Cell and Immature B Cell develop. During this differentiation, several stages of rearrangement occur at immunoglobulin locus, resulting in the generation and surface expression of different types of receptors, such as pre-B-cell receptor. Different markers are also expressed at the surface of these cells throughout the development of B cell.</p> <p>Immature B Cells express IgM, CD19, CD20 and CD22 on the surface of the cells.</p> <p>Arigo has these marker antibodies in the application of Flow Cytometry for the convenience of identifying Immature B Cells in B cell populations.</p> <p>Cambier et al. Nature Rev Immunology 7: 633-643 (2007) Alberts et al. Molecular Biology of the Cell: 1367 Parham. The Immune System</p>
Target Name	Immature B Cell Marker
Alternate Names	Immature B Cell Marker antibody; CD19 antibody; CD20 antibody; CD22 antibody

Properties

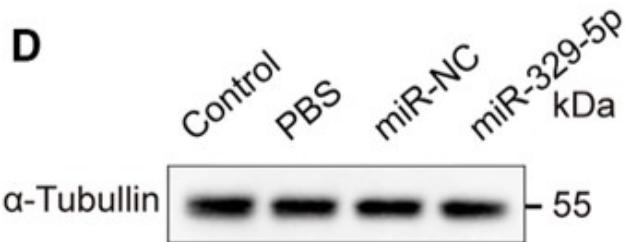
Storage instruction	For continuous use, store undiluted antibody at 2-8°C for up to a week. For long-term storage, aliquot and store at -20°C or below. Storage in frost free freezers is not recommended. Avoid repeated freeze/thaw cycles. Suggest spin the vial prior to opening. The antibody solution should be gently mixed before use.
Note	For laboratory research only, not for drug, diagnostic or other use.



ARG65351 Goat anti-Rabbit IgG antibody (HRP) WB image

Western blot: Rat placental stained with [ARG57589 anti-MTNR1A antibody](#) at 1:1000 dilution, ARG65351 Goat anti-Rabbit IgG antibody (HRP) at 1:5000 dilution.

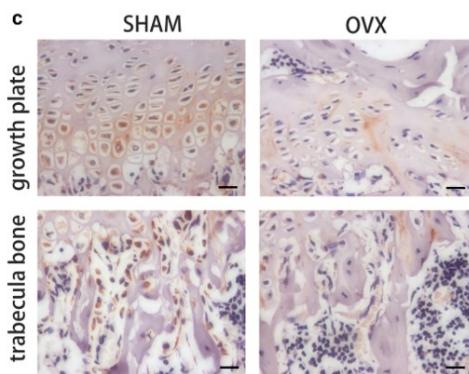
From Jinzhi Li et al. J Reprod Immunol. (2023), [doi: 10.1016/j.jri.2023.104166](#), Fig. 2.B.



ARG65351 Goat anti-Rabbit IgG antibody (HRP) WB image

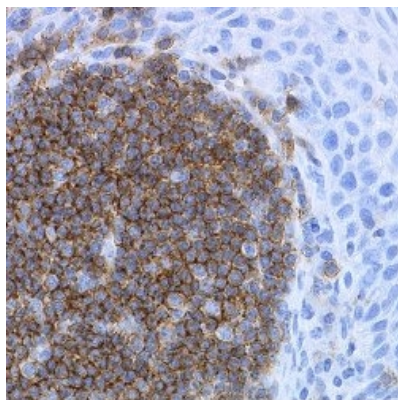
Western blot: Mouse retina stained with [ARG65693 anti-alpha Tubulin antibody](#) and ARG65351 Goat anti-Rabbit IgG antibody (HRP)

From Xiaoyuan Ye et al. Mol Ther Nucleic Acids. (2024), [doi: 10.1016/j.omtn.2024.102209](#), Fig. 5.D.



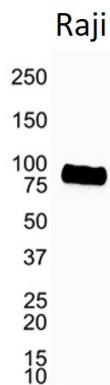
ARG65351 Goat anti-Rabbit IgG antibody (HRP) IHC-P image

From Yu-Qian Song et al. J Mol Med (Berl) (2022), [doi: 10.1007/s00109-021-02165-0](#), Fig. 5.c.



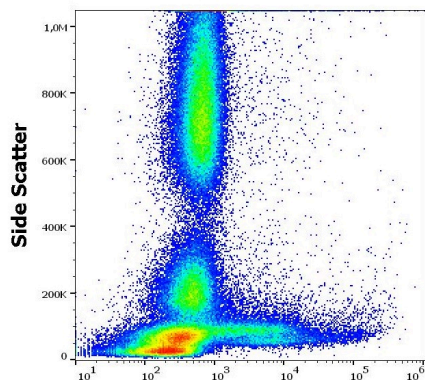
ARG23128 anti-CD19 antibody [LE-CD19] IHC-P image

Immunohistochemistry: Formalin-fixed and paraffin-embedded Human tonsil stained with ARG23128 anti-CD19 antibody [LE-CD19].



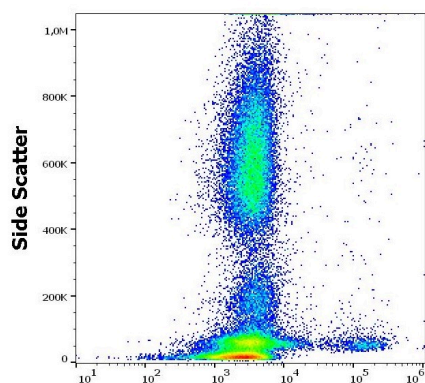
ARG23128 anti-CD19 antibody [LE-CD19] WB image

Western blot: Raji Human Lymphoblastic Burkitt's Lymphoma whole cell lysate stained with ARG23128 anti-CD19 antibody [LE-CD19].



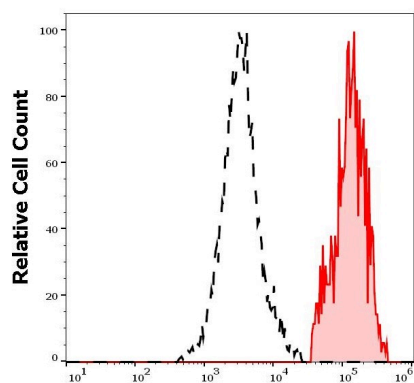
ARG63040 Mouse anti-Human IgM (Fc) antibody [CH2] FACS image

Flow Cytometry: Human peripheral whole blood stained with ARG63040 Mouse anti-Human IgM (Fc) antibody [CH2] at 4 µg/ml dilution, followed by APC-conjugated Goat anti-Mouse antibody.



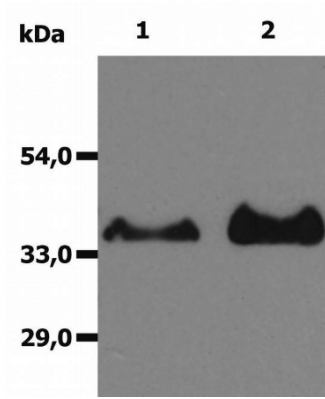
ARG62775 anti-CD22 antibody [MEM-01] FACS image

Flow Cytometry: Human peripheral whole blood stained with ARG62775 anti-CD22 antibody [MEM-01] at 0.6 µg/ml dilution, followed by APC-conjugated Goat anti-Mouse antibody.



ARG62775 anti-CD22 antibody [MEM-01] FACS image

Flow Cytometry: Separation of human CD22 positive lymphocytes (red-filled) from human CD22 negative lymphocytes (black-dashed). Human peripheral whole blood stained with ARG62775 anti-CD22 antibody [MEM-01] at 0.6 µg/ml dilution, followed by APC-conjugated Goat anti-Mouse antibody.

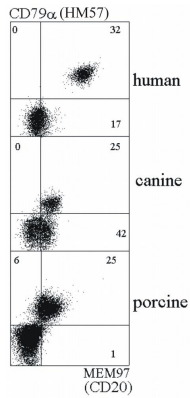


ARG62767 anti-CD20 antibody [MEM-97] IP image

Immunoprecipitation: Immunoprecipitation of human CD20 from the whole cell lysate of Raji cells.

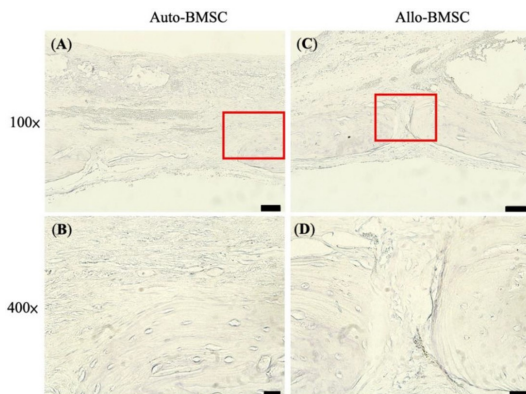
1) original lysate of Raji cells, and 2) same cells immunoprecipitate by ARG62767 anti-CD20 antibody [MEM-97].

Western blot was stained with anti-CD20 rabbit polyclonal antibody.



ARG62767 anti-CD20 antibody [MEM-97] FACS image

Flow Cytometry: Human, canine and porcine B lymphocytes double stained with ARG62767 anti-CD20 antibody [MEM-97] and anti-CD79a antibody [HM57].



ARG65350 Goat anti-Mouse IgG antibody (HRP) IHC-P image

From Cheng-Feng Chu et al. J Pers Med. (2021), [doi: 10.3390/jpm11121326](https://doi.org/10.3390/jpm11121326), Fig. 6.