

ARG30321 Autophagy Antibody Panel

Package: 1 kit
Store at: -20°C

Component

Cat. No.	Component Name	Host clonality	Reactivity	Application	Package
ARG55799	anti-LC3B antibody	Rabbit pAb	Hu, Ms, Rat	ICC/IF, IHC-P, WB	20 µl
ARG55040	anti-SQSTM1 / p62 antibody	Rabbit pAb	Hu, Ms, Rat	ICC/IF, IHC-P, WB	20 µl
ARG58688	anti-Beclin 1 antibody	Rabbit pAb	Hu, Ms, Rat	ICC/IF, IHC-P, WB	20 µl
ARG66330	anti-GAPDH antibody [SQab1878]	Rabbit mAb	Hu, Ms, Rat, AGMK, Bov, Chk, Pig, Xenopus laevis, Zfsh	FACS, ICC/IF, IHC-P, IP, WB	20 µl
ARG65351	Goat anti-Rabbit IgG antibody (HRP)	Goat pAb	Rb	ELISA, IHC-P, WB	50 µl

Summary

Product Description Autophagy Antibody Panel is an all-in-one solution to make autophagy research easy and economic. This antibody panel comprises antibodies against autophagy markers LC3B and SQSTM1 and antibody against the key regulator Beclin-1. It is ideal for not only autophagy detection but also investigation of autophagy regulation. Moreover, the most suitable loading control GAPDH antibody and the compatible secondary antibody are included in this panel. All the antibodies in this panel have excellent performance for multiple applications on multiple species.

Related news:

[Keap1-Nrf2-ARE antibody panel is launched](#)

[New Autophagy antibody panel is released](#)

[Therapeutic strategies against PDAC](#)

Target Name

Autophagy

Alternate Names

Autophagy antibody; SQSTM1 / p62 antibody; LC3B antibody; Beclin 1 antibody; GAPDH antibody

Properties

Storage instruction

For continuous use, store undiluted antibody at 2-8°C for up to a week. For long-term storage, aliquot and store at -20°C or below. Storage in frost free freezers is not recommended. Avoid repeated freeze/thaw cycles. Suggest spin the vial prior to opening. The antibody solution should be gently mixed before use.

Note

For laboratory research only, not for drug, diagnostic or other use.

Bioinformation

Gene Full Name

Antibody Panel for Autophagy

Highlight

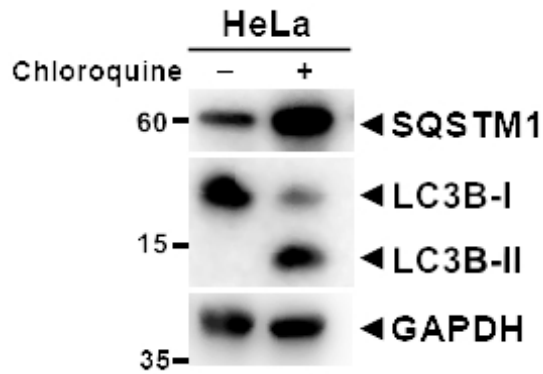
Related news:

[Examining RSL3-induced activation of Keap1-Nrf2-ARE pathway:](#)

Related products:

[Autophagy antibodies](#); [Autophagy Duos / Panels](#);

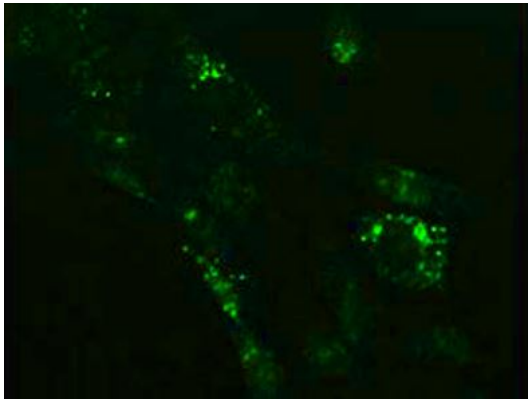
Images



ARG55799 anti-LC3B antibody WB image (Customer's Feedback)

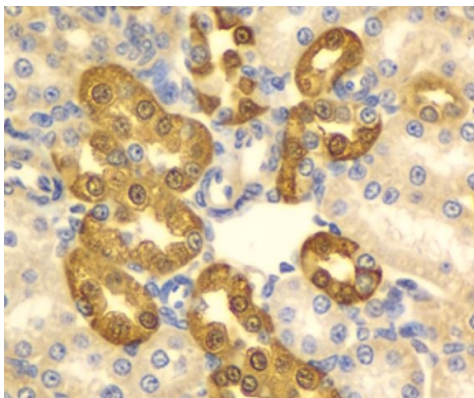
Western blot: HeLa cells untreated or treated with Chloroquine. 20 μ g of cell lysates stained with [ARG55040](#) anti-SQSTM1 / p62 antibody and ARG55799 anti-LC3B antibody at 1:1000 dilution.

An anti-GAPDH antibody used as a positive control.



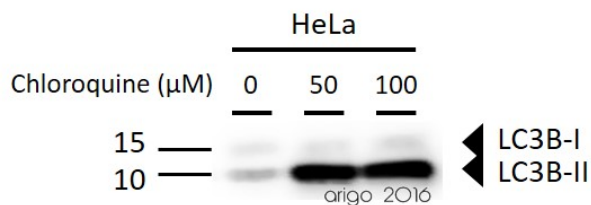
ARG55799 anti-LC3B antibody ICC/IF image

Immunofluorescence: NIH/3T3 cells treated with Chloroquine (50 μ M, 37°C for 20 hours). Cells were stained with ARG55799 anti-LC3B antibody at 1:100 dilution.



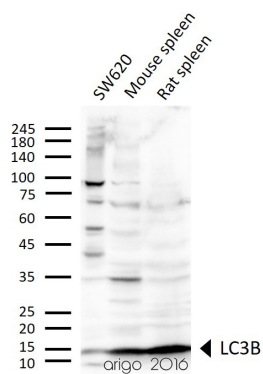
ARG55799 anti-LC3B antibody IHC-P image

Immunohistochemistry: Paraffin-embedded Rat kidney stained with ARG55799 anti-LC3B antibody at 1:100 dilution.



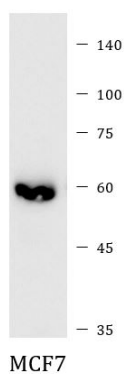
ARG55799 anti-LC3B antibody WB image

Western blot: 30 μg of HeLa untreated or treated with Chloroquine at 50 μM, 100 μM (18 hr). The bolts stained with ARG55799 anti-LC3B antibody at 1:1000 dilution.



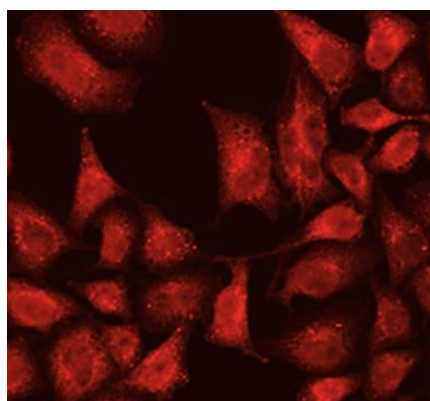
ARG55799 anti-LC3B antibody WB image

Western blot: 30 μg of SW620, Mouse spleen, and Rat spleen lysates stained with ARG55799 anti-LC3B antibody at 1:1000 dilution.



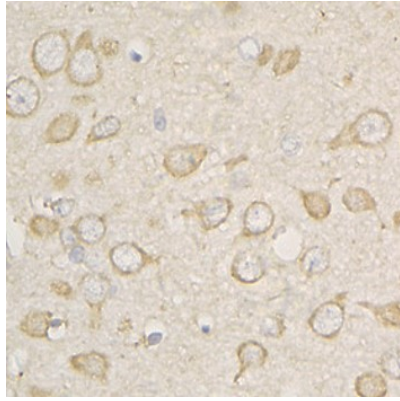
ARG55040 anti-SQSTM1 / p62 antibody WB image

Western blot: 20 μg of MCF7 cell lysate stained with ARG55040 anti-SQSTM1 / p62 antibody at 1:1000 dilution.



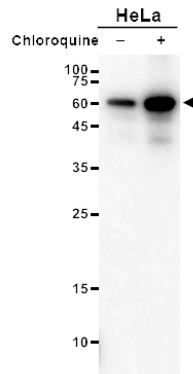
ARG55040 anti-SQSTM1 / p62 antibody ICC/IF image

Immunofluorescence: U2OS cells stained with ARG55040 anti-SQSTM1 / p62 antibody at 1:100 dilution.



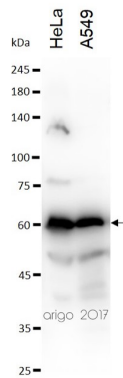
ARG55040 anti-SQSTM1 / p62 antibody IHC-P image

Immunohistochemistry: Paraffin-embedded Rat brain stained with ARG55040 anti-SQSTM1 / p62 antibody at 1:100 dilution.



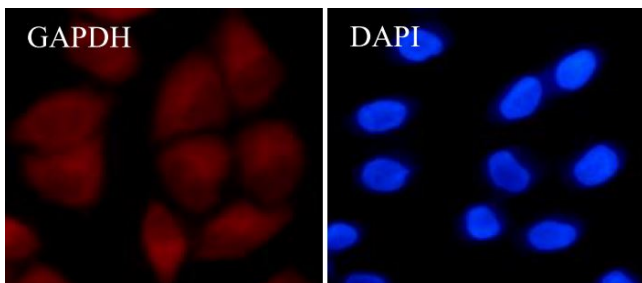
ARG55040 anti-SQSTM1 / p62 antibody WB image

Western blot: HeLa cells untreated or treated with Chloroquine. 20 µg of cell lysates stained with ARG55040 anti-SQSTM1 / p62 antibody at 1:1000 dilution.



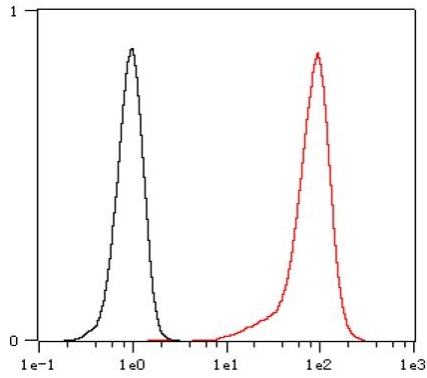
ARG55040 anti-SQSTM1 / p62 antibody WB image

Western blot: 30 µg of HeLa and A549 cell lysates stained with ARG55040 anti-SQSTM1 / p62 antibody at 1:500 dilution.



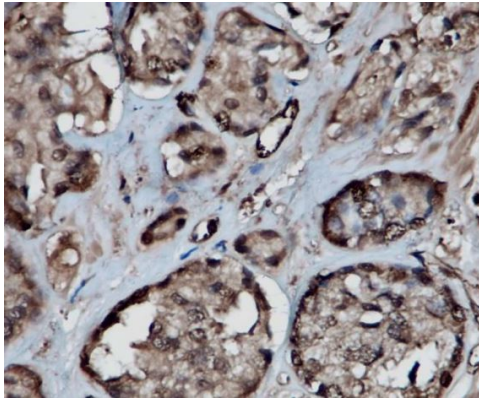
ARG66330 anti-GAPDH antibody [SQab1878] ICC/IF image

Immunofluorescence: HeLa cells were fixed with 4% paraformaldehyde for 30 min at RT, permeabilized with 0.1% Triton X-100 for 10 min at RT then blocked with 10% goat serum for 30 min at RT. Cells were stained with ARG66330 anti-GAPDH antibody [SQab1878] (red) at 4°C. DAPI (blue) was used as the nuclear counter stain.



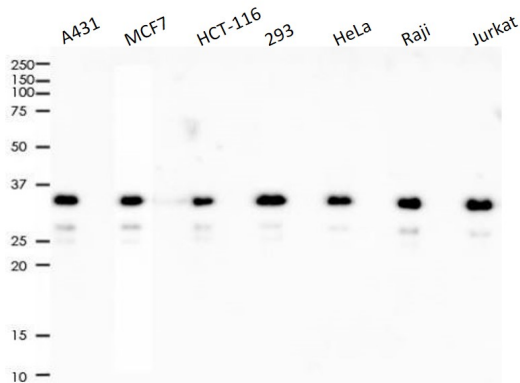
ARG66330 anti-GAPDH antibody [SQab1878] FACS image

Flow Cytometry: HeLa cells were fixed with 4% paraformaldehyde (10 min) and then permeabilized with 0.1% TritonX-100 for 15 min. They were stained with ARG66330 anti-GAPDH antibody [SQab1878] (red) in 1x PBS/1% BSA for 30 min at RT, followed by Alexa Fluor® 488 labelled secondary antibody. Unlabelled sample (black) was used as a control.



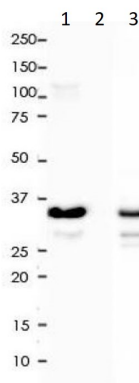
ARG66330 anti-GAPDH antibody [SQab1878] IHC-P image

Immunohistochemistry: Formalin-fixed and paraffin-embedded prostate cancer tissue stained with ARG66330 anti-GAPDH antibody [SQab1878]. Antigen Retrieval: Heat mediated was performed using Tris/EDTA buffer pH 9.0.



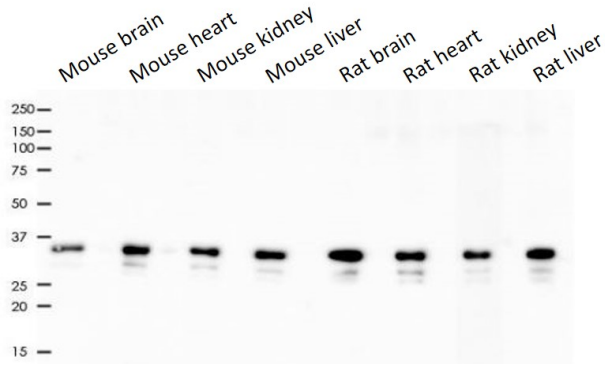
ARG66330 anti-GAPDH antibody [SQab1878] WB image

Western blot: 2 µg of A431, MCF7, HCT-116, 293, HeLa, Raji and Jurkat cell lysates stained with ARG66330 anti-GAPDH antibody [SQab1878].



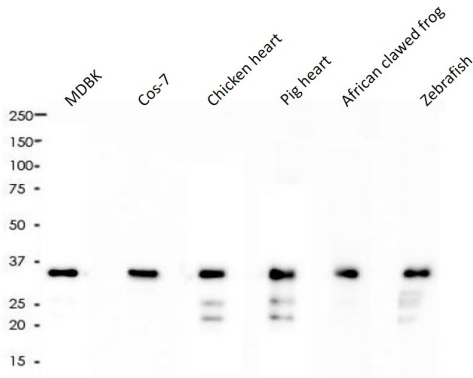
ARG66330 anti-GAPDH antibody [SQab1878] IP image

Immunoprecipitation: 0.1 mg of HeLa whole cell lysate immunoprecipitated and stained with ARG66330 anti-GAPDH antibody [SQab1878]. 1) ARG66330 IP in HeLa whole cell lysate, 2) PBS instead of ARG66330 in HeLa whole cell lysate, and 3) HeLa whole cell lysate, 2 µg (input).



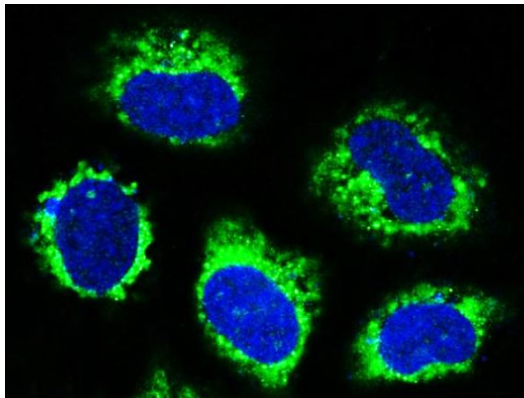
ARG66330 anti-GAPDH antibody [SQab1878] WB image

Western blot: 2 µg of Mouse brain, Mouse heart, Mouse kidney, Mouse liver, Rat brain, Rat heart, Rat kidney and Rat liver lysates stained with ARG66330 anti-GAPDH antibody [SQab1878].



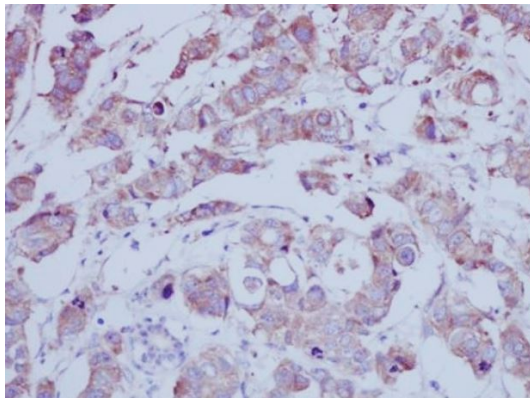
ARG66330 anti-GAPDH antibody [SQab1878] WB image

Western blot: 2 µg of MDBK, Cos-7, Chicken heart, Pig heart, African clawed frog and Zebrafish lysates stained with ARG66330 anti-GAPDH antibody [SQab1878].



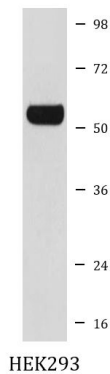
ARG58688 anti-Beclin 1 antibody ICC/IF image

Immunofluorescence: HeLa cells stained with ARG58688 anti-Beclin 1 antibody (green). Nuclear staining (blue).



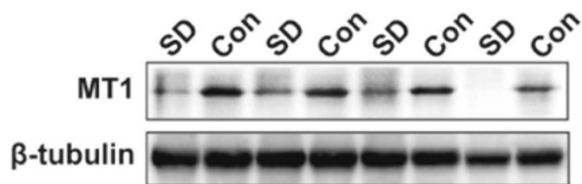
ARG58688 anti-Beclin 1 antibody IHC-P image

Immunohistochemistry: Paraffin-embedded Human breast cancer tissue stained with ARG58688 anti-Beclin 1 antibody.



ARG58688 anti-Beclin 1 antibody WB image

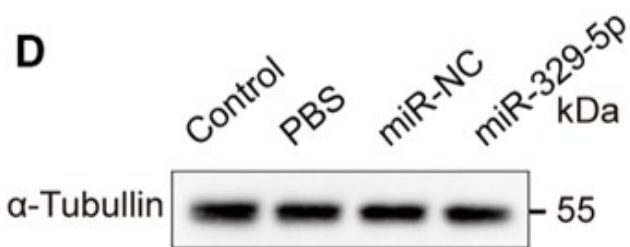
Western blot: HEK293 cell lysate stained with ARG58688 anti-Beclin 1 antibody.



ARG65351 Goat anti-Rabbit IgG antibody (HRP) WB image

Western blot: Rat placental stained with [ARG57589 anti-MTNR1A antibody](#) at 1:1000 dilution, ARG65351 Goat anti-Rabbit IgG antibody (HRP) at 1:5000 dilution.

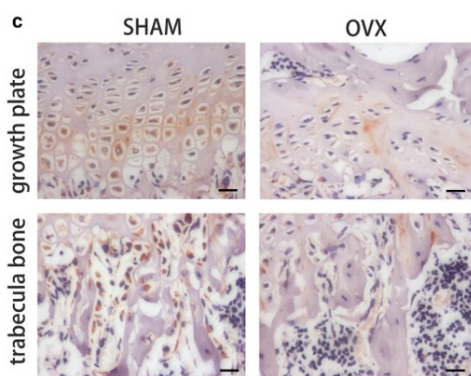
From Jinzhi Li et al. J Reprod Immunol. (2023), [doi: 10.1016/j.jri.2023.104166](#), Fig. 2.B.



ARG65351 Goat anti-Rabbit IgG antibody (HRP) WB image

Western blot: Mouse retina stained with [ARG65693 anti-alpha Tubulin antibody](#) and ARG65351 Goat anti-Rabbit IgG antibody (HRP)

From Xiaoyuan Ye et al. Mol Ther Nucleic Acids. (2024), [doi: 10.1016/j.omtn.2024.102209](#), Fig. 5.D.



ARG65351 Goat anti-Rabbit IgG antibody (HRP) IHC-P image

From Yu-Qian Song et al. J Mol Med (Berl) (2022), [doi: 10.1007/s00109-021-02165-0](#), Fig. 5.c.