

ARG30341 Heterochromatin Foci Antibody Duo

Package: 1 pair
Store at: -20°C

Component

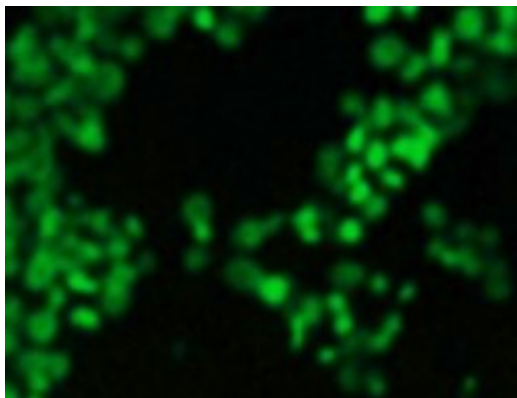
Cat. No.	Component Name	Host clonality	Reactivity	Application	Package
ARG54763	anti-Histone H3 dimethyl (Lys9) antibody - ChIP-Grade	Rabbit pAb	Hu, Ms, Rat	ChIP, ChIP-seq, ICC/IF, IHC-P, WB	50 µl
ARG53997	anti-CBX3 / HP1 gamma antibody	Mouse mAb	Hu, Ms, Rat, Hm, Mk	ICC/IF, IHC-P, IP, WB	50 µl

Summary

Product Description	<p>Senescence-associated heterochromatin foci (SAHF) are specialized domains of facultative heterochromatin that play a role in sequestering proliferation-promoting genes. Detection of SAHF components is useful for identifying senescent cells.</p> <p>This antibody duo comprises H3K9Me2 and HP1 gamma antibodies for labeling heterochromatin. It is the best solution to detect SAHF in human, mouse, and rat samples.</p>
Target Name	Heterochromatin Foci

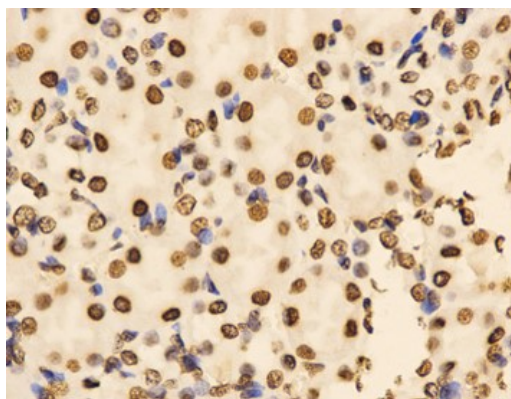
Properties

Storage instruction	For continuous use, store undiluted antibody at 2-8°C for up to a week. For long-term storage, aliquot and store at -20°C or below. Storage in frost free freezers is not recommended. Avoid repeated freeze/thaw cycles. Suggest spin the vial prior to opening. The antibody solution should be gently mixed before use.
Note	For laboratory research only, not for drug, diagnostic or other use.



ARG54763 anti-Histone H3 dimethyl (Lys9) antibody - ChIP-Grade ICC/IF image

Immunofluorescence: 293T cells stained with ARG54763 anti-Histone H3 dimethyl (Lys9) antibody - ChIP-Grade.



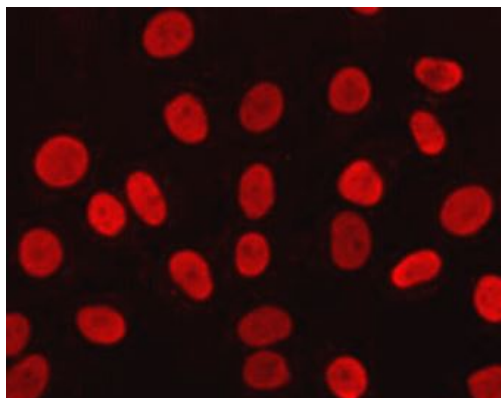
ARG54763 anti-Histone H3 dimethyl (Lys9) antibody - ChIP-Grade IHC-P image

Immunohistochemistry: Paraffin-embedded Mouse kidney tissue stained with ARG54763 anti-Histone H3 dimethyl (Lys9) antibody (ChIP-Grade) at 1:200 dilution.



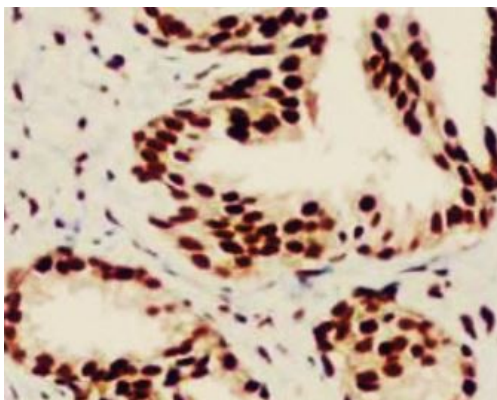
ARG54763 anti-Histone H3 dimethyl (Lys9) antibody - ChIP-Grade WB image

Western blot: HeLa cell lysate and Recombinant Histone H3 protein expressed in *E. coli* (negative control) stained with ARG54763 anti-Histone H3 dimethyl (Lys9) antibody (ChIP-Grade).



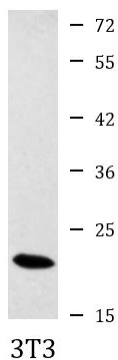
ARG53997 anti-CBX3 / HP1 gamma antibody ICC/IF image

Immunofluorescence: HeLa cells fixed with 4% Paraformaldehyde and stained with ARG53997 anti-CBX3 / HP1 gamma antibody at 1:200 dilution.



ARG53997 anti-CBX3 / HP1 gamma antibody IHC-P image

Immunohistochemistry: Paraffin-embedded prostate cancer tissue stained with ARG53997 anti-CBX3 / HP1 gamma antibody at 1:200 dilution. Antigen Retrieval: Boil tissue section in Citrate buffer (pH 6.0).



ARG53997 anti-CBX3 / HP1 gamma antibody WB image

Western blot: 3T3 cell lysate stained with ARG53997 anti-CBX3 / HP1 gamma antibody at 1:1000 dilution.



ARG53997 anti-CBX3 / HP1 gamma antibody IP image

Immunoprecipitation: HeLa cell lysates were immunoprecipitated and stained with ARG53997 anti-CBX3 / HP1 gamma antibody.