

ARG30345 Keap1-Nrf2-ARE Antibody Panel

Package: 1 kit
Store at: -20°C

Component

Cat. No.	Component Name	Host clonality	Reactivity	Application	Package
ARG40635	anti-Nrf 2 antibody	Rabbit pAb	Hu, Ms	ICC/IF, IHC-P, IP, WB	20 µl
ARG43340	anti-NQO1 antibody	Rabbit pAb	Hu, Ms, Rat	FACS, ICC/IF, IP, WB	20 µl
ARG43341	anti-Heme Oxygenase 1 antibody	Rabbit pAb	Hu, Ms, Rat	ICC/IF, IHC-P, IP, WB	20 µl
ARG66711	anti-KEAP1 antibody	Rabbit pAb	Hu, Ms, Rat	IHC-P, WB	20 µg

Summary

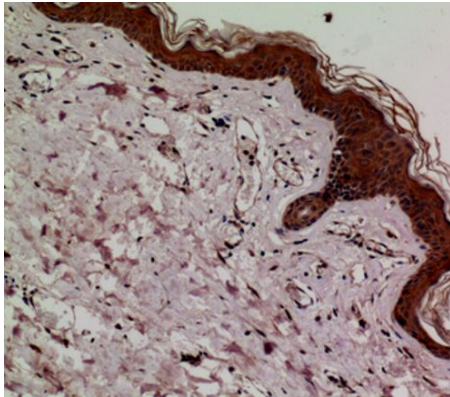
Product Description	This antibody panel comprises Nrf2 antibody as well as Nrf2 regulator Keap1 and antioxidant enzymes NQO1 and HO-1 antibodies. It is the best solution to facilitate the research of Keap1-Nrf2-ARE pathway.
Target Name	Keap1-Nrf2-ARE

Properties

Storage instruction	For continuous use, store undiluted antibody at 2-8°C for up to a week. For long-term storage, aliquot and store at -20°C or below. Storage in frost free freezers is not recommended. Avoid repeated freeze/thaw cycles. Suggest spin the vial prior to opening. The antibody solution should be gently mixed before use.
Note	For laboratory research only, not for drug, diagnostic or other use.

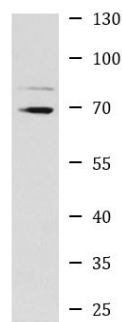
Bioinformation

Highlight	Related News: Examining RSL3-induced activation of Keap1-Nrf2-ARE pathway; Keap1-Nrf2-ARE antibody panel is launched; Related products: KEAP1 antibodies; KEAP1 Duos / Panels; Nrf 2 antibodies; Nrf 2 Duos / Panels;
-----------	--



ARG66711 anti-KEAP1 antibody IHC-P image

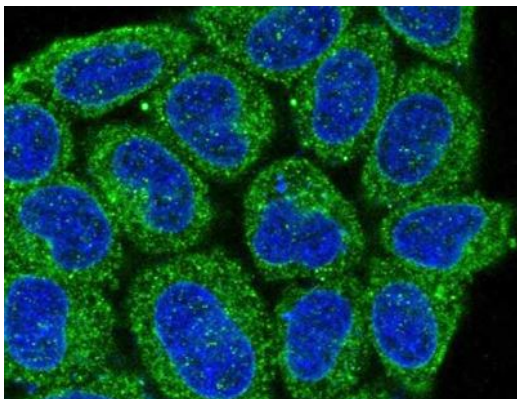
Immunohistochemistry: Paraffin-embedded Human skin tissue stained with ARG66711 anti-KEAP1 antibody at 1:100 dilution.



K562

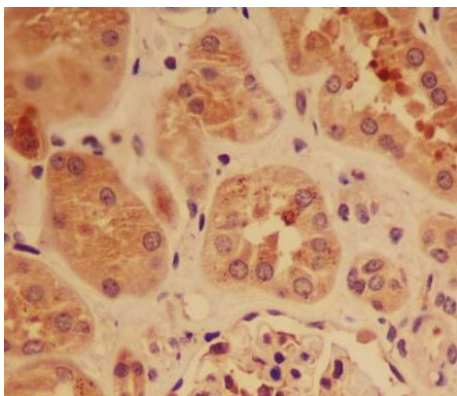
ARG66711 anti-KEAP1 antibody WB image

Western blot: K562 cell lysate stained with ARG66711 anti-KEAP1 antibody at 1:1000 dilution.



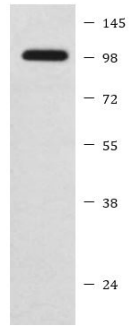
ARG40635 anti-Nrf 2 antibody ICC/IF image

Immunofluorescence: HeLa cells stained with ARG40635 anti-Nrf 2 antibody.



ARG40635 anti-Nrf 2 antibody IHC-P image

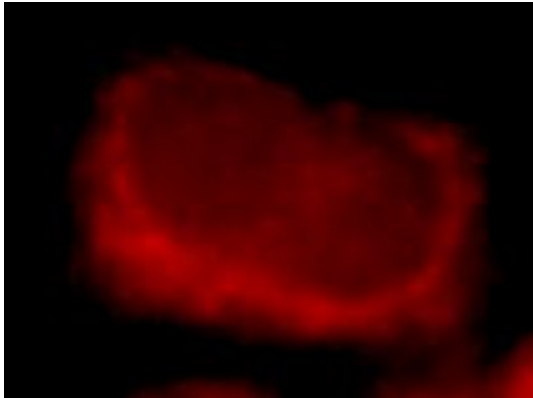
Immunohistochemistry: Paraffin-embedded Human kidney tissue stained with ARG40635 anti-Nrf 2 antibody.



HepG2

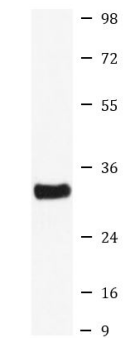
ARG40635 anti-Nrf 2 antibody WB image

Western blot: HepG2 cell lysate stained with ARG40635 anti-Nrf 2 antibody.



ARG43340 anti-NQO1 antibody ICC/IF image

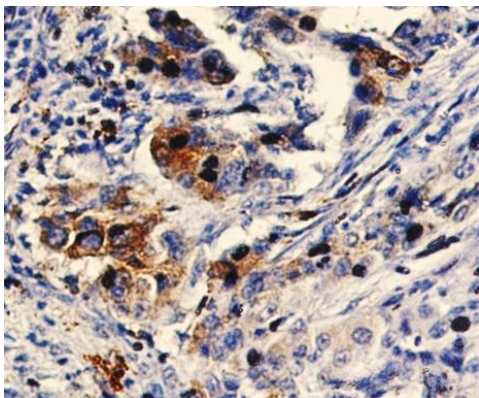
Immunofluorescence: MCF7 cells stained with ARG43340 anti-NQO1 antibody.



SH-SY5Y

ARG43340 anti-NQO1 antibody WB image

Western blot: SH-SY5Y cell lysate stained with ARG43340 anti-NQO1 antibody.



ARG43341 anti-Heme Oxygenase 1 antibody IHC-P image

Immunohistochemistry: Paraffin-embedded Human lung cancer tissue stained with ARG43341 anti-Heme Oxygenase 1 antibody at 1:50 dilution.

ARG43341 anti-Heme Oxygenase 1 antibody WB image

Western blot: A549 cell lysate stained with ARG43341 anti-Heme Oxygenase 1 antibody at 1:500 dilution.

