

ARG30351 JAK2-STAT3 Pathway Antibody Panel

Package: 1 kit
Store at: -20°C

Component

Cat. No.	Component Name	Host clonality	Reactivity	Application	Package
ARG66664	anti-JAK2 antibody	Rabbit pAb	Hu, Ms, Rat	IHC-P, WB	20 µg
ARG57812	anti-JAK2 phospho (Tyr1007 / Tyr1008) antibody	Rabbit pAb	Hu, Ms, Rat	FACS, ICC/IF, IHC-P, WB	20 µl
ARG54150	anti-STAT3 antibody	Mouse mAb	Hu, Ms, Rat, Hm	WB	20 µl
ARG40740	anti-STAT3 phospho (Tyr705) antibody	Rabbit pAb	Hu, Ms, Rat	ICC/IF, IHC-P, IP, WB	20 µl

Summary

Target Name JAK2-STAT3 Pathway Antibody

Properties

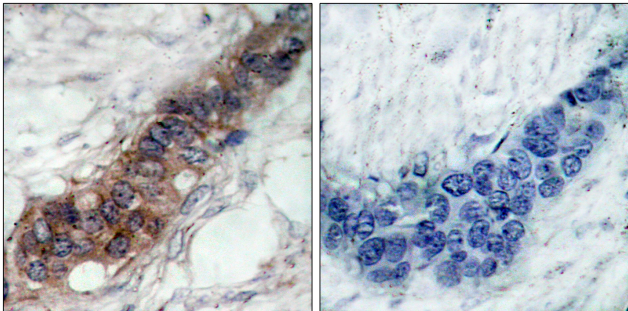
Storage instruction For continuous use, store undiluted antibody at 2-8°C for up to a week. For long-term storage, aliquot and store at -20°C or below. Storage in frost free freezers is not recommended. Avoid repeated freeze/thaw cycles. Suggest spin the vial prior to opening. The antibody solution should be gently mixed before use.

Note For laboratory research only, not for drug, diagnostic or other use.

Bioinformation

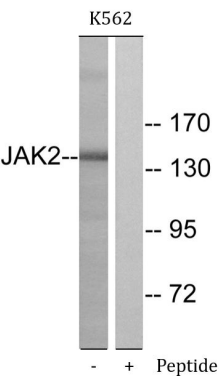
Gene Full Name Antibody Panel for JAK2-STAT3 Pathway

Highlight Related news:
[ISGF3/GAF and JAK2-STAT3 antibody panels are launched;](#)
[MyD88 L265P antibody for lymphoma research;](#)



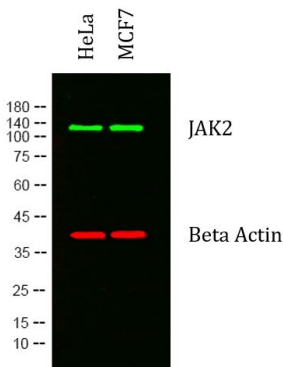
ARG66664 anti-JAK2 antibody IHC-P image

Immunohistochemistry: Paraffin-embedded Human breast carcinoma tissue stained with ARG66664 anti-JAK2 antibody. The picture on the right was blocked with the synthetic peptide.



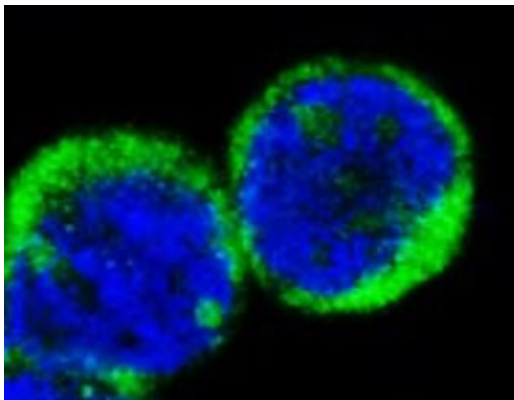
ARG66664 anti-JAK2 antibody WB image

Western blot: K562 cell lysate stained with ARG66664 anti-JAK2 antibody. The lane on the right was blocked with the synthetic peptide.



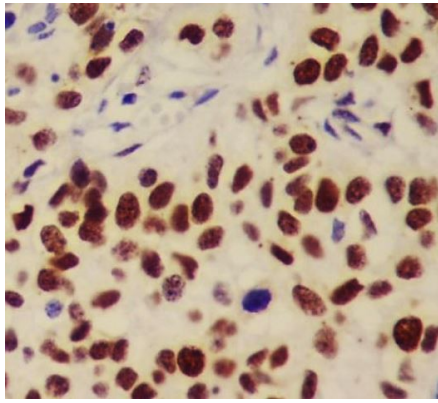
ARG66664 anti-JAK2 antibody WB image

Western blot: HeLa and MCF7 cell lysates stained with ARG66664 anti-JAK2 antibody (green) at 1:1000 dilution, overnight at 4°C. Loading control antibody (red) at 1:5000 dilution, overnight at 4°C.



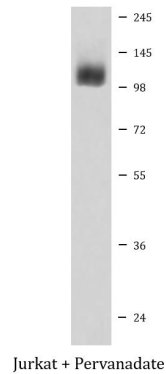
ARG57812 anti-JAK2 phospho (Tyr1007 / Tyr1008) antibody ICC/IF image

Immunofluorescence: Jurkat cells treated with Pervanadate. Cells were stained with ARG57812 anti-JAK2 phospho (Tyr1007 / Tyr1008) antibody.



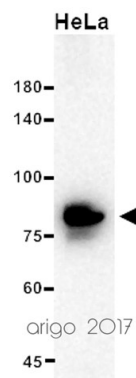
ARG57812 anti-JAK2 phospho (Tyr1007 / Tyr1008) antibody IHC-P image

Immunohistochemistry: Paraffin-embedded Human cervix cancer tissue stained with ARG57812 anti-JAK2 phospho (Tyr1007 / Tyr1008) antibody.



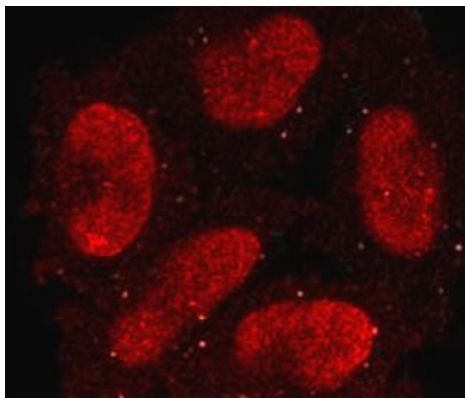
ARG57812 anti-JAK2 phospho (Tyr1007 / Tyr1008) antibody WB image

Western blot: 50 mM Pervanadate treated Jurkat cells. Cell lysate was stained with ARG57812 anti-JAK2 phospho (Tyr1007 / Tyr1008) antibody.



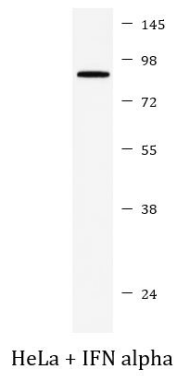
ARG54150 anti-STAT3 antibody WB image

Western blot: 20 µg of HeLa cell lysate stained with ARG54150 anti-STAT3 antibody at 1:1000 dilution.



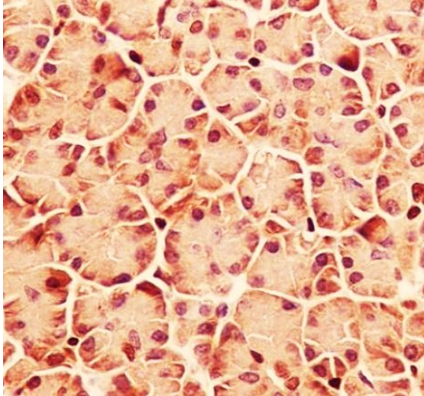
ARG40740 anti-STAT3 phospho (Tyr705) antibody ICC/IF image

Immunofluorescence: HeLa cells treated with IFN alpha and stained with ARG40740 anti-STAT3 phospho (Tyr705) antibody.



ARG40740 anti-STAT3 phospho (Tyr705) antibody WB image

Western blot: HeLa cells treated with IFN alpha and stained with ARG40740 anti-STAT3 phospho (Tyr705) antibody.



ARG40740 anti-STAT3 phospho (Tyr705) antibody IHC-P image

Immunohistochemistry: Paraffin-embedded Human pancreas tissue stained with ARG40740 anti-STAT3 phospho (Tyr705) antibody.