

ARG30352 ISGF3 / GAF Antibody Panel

Package: 1 kit
Store at: -20°C

Component

Cat. No.	Component Name	Host clonality	Reactivity	Application	Package
ARG43795	anti-IRF9 antibody	Rabbit pAb	Hu	FACS, ICC/IF, WB	20 µl
ARG51548	anti-STAT1 phospho (Tyr701) antibody	Rabbit pAb	Hu, Ms, Rat	ICC/IF, IHC-P, WB	20 µl
ARG66600	anti-STAT2 phospho (Tyr690) antibody	Rabbit pAb	Hu, Ms, Rat	IHC-P, WB	20 µg
ARG51041	anti-STAT1 antibody	Rabbit pAb	Hu, Ms, Rat	IHC-P, WB	20 µl
ARG57599	anti-STAT2 antibody	Rabbit pAb	Hu, Ms, Rat	ICC/IF, IHC-P, WB	20 µl

Summary

Target Name ISGF3 / GAF Pathway Antibody

Properties

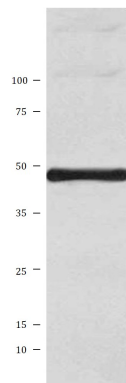
Storage instruction For continuous use, store undiluted antibody at 2-8°C for up to a week. For long-term storage, aliquot and store at -20°C or below. Storage in frost free freezers is not recommended. Avoid repeated freeze/thaw cycles. Suggest spin the vial prior to opening. The antibody solution should be gently mixed before use.

Note For laboratory research only, not for drug, diagnostic or other use.

Bioinformation

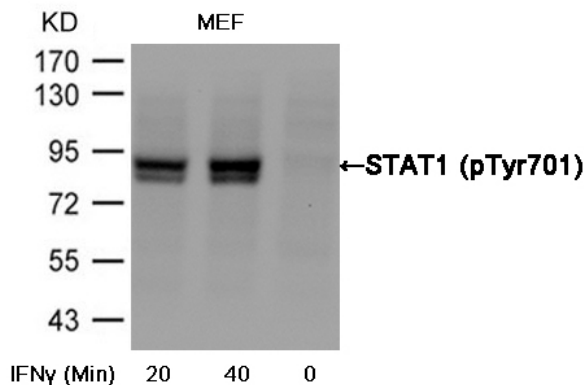
Gene Full Name Antibody Panel for ISGF3/GAF Pathway

Highlight Related news:
[ISGF3/GAF and JAK2-STAT3 antibody panels are launched](#)



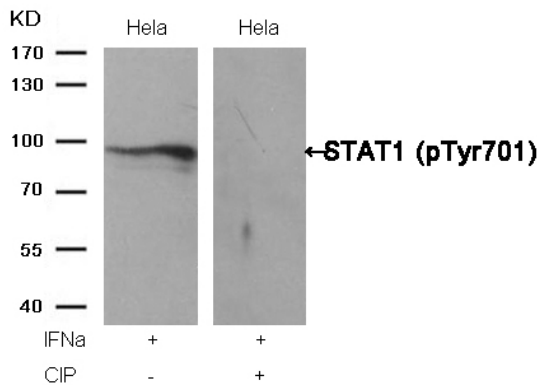
ARG43795 anti-IRF9 antibody WB image

Western blot: Jurkat cell lysate stained with ARG43795 anti-IRF9 antibody.



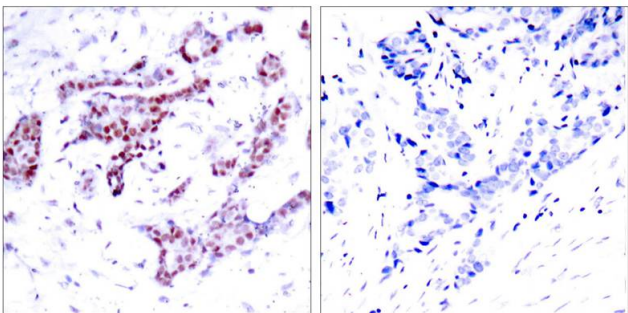
ARG51548 anti-STAT1 phospho (Tyr701) antibody WB image

Western blot: Extracts from MEF cells untreated or treated with interferon-γ (IFNγ) stained with ARG51548 anti-STAT1 phospho (Tyr701) antibody.



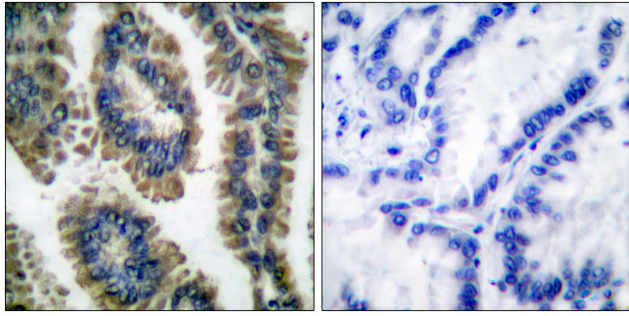
ARG51548 anti-STAT1 phospho (Tyr701) antibody WB image

Western blot: Extracts from HeLa cells, treated with IFNα or calf intestinal phosphatase (CIP), stained with ARG51548 anti-STAT1 phospho (Tyr701) antibody.



ARG51548 anti-STAT1 phospho (Tyr701) antibody IHC-P image

Immunohistochemistry: Paraffin-embedded Human breast carcinoma tissue stained with ARG51548 anti-STAT1 phospho (Tyr701) antibody (left) or the same antibody preincubated with blocking peptide (right).



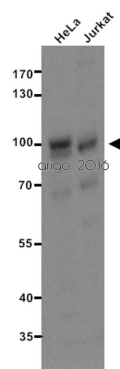
ARG66600 anti-STAT2 phospho (Tyr690) antibody IHC-P image

Immunohistochemistry: Paraffin-embedded Human lung carcinoma tissue stained with ARG66600 anti-STAT2 phospho (Tyr690) antibody. The picture on the right is blocked with the phosphopeptide.



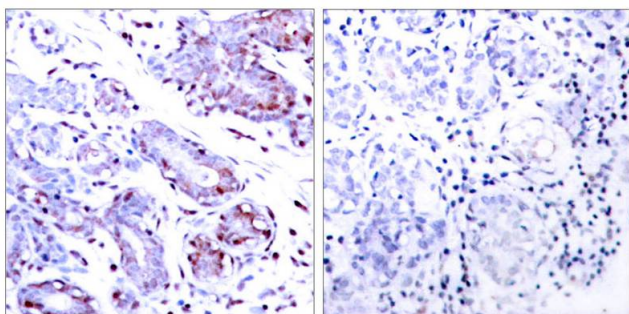
ARG66600 anti-STAT2 phospho (Tyr690) antibody WB image

Western blot: HeLa cell lysate stained with ARG66600 anti-STAT2 phospho (Tyr690) antibody.



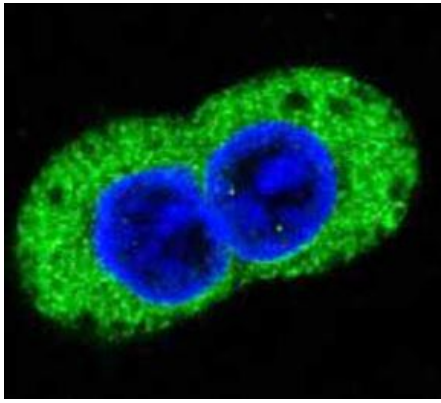
ARG51041 anti-STAT1 antibody WB image

Western blot: 20 µg of HeLa and Jurkat cell lysates stained with ARG51041 anti-STAT1 antibody at 1:500 dilution.



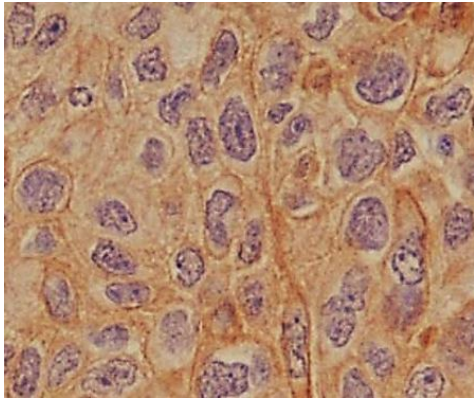
ARG51041 anti-STAT1 antibody IHC-P image

Immunohistochemistry: paraffin-embedded human breast carcinoma tissue stained with anti-STAT1 antibody ARG51041 (left) or the same antibody preincubated with blocking peptide (right).



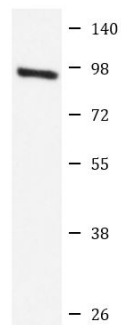
ARG57599 anti-STAT2 antibody ICC/IF image

Immunofluorescence: A431 cells stained with ARG57599 anti-STAT2 antibody.



ARG57599 anti-STAT2 antibody IHC-P image

Immunohistochemistry: Paraffin-embedded Human lung cancer tissue stained with ARG57599 anti-STAT2 antibody.



K562

ARG57599 anti-STAT2 antibody WB image

Western blot: K562 cell lysate stained with ARG57599 anti-STAT2 antibody.