

## ARG40028 anti-OTP antibody

Package: 100 µl  
Store at: -20°C

### Summary

Product Description	Rabbit Polyclonal antibody recognizes OTP
Tested Reactivity	Hu, Ms, Rat
Tested Application	IHC-P, WB
Host	Rabbit
Clonality	Polyclonal
Isotype	IgG
Target Name	OTP
Species	Human
Immunogen	Recombinant fusion protein corresponding to aa. 1-130 of Human OTP (NP_115485.1).
Conjugation	Un-conjugated
Alternate Names	Homeobox protein orthopedia

### Application Instructions

Application table	Application	Dilution
	IHC-P	1:50 - 1:200
	WB	1:500 - 1:2000
Application Note	* The dilutions indicate recommended starting dilutions and the optimal dilutions or concentrations should be determined by the scientist.	
Positive Control	Rat heart and Mouse brain	
Observed Size	34 kDa, 36 kDa	

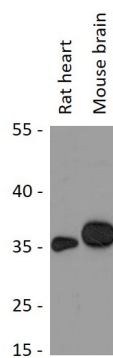
### Properties

Form	Liquid
Purification	Affinity purified.
Buffer	PBS (pH 7.3), 0.02% Sodium azide and 50% Glycerol.
Preservative	0.02% Sodium azide
Stabilizer	50% Glycerol
Storage instruction	For continuous use, store undiluted antibody at 2-8°C for up to a week. For long-term storage, aliquot and store at -20°C. Storage in frost free freezers is not recommended. Avoid repeated freeze/thaw cycles. Suggest spin the vial prior to opening. The antibody solution should be gently mixed before use.
Note	For laboratory research only, not for drug, diagnostic or other use.

## Bioinformation

Gene Symbol	OTP
Gene Full Name	orthopedia homeobox
Background	This gene encodes a member of the homeodomain (HD) family. HD family proteins are helix-turn-helix transcription factors that play key roles in the specification of cell fates. This protein may function during brain development. [provided by RefSeq, Jul 2008]
Function	Probably involved in the differentiation of hypothalamic neuroendocrine cells. [UniProt]
Calculated Mw	34 kDa
Cellular Localization	Nucleus. [UniProt]

## Images



ARG40028 anti-OTP antibody WB image

Western blot: 25 µg of Rat heart and Mouse brain lysates stained with ARG40028 anti-OTP antibody at 1:3000 dilution.