

## ARG40042 anti-RPLP0 antibody

Package: 100 µl  
Store at: -20°C

### Summary

Product Description	Rabbit Polyclonal antibody recognizes RPLP0
Tested Reactivity	Hu, Ms
Tested Application	ICC/IF, WB
Host	Rabbit
Clonality	Polyclonal
Isotype	IgG
Target Name	RPLP0
Species	Human
Immunogen	Recombinant fusion protein corresponding to aa. 1-317 of Human RPLP0 (NP_000993.1).
Conjugation	Un-conjugated
Alternate Names	P0; L10E; 60S acidic ribosomal protein P0; LP0; RPP0; 60S ribosomal protein L10E; PRLP0

### Application Instructions

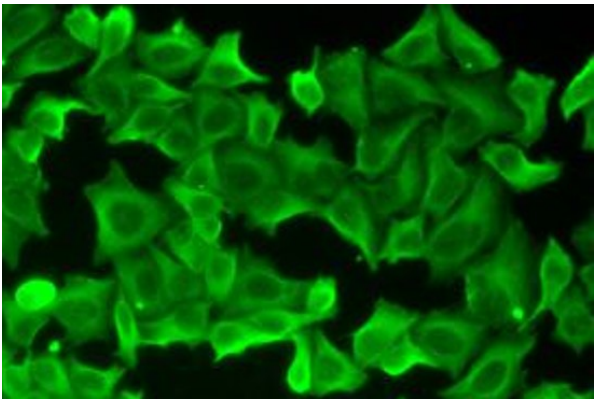
Application table	Application	Dilution
	ICC/IF	1:50 - 1:200
	WB	1:500 - 1:2000
Application Note	* The dilutions indicate recommended starting dilutions and the optimal dilutions or concentrations should be determined by the scientist.	
Positive Control	Mouse thymus and OVCAR3	
Observed Size	37 kDa	

### Properties

Form	Liquid
Purification	Affinity purified.
Buffer	PBS (pH 7.3), 0.02% Sodium azide and 50% Glycerol.
Preservative	0.02% Sodium azide
Stabilizer	50% Glycerol
Storage instruction	For continuous use, store undiluted antibody at 2-8°C for up to a week. For long-term storage, aliquot and store at -20°C. Storage in frost free freezers is not recommended. Avoid repeated freeze/thaw cycles. Suggest spin the vial prior to opening. The antibody solution should be gently mixed before use.
Note	For laboratory research only, not for drug, diagnostic or other use.

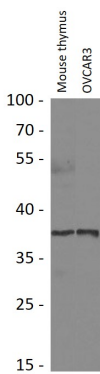
Gene Symbol	RPLP0
Gene Full Name	ribosomal protein, large, P0
Background	Ribosomes, the organelles that catalyze protein synthesis, consist of a small 40S subunit and a large 60S subunit. Together these subunits are composed of 4 RNA species and approximately 80 structurally distinct proteins. This gene encodes a ribosomal protein that is a component of the 60S subunit. The protein, which is the functional equivalent of the E. coli L10 ribosomal protein, belongs to the L10P family of ribosomal proteins. It is a neutral phosphoprotein with a C-terminal end that is nearly identical to the C-terminal ends of the acidic ribosomal phosphoproteins P1 and P2. The P0 protein can interact with P1 and P2 to form a pentameric complex consisting of P1 and P2 dimers, and a P0 monomer. The protein is located in the cytoplasm. Transcript variants derived from alternative splicing exist; they encode the same protein. As is typical for genes encoding ribosomal proteins, there are multiple processed pseudogenes of this gene dispersed through the genome. [provided by RefSeq, Jul 2008]
Function	Ribosomal protein P0 is the functional equivalent of E.coli protein L10. [UniProt]
Calculated Mw	34 kDa
Cellular Localization	Nucleus. Cytoplasm. Note=Localized in cytoplasmic mRNP granules containing untranslated mRNAs (PubMed:19188445, PubMed:17289661). [UniProt]

Images



ARG40042 anti-RPLP0 antibody ICC/IF image

Immunofluorescence: HeLa cells stained with ARG40042 anti-RPLP0 antibody.



ARG40042 anti-RPLP0 antibody WB image

Western blot: 25 µg of Mouse thymus and OVCAR3 cell lysates stained with ARG40042 anti-RPLP0 antibody at 1:1000 dilution.