

ARG40055 anti-EDC3 antibody

Package: 100 µl
Store at: -20°C

Summary

Product Description	Rabbit Polyclonal antibody recognizes EDC3
Tested Reactivity	Hu, Ms, Rat
Tested Application	WB
Host	Rabbit
Clonality	Polyclonal
Isotype	IgG
Target Name	EDC3
Species	Human
Immunogen	Recombinant fusion protein corresponding to aa. 159-508 of Human EDC3 (NP_079359.2).
Conjugation	Un-conjugated
Alternate Names	YjeF_N2; YJEFN2; LSM16; LSM16 homolog; YjeF domain-containing protein 1; YJDC; Enhancer of mRNA-decapping protein 3; hYjeF_N2; YjeF N-terminal domain-containing protein 2

Application Instructions

Application table	Application	Dilution
	WB	1:500 - 1:2000
Application Note	* The dilutions indicate recommended starting dilutions and the optimal dilutions or concentrations should be determined by the scientist.	
Positive Control	Mouse pancreas and HeLa	
Observed Size	60 kDa	

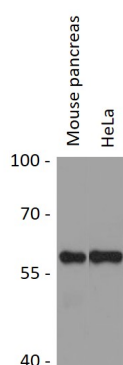
Properties

Form	Liquid
Purification	Affinity purified.
Buffer	PBS (pH 7.3), 0.02% Sodium azide and 50% Glycerol.
Preservative	0.02% Sodium azide
Stabilizer	50% Glycerol
Storage instruction	For continuous use, store undiluted antibody at 2-8°C for up to a week. For long-term storage, aliquot and store at -20°C. Storage in frost free freezers is not recommended. Avoid repeated freeze/thaw cycles. Suggest spin the vial prior to opening. The antibody solution should be gently mixed before use.
Note	For laboratory research only, not for drug, diagnostic or other use.

Bioinformation

Gene Symbol	EDC3
Gene Full Name	enhancer of mRNA decapping 3
Background	EDC3 is associated with an mRNA-decapping complex required for removal of the 5-prime cap from mRNA prior to its degradation from the 5-prime end (Fenger-Gron et al., 2005 [PubMed 16364915]).[supplied by OMIM, Mar 2008]
Function	Binds single-stranded RNA. In the process of mRNA degradation, may play a role in mRNA decapping. May play a role in spermiogenesis and oogenesis. [UniProt]
Calculated Mw	56 kDa
Cellular Localization	Cytoplasm, P-body. Note=Processing bodies (PB). [UniProt]

Images



ARG40055 anti-EDC3 antibody WB image

Western blot: 25 µg of Mouse pancreas and HeLa cell lysates stained with ARG40055 anti-EDC3 antibody at 1:3000 dilution.