

## ARG40072 anti-CNTN6 / Contactin 6 antibody

Package: 100 µl  
Store at: -20°C

### Summary

Product Description	Rabbit Polyclonal antibody recognizes CNTN6 / Contactin 6
Tested Reactivity	Hu
Tested Application	WB
Host	Rabbit
Clonality	Polyclonal
Isotype	IgG
Target Name	CNTN6 / Contactin 6
Species	Human
Immunogen	Recombinant fusion protein corresponding to aa. 20-110 of Human CNTN6 (NP_055276.1).
Conjugation	Un-conjugated
Alternate Names	NB3; hNB-3; Neural recognition molecule NB-3; Contactin-6

### Application Instructions

Application table	Application	Dilution
	WB	1:500 - 1:1000
Application Note	* The dilutions indicate recommended starting dilutions and the optimal dilutions or concentrations should be determined by the scientist.	
Positive Control	Jurkat	
Observed Size	114 kDa	

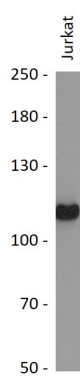
### Properties

Form	Liquid
Purification	Affinity purified.
Buffer	PBS (pH 7.3), 0.02% Sodium azide and 50% Glycerol.
Preservative	0.02% Sodium azide
Stabilizer	50% Glycerol
Storage instruction	For continuous use, store undiluted antibody at 2-8°C for up to a week. For long-term storage, aliquot and store at -20°C. Storage in frost free freezers is not recommended. Avoid repeated freeze/thaw cycles. Suggest spin the vial prior to opening. The antibody solution should be gently mixed before use.
Note	For laboratory research only, not for drug, diagnostic or other use.

Bioinformation

Gene Symbol	CNTN6
Gene Full Name	contactin 6
Background	The protein encoded by this gene is a member of the immunoglobulin superfamily. It is a glycosylphosphatidylinositol (GPI)-anchored neuronal membrane protein that functions as a cell adhesion molecule. It may play a role in the formation of axon connections in the developing nervous system. Alternative splicing results in multiple transcript variants. [provided by RefSeq, Jan 2014]
Function	Contactins mediate cell surface interactions during nervous system development. Participates in oligodendrocytes generation by acting as a ligand of NOTCH1. Its association with NOTCH1 promotes NOTCH1 activation through the released notch intracellular domain (NICD) and subsequent translocation to the nucleus. Involved in motor coordination (By similarity). [UniProt]
Calculated Mw	114 kDa
Cellular Localization	Cell membrane; Lipid-anchor, GPI-anchor. [UniProt]

Images



ARG40072 anti-CNTN6 / Contactin 6 antibody WB image

Western blot: 25 µg of Jurkat cell lysate stained with ARG40072 anti-CNTN6 / Contactin 6 antibody at 1:1000 dilution.