

ARG40076 anti-RRP36 antibody

Package: 100 µl
Store at: -20°C

Summary

Product Description	Rabbit Polyclonal antibody recognizes RRP36
Tested Reactivity	Hu
Tested Application	WB
Host	Rabbit
Clonality	Polyclonal
Isotype	IgG
Target Name	RRP36
Species	Human
Immunogen	Recombinant fusion protein corresponding to aa. 1-259 of Human RRP36 (NP_149103.1).
Conjugation	Un-conjugated
Alternate Names	dJ20C7.4; Ribosomal RNA processing protein 36 homolog; C6orf153

Application Instructions

Application table	Application	Dilution
	WB	1:500 - 1:2000
Application Note	* The dilutions indicate recommended starting dilutions and the optimal dilutions or concentrations should be determined by the scientist.	
Positive Control	HeLa	
Observed Size	36 kDa	

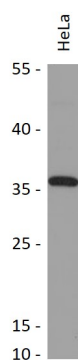
Properties

Form	Liquid
Purification	Affinity purified.
Buffer	PBS (pH 7.3), 0.02% Sodium azide and 50% Glycerol.
Preservative	0.02% Sodium azide
Stabilizer	50% Glycerol
Storage instruction	For continuous use, store undiluted antibody at 2-8°C for up to a week. For long-term storage, aliquot and store at -20°C. Storage in frost free freezers is not recommended. Avoid repeated freeze/thaw cycles. Suggest spin the vial prior to opening. The antibody solution should be gently mixed before use.
Note	For laboratory research only, not for drug, diagnostic or other use.

Bioinformation

Gene Symbol	RRP36
Gene Full Name	ribosomal RNA processing 36
Background	RRP36 functions at an early stage in the processing of 35S preribosomal RNA into the mature 18S species (Gerus et al., 2010 [PubMed 20038530]).[supplied by OMIM, Jul 2010]
Function	Involved in the early processing steps of the pre-rRNA in the maturation pathway leading to the 18S rRNA. [UniProt]
Calculated Mw	30 kDa
Cellular Localization	Nucleus, nucleolus. Note=Concentrated in the fibrillar region of the nucleolus. [UniProt]

Images



ARG40076 anti-RRP36 antibody WB image

Western blot: 25 µg of HeLa cell lysate stained with ARG40076 anti-RRP36 antibody at 1:1000 dilution.