

ARG40078 anti-LHPP antibody

Package: 100 µl
Store at: -20°C

Summary

Product Description	Rabbit Polyclonal antibody recognizes LHPP
Tested Reactivity	Hu, Ms, Rat
Tested Application	ICC/IF, WB
Host	Rabbit
Clonality	Polyclonal
Isotype	IgG
Target Name	LHPP
Species	Human
Immunogen	Recombinant fusion protein corresponding to aa. 1-270 of Human LHPP (NP_071409.3).
Conjugation	Un-conjugated
Alternate Names	EC 3.1.3.-; hLHPP; HDHD2B; EC 3.6.1.1; Phospholysine phosphohistidine inorganic pyrophosphate phosphatase

Application Instructions

Application table	Application	Dilution
	ICC/IF	1:50 - 1:200
	WB	1:500 - 1:2000
Application Note	* The dilutions indicate recommended starting dilutions and the optimal dilutions or concentrations should be determined by the scientist.	
Positive Control	Rat kidney	
Observed Size	29 kDa	

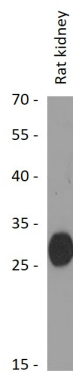
Properties

Form	Liquid
Purification	Affinity purified.
Buffer	PBS (pH 7.3), 0.02% Sodium azide and 50% Glycerol.
Preservative	0.02% Sodium azide
Stabilizer	50% Glycerol
Storage instruction	For continuous use, store undiluted antibody at 2-8°C for up to a week. For long-term storage, aliquot and store at -20°C. Storage in frost free freezers is not recommended. Avoid repeated freeze/thaw cycles. Suggest spin the vial prior to opening. The antibody solution should be gently mixed before use.
Note	For laboratory research only, not for drug, diagnostic or other use.

Bioinformation

Gene Symbol	LHPP
Gene Full Name	phospholysine phosphohistidine inorganic pyrophosphate phosphatase
Function	Phosphatase that hydrolyzes imidodiphosphate, 3-phosphohistidine and 6-phospholysine. Has broad substrate specificity and can also hydrolyze inorganic diphosphate, but with lower efficiency (By similarity). [UniProt]
Calculated Mw	29 kDa
Cellular Localization	Cytoplasm. Nucleus. [UniProt]

Images



ARG40078 anti-LHPP antibody WB image

Western blot: 25 µg of Rat kidney lysate stained with ARG40078 anti-LHPP antibody at 1:1000 dilution.