

ARG40096 anti-TOMM22 antibody

Package: 100 µl
Store at: -20°C

Summary

Product Description	Rabbit Polyclonal antibody recognizes TOMM22
Tested Reactivity	Hu
Tested Application	WB
Host	Rabbit
Clonality	Polyclonal
Isotype	IgG
Target Name	TOMM22
Species	Human
Immunogen	Recombinant fusion protein corresponding to aa. 1-83 of Human TOMM22 (NP_064628.1).
Conjugation	Un-conjugated
Alternate Names	Mitochondrial import receptor subunit TOM22 homolog; Translocase of outer membrane 22 kDa subunit homolog; 1C9-2; hTom22; MSTP065; MST065; TOM22

Application Instructions

Application table	Application	Dilution
	WB	1:500 - 1:2000
Application Note	* The dilutions indicate recommended starting dilutions and the optimal dilutions or concentrations should be determined by the scientist.	
Positive Control	K562	
Observed Size	16 kDa	

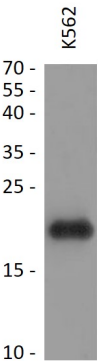
Properties

Form	Liquid
Purification	Affinity purified.
Buffer	PBS (pH 7.3), 0.02% Sodium azide and 50% Glycerol.
Preservative	0.02% Sodium azide
Stabilizer	50% Glycerol
Storage instruction	For continuous use, store undiluted antibody at 2-8°C for up to a week. For long-term storage, aliquot and store at -20°C. Storage in frost free freezers is not recommended. Avoid repeated freeze/thaw cycles. Suggest spin the vial prior to opening. The antibody solution should be gently mixed before use.
Note	For laboratory research only, not for drug, diagnostic or other use.

Bioinformation

Gene Symbol	TOMM22
Gene Full Name	translocase of outer mitochondrial membrane 22 homolog (yeast)
Background	The protein encoded by this gene is an integral membrane protein of the mitochondrial outer membrane. The encoded protein interacts with TOMM20 and TOMM40, and forms a complex with several other proteins to import cytosolic preproteins into the mitochondrion. [provided by RefSeq, Jul 2008]
Function	Central receptor component of the translocase of the outer membrane of mitochondria (TOM complex) responsible for the recognition and translocation of cytosolically synthesized mitochondrial preproteins. Together with the peripheral receptor TOM20 functions as the transit peptide receptor and facilitates the movement of preproteins into the translocation pore. [UniProt]
Calculated Mw	16 kDa
Cellular Localization	Mitochondrion outer membrane; Single-pass membrane protein. [UniProt]

Images



ARG40096 anti-TOMM22 antibody WB image

Western blot: 25 µg of K562 cell lysate stained with ARG40096 anti-TOMM22 antibody at 1:1000 dilution.