

ARG40106 anti-RNF166 antibody

Package: 100 µl
Store at: -20°C

Summary

Product Description	Rabbit Polyclonal antibody recognizes RNF166
Tested Reactivity	Hu, Ms, Rat
Tested Application	IHC-P, WB
Host	Rabbit
Clonality	Polyclonal
Isotype	IgG
Target Name	RNF166
Species	Human
Immunogen	Synthetic peptide within aa. 100 to the C-terminus of Human RNF166 (NP_849163.1).
Conjugation	Un-conjugated
Alternate Names	RING finger protein 166

Application Instructions

Application table	Application	Dilution
	IHC-P	1:50 - 1:200
	WB	1:500 - 1:2000
Application Note	* The dilutions indicate recommended starting dilutions and the optimal dilutions or concentrations should be determined by the scientist.	
Positive Control	K562	
Observed Size	26 kDa	

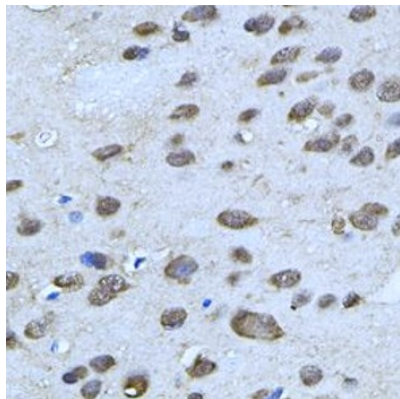
Properties

Form	Liquid
Purification	Affinity purified.
Buffer	PBS (pH 7.3), 0.02% Sodium azide and 50% Glycerol.
Preservative	0.02% Sodium azide
Stabilizer	50% Glycerol
Storage instruction	For continuous use, store undiluted antibody at 2-8°C for up to a week. For long-term storage, aliquot and store at -20°C. Storage in frost free freezers is not recommended. Avoid repeated freeze/thaw cycles. Suggest spin the vial prior to opening. The antibody solution should be gently mixed before use.
Note	For laboratory research only, not for drug, diagnostic or other use.

Bioinformation

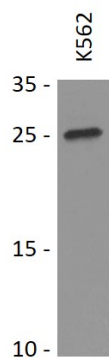
Gene Symbol	RNF166
Gene Full Name	ring finger protein 166
Calculated Mw	26 kDa

Images



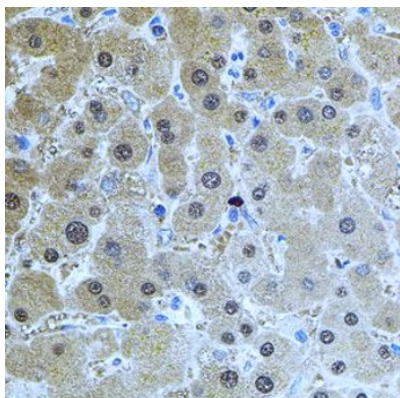
ARG40106 anti-RNF166 antibody IHC-P image

Immunohistochemistry: Paraffin-embedded Rat brain stained with ARG40106 anti-RNF166 antibody.



ARG40106 anti-RNF166 antibody WB image

Western blot: 25 µg of K562 cell lysate stained with ARG40106 anti-RNF166 antibody at 1:1000 dilution.



ARG40106 anti-RNF166 antibody IHC-P image

Immunohistochemistry: Paraffin-embedded Human liver injury stained with ARG40106 anti-RNF166 antibody.