

ARG40121 anti-FXYD6 antibody

Package: 100 µl
Store at: -20°C

Summary

Product Description	Rabbit Polyclonal antibody recognizes FXYD6
Tested Reactivity	Hu, Ms
Tested Application	FACS, IHC-P, WB
Host	Rabbit
Clonality	Polyclonal
Isotype	IgG
Target Name	FXYD6
Species	Human
Immunogen	KLH-conjugated synthetic peptide corresponding to aa. 81-115 of Human FXYD6.
Conjugation	Un-conjugated
Alternate Names	Phosphohippolin; FXYD domain-containing ion transport regulator 6

Application Instructions

Application table	Application	Dilution
	FACS	1:25
	IHC-P	1:25
	WB	1:1000
Application Note	* The dilutions indicate recommended starting dilutions and the optimal dilutions or concentrations should be determined by the scientist.	
Positive Control	Human brain	

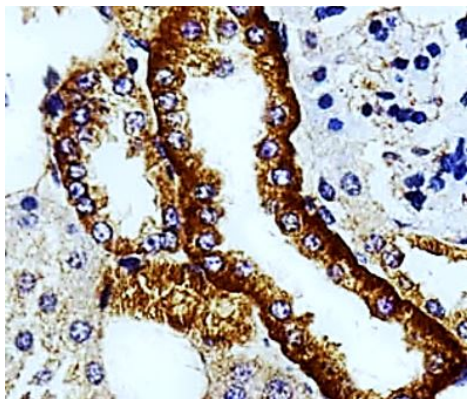
Properties

Form	Liquid
Purification	Purification with Protein A and immunogen peptide.
Buffer	PBS and 0.09% (W/V) Sodium azide.
Preservative	0.09% (W/V) Sodium azide.
Storage instruction	For continuous use, store undiluted antibody at 2-8°C for up to a week. For long-term storage, aliquot and store at -20°C or below. Storage in frost free freezers is not recommended. Avoid repeated freeze/thaw cycles. Suggest spin the vial prior to opening. The antibody solution should be gently mixed before use.
Note	For laboratory research only, not for drug, diagnostic or other use.

Bioinformation

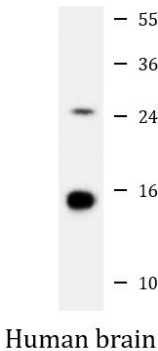
Gene Symbol	FXYP6
Gene Full Name	FXYP domain containing ion transport regulator 6
Background	This gene encodes a member of the FXYP family of transmembrane proteins. This particular protein encodes phosphohippolin, which likely affects the activity of Na,K-ATPase. Multiple alternatively spliced transcript variants encoding the same protein have been described. Related pseudogenes have been identified on chromosomes 10 and X. Read-through transcripts have been observed between this locus and the downstream sodium/potassium-transporting ATPase subunit gamma (FXYP2, GeneID 486) locus.[provided by RefSeq, Feb 2011]
Calculated Mw	11 kDa
Cellular Localization	Membrane; Single-pass type I membrane protein. [UniProt]

Images



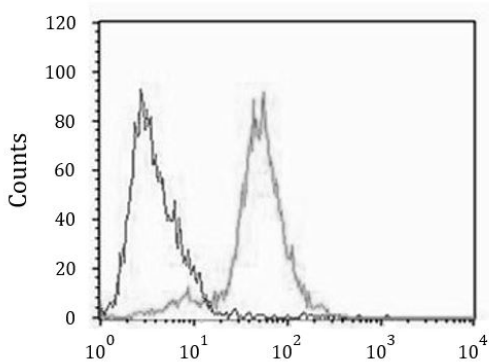
ARG40121 anti-FXYP6 antibody IHC-P image

Immunohistochemistry: Paraffin-embedded Mouse kidney stained with ARG40121 anti-FXYP6 antibody at 1:100 dilution.



ARG40121 anti-FXYP6 antibody WB image

Western blot: 35 µg of Human brain lysate stained with ARG40121 anti-FXYP6 antibody at 1:1000 dilution.



ARG40121 anti-FXYP6 antibody FACS image

Flow Cytometry: SH-SY5Y cells stained with ARG40121 anti-FXYP6 antibody (right histogram) at 1:25 dilution, followed by Alexa Fluor® 488 labelled secondary antibody. An isotype control of Rabbit IgG (left histogram) used under the same conditions.