

## ARG40122 anti-TBX22 antibody

Package: 100 µl  
Store at: -20°C

### Summary

Product Description	Rabbit Polyclonal antibody recognizes TBX22
Tested Reactivity	Hu
Tested Application	WB
Host	Rabbit
Clonality	Polyclonal
Isotype	IgG
Target Name	TBX22
Species	Human
Immunogen	KLH-conjugated synthetic peptide corresponding to aa. 491-525 of Human TBX22.
Conjugation	Un-conjugated
Alternate Names	T-box protein 22; T-box transcription factor TBX22; CPX; dJ795G23.1; ABERS; CLPA; TBXX

### Application Instructions

Application table	Application	Dilution
	WB	1:1000
Application Note	* The dilutions indicate recommended starting dilutions and the optimal dilutions or concentrations should be determined by the scientist.	
Positive Control	PC-3	

### Properties

Form	Liquid
Purification	Purification with Protein A and immunogen peptide.
Buffer	PBS and 0.09% (W/V) Sodium azide.
Preservative	0.09% (W/V) Sodium azide.
Storage instruction	For continuous use, store undiluted antibody at 2-8°C for up to a week. For long-term storage, aliquot and store at -20°C or below. Storage in frost free freezers is not recommended. Avoid repeated freeze/thaw cycles. Suggest spin the vial prior to opening. The antibody solution should be gently mixed before use.
Note	For laboratory research only, not for drug, diagnostic or other use.

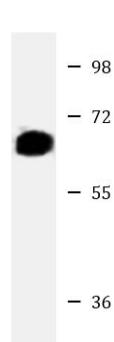
### Bioinformation

Gene Symbol	TBX22
-------------	-------

Gene Full Name	T-box 22
Background	This gene is a member of a phylogenetically conserved family of genes that share a common DNA-binding domain, the T-box. T-box genes encode transcription factors involved in the regulation of developmental processes. Mutations in this gene have been associated with the inherited X-linked disorder, Cleft palate with ankyloglossia, and it is believed to play a major role in human palatogenesis. Alternatively spliced transcript variants encoding different isoforms have been found for this gene. [provided by RefSeq, Jul 2008]
Function	Probable transcriptional regulator involved in developmental processes. This is major determinant crucial to palatogenesis. [UniProt]
Calculated Mw	58 kDa
Cellular Localization	Nucleus. [UniProt]

Images

---



PC-3

ARG40122 anti-TBX22 antibody WB image

Western blot: 20 µg of PC-3 cell lysate stained with ARG40122 anti-TBX22 antibody at 1:1000 dilution.