

ARG40126
anti-EVA1A / TMEM166 antibodyPackage: 100 µl
Store at: -20°C

Summary

Product Description	Rabbit Polyclonal antibody recognizes EVA1A / TMEM166
Tested Reactivity	Zfsh
Tested Application	WB
Host	Rabbit
Clonality	Polyclonal
Isotype	IgG
Target Name	EVA1A / TMEM166
Species	Zebrafish
Immunogen	KLH-conjugated synthetic peptide between aa. 104-137 of Zebrafish EVA1A / TMEM166.
Conjugation	Un-conjugated
Alternate Names	Protein eva-1 homolog A; Transmembrane protein 166; FAM176A; Protein FAM176A; TMEM166

Application Instructions

Application table	Application	Dilution
	WB	1:1000
Application Note	* The dilutions indicate recommended starting dilutions and the optimal dilutions or concentrations should be determined by the scientist.	
Positive Control	Zebrafish muscle	

Properties

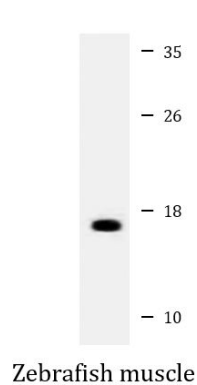
Form	Liquid
Purification	Purification with Protein A and immunogen peptide.
Buffer	PBS and 0.09% (W/V) Sodium azide.
Preservative	0.09% (W/V) Sodium azide.
Storage instruction	For continuous use, store undiluted antibody at 2-8°C for up to a week. For long-term storage, aliquot and store at -20°C or below. Storage in frost free freezers is not recommended. Avoid repeated freeze/thaw cycles. Suggest spin the vial prior to opening. The antibody solution should be gently mixed before use.
Note	For laboratory research only, not for drug, diagnostic or other use.

Bioinformation

Gene Symbol	EVA1A
-------------	-------

Gene Full Name	eva-1 homolog A (C. elegans)
Function	Acts as a regulator of programmed cell death, mediating both autophagy and apoptosis. [UniProt]
Calculated Mw	17 kDa
Cellular Localization	Endoplasmic reticulum membrane; Single-pass membrane protein. Lysosome membrane; Single-pass membrane protein. [UniProt]

Images



ARG40126 anti-EVA1A / TMEM166 antibody WB image

Western blot: 20 µg of Zebrafish muscle lysate stained with ARG40126 anti-EVA1A / TMEM166 antibody at 1:1000 dilution.