

ARG40128 anti-YY1AP1 antibody

Package: 100 µl
Store at: -20°C

Summary

Product Description	Rabbit Polyclonal antibody recognizes YY1AP1
Tested Reactivity	Hu
Tested Application	WB
Host	Rabbit
Clonality	Polyclonal
Isotype	IgG
Target Name	YY1AP1
Species	Human
Immunogen	KLH-conjugated synthetic peptide corresponding to aa. 437-468 of Human YY1AP1.
Conjugation	Un-conjugated
Alternate Names	YY1AP; Hepatocellular carcinoma susceptibility protein; YAP; HCCA1; HCCA2; Hepatocellular carcinoma-associated protein 2; YY1-associated protein 1

Application Instructions

Application table	Application	Dilution
	WB	1:1000 - 1:2000
Application Note	* The dilutions indicate recommended starting dilutions and the optimal dilutions or concentrations should be determined by the scientist.	
Positive Control	Human skeletal muscle	

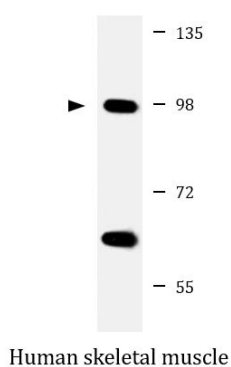
Properties

Form	Liquid
Purification	Purification with Protein A and immunogen peptide.
Buffer	PBS and 0.09% (W/V) Sodium azide.
Preservative	0.09% (W/V) Sodium azide.
Storage instruction	For continuous use, store undiluted antibody at 2-8°C for up to a week. For long-term storage, aliquot and store at -20°C or below. Storage in frost free freezers is not recommended. Avoid repeated freeze/thaw cycles. Suggest spin the vial prior to opening. The antibody solution should be gently mixed before use.
Note	For laboratory research only, not for drug, diagnostic or other use.

Bioinformation

Gene Symbol	YY1AP1
Gene Full Name	YY1 associated protein 1
Background	The encoded gene product presumably interacts with YY1 protein; however, its exact function is not known. Alternative splicing results in multiple transcript variants encoding different isoforms. [provided by RefSeq, Jul 2008]
Function	Enhances transcription activation by YY1. May play a role in cell cycle regulation. [UniProt]
Calculated Mw	88 kDa
Cellular Localization	Cytoplasm. Nucleus. Nucleus, nucleoplasm. Nucleus, nucleolus. [UniProt]

Images



ARG40128 anti-YY1AP1 antibody WB image

Western blot: 20 µg of Human skeletal muscle lysate stained with ARG40128 anti-YY1AP1 antibody at 1:2000 dilution.