

ARG40129 anti-NASP antibody

Package: 100 µl
Store at: -20°C

Summary

Product Description	Rabbit Polyclonal antibody recognizes NASP
Tested Reactivity	Hu
Tested Application	FACS, WB
Host	Rabbit
Clonality	Polyclonal
Isotype	IgG
Target Name	NASP
Species	Human
Immunogen	KLH-conjugated synthetic peptide corresponding to aa. 152-180 of Human NASP.
Conjugation	Un-conjugated
Alternate Names	Nuclear autoantigenic sperm protein; PRO1999; NASP; FLB7527; HMDRA1

Application Instructions

Application table	Application	Dilution
	FACS	1:10 - 1:50
	WB	1:1000
Application Note	* The dilutions indicate recommended starting dilutions and the optimal dilutions or concentrations should be determined by the scientist.	
Positive Control	HeLa	

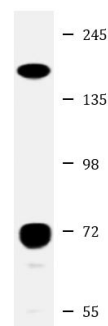
Properties

Form	Liquid
Purification	Saturated Ammonium Sulfate (SAS) precipitation followed by dialysis against PBS.
Buffer	PBS and 0.09% (W/V) Sodium azide.
Preservative	0.09% (W/V) Sodium azide.
Storage instruction	For continuous use, store undiluted antibody at 2-8°C for up to a week. For long-term storage, aliquot and store at -20°C or below. Storage in frost free freezers is not recommended. Avoid repeated freeze/thaw cycles. Suggest spin the vial prior to opening. The antibody solution should be gently mixed before use.
Note	For laboratory research only, not for drug, diagnostic or other use.

Bioinformation

Gene Symbol	NASP
Gene Full Name	nuclear autoantigenic sperm protein (histone-binding)
Background	This gene encodes a H1 histone binding protein that is involved in transporting histones into the nucleus of dividing cells. Multiple isoforms are encoded by transcript variants of this gene. The somatic form is expressed in all mitotic cells, is localized to the nucleus, and is coupled to the cell cycle. The testicular form is expressed in embryonic tissues, tumor cells, and the testis. In male germ cells, this protein is localized to the cytoplasm of primary spermatocytes, the nucleus of spermatids, and the periacrosomal region of mature spermatozoa. [provided by RefSeq, Jul 2008]
Function	Required for DNA replication, normal cell cycle progression and cell proliferation. Forms a cytoplasmic complex with HSP90 and H1 linker histones and stimulates HSP90 ATPase activity. NASP and H1 histone are subsequently released from the complex and translocate to the nucleus where the histone is released for binding to DNA (By similarity). [UniProt]
Calculated Mw	85 kDa
Cellular Localization	Cytoplasm. Nucleus. [UniProt]

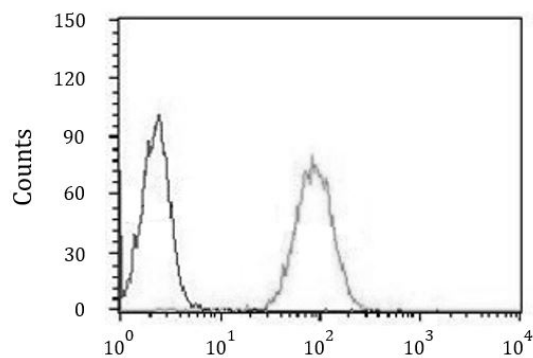
Images



HeLa

ARG40129 anti-NASP antibody WB image

Western blot: 20 µg of HeLa whole cell lysate stained with ARG40129 anti-NASP antibody at 1:1000 dilution.



ARG40129 anti-NASP antibody FACS image

Flow Cytometry: HL-60 cells stained with ARG40129 anti-NASP antibody (right histogram) or without primary antibody as control (left histogram), followed by incubation with FITC labelled secondary antibody.