

ARG40140 anti-IL11RA antibody

Package: 100 µl
Store at: -20°C

Summary

Product Description	Rabbit Polyclonal antibody recognizes IL11RA
Tested Reactivity	Hu
Tested Application	WB
Host	Rabbit
Clonality	Polyclonal
Isotype	IgG
Target Name	IL11RA
Species	Human
Immunogen	KLH-conjugated synthetic peptide between aa. 372-403 of Human IL11RA.
Conjugation	Un-conjugated
Alternate Names	CRSDA; IL-11 receptor subunit alpha; IL-11RA; IL-11R subunit alpha; Interleukin-11 receptor subunit alpha; IL-11R-alpha

Application Instructions

Application table	Application	Dilution
	WB	1:2000
Application Note	* The dilutions indicate recommended starting dilutions and the optimal dilutions or concentrations should be determined by the scientist.	
Positive Control	Jurkat	

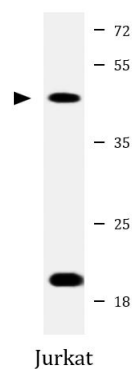
Properties

Form	Liquid
Purification	Purification with Protein A and immunogen peptide.
Buffer	PBS and 0.09% (W/V) Sodium azide.
Preservative	0.09% (W/V) Sodium azide.
Storage instruction	For continuous use, store undiluted antibody at 2-8°C for up to a week. For long-term storage, aliquot and store at -20°C or below. Storage in frost free freezers is not recommended. Avoid repeated freeze/thaw cycles. Suggest spin the vial prior to opening. The antibody solution should be gently mixed before use.
Note	For laboratory research only, not for drug, diagnostic or other use.

Bioinformation

Gene Symbol	IL11RA
Gene Full Name	interleukin 11 receptor, alpha
Background	Interleukin 11 is a stromal cell-derived cytokine that belongs to a family of pleiotropic and redundant cytokines that use the gp130 transducing subunit in their high affinity receptors. This gene encodes the IL-11 receptor, which is a member of the hematopoietic cytokine receptor family. This particular receptor is very similar to ciliary neurotrophic factor, since both contain an extracellular region with a 2-domain structure composed of an immunoglobulin-like domain and a cytokine receptor-like domain. Multiple alternatively spliced transcript variants have been found for this gene. [provided by RefSeq, Jun 2012]
Function	Receptor for interleukin-11. The receptor systems for IL6, LIF, OSM, CNTF, IL11 and CT1 can utilize IL6ST for initiating signal transmission. The IL11/IL11RA/IL6ST complex may be involved in the control of proliferation and/or differentiation of skeletogenic progenitor or other mesenchymal cells. Essential for the normal development of craniofacial bones and teeth. Restricts suture fusion and tooth number. [UniProt]
Calculated Mw	45 kDa
Cellular Localization	Membrane; Single-pass type I membrane protein. [UniProt]

Images



ARG40140 anti-IL11RA antibody WB image

Western blot: 20 µg of Jurkat whole cell lysate stained with ARG40140 anti-IL11RA antibody at 1:2000 dilution.