

ARG40149 anti-CORO1B phospho (Ser2) antibody

Package: 50 µl
Store at: -20°C

Summary

Product Description	Rabbit Polyclonal antibody recognizes CORO1B phospho (Ser2)
Tested Reactivity	Hu, Rb
Predict Reactivity	Ms, Rat
Tested Application	ICC/IF, WB
Specificity	This antibody detects a ~60 kDa band corresponding to Coronin-1B on SDS-PAGE immunoblots of A431 or HeLa cells treated with Calyculin A. This band is not observed in control cells and the band observed in Calyculin A-treated cells can be removed with lambda phosphatase treatment.
Host	Rabbit
Clonality	Polyclonal
Isotype	IgG
Target Name	CORO1B
Species	Human
Immunogen	Phosphospecific peptide (coupled to carrier protein) around Ser2 of Human CORO1B. This sequence has high homology to the conserved site in Rat and Mouse CORO1B and in CORO1A. However, this sequence has low homology to the conserved region in other coronins.
Conjugation	Un-conjugated
Alternate Names	Coronin-1B; Coronin-2; CORONIN-2

Application Instructions

Application table	Application	Dilution
	ICC/IF	1:100
	WB	1:1000
Application Note	WB: Antibody is suggested to be diluted in 5% skimmed milk/Tris buffer with 0.04% Tween20 and incubated for 1 hour at room temperature. * The dilutions indicate recommended starting dilutions and the optimal dilutions or concentrations should be determined by the scientist.	
Observed Size	60 kDa	

Properties

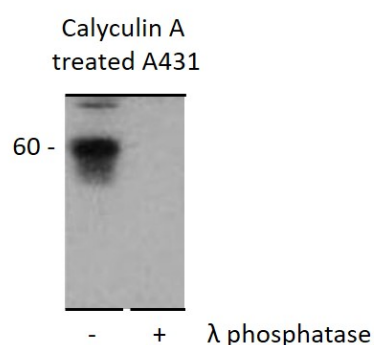
Form	Liquid
Purification	Affinity purification with immunogen.
Buffer	PBS, 0.05% Sodium azide, 50% Glycerol and 1 mg/ml BSA.
Preservative	0.05% Sodium azide

Stabilizer	50% Glycerol and 1 mg/ml BSA
Storage instruction	For continuous use, store undiluted antibody at 2-8°C for up to a week. For long-term storage, aliquot and store at -20°C. Storage in frost free freezers is not recommended. Avoid repeated freeze/thaw cycles. Suggest spin the vial prior to opening. The antibody solution should be gently mixed before use.
Note	For laboratory research only, not for drug, diagnostic or other use.

Bioinformation

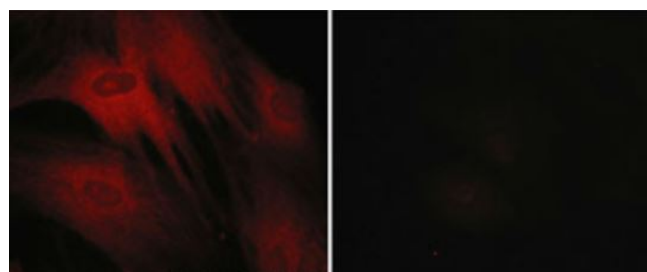
Gene Symbol	CORO1B
Gene Full Name	coronin, actin binding protein, 1B
Background	Members of the coronin family, such as CORO1B, are WD repeat-containing actin-binding proteins that regulate cell motility (Cai et al., 2005 [PubMed 16027158]).[supplied by OMIM, Mar 2008]
Function	Regulates leading edge dynamics and cell motility in fibroblasts. May be involved in cytokinesis and signal transduction (By similarity). [UniProt]
Calculated Mw	54 kDa
PTM	Phosphorylation by PKC on Ser-2 regulates the interaction with the Arp2/3 complex and cell motility in fibroblasts. Phosphorylation does not seem to affect subcellular location. [UniProt]
Cellular Localization	Cytoplasm, cytoskeleton. Note=Localized to the leading edge in fibroblasts, as well as weakly along actin stress fibers. [UniProt]

Images



ARG40149 anti-CORO1B phospho (Ser2) antibody WB image

Western blot: A431 cells treated with Calyculin A (100 nM) for 30 min (left) before treatment with lambda phosphatase (right). The blots were stained with ARG40149 anti-CORO1B phospho (Ser2) antibody.



ARG40149 anti-CORO1B phospho (Ser2) antibody ICC/IF image

Immunofluorescence: Rabbit spleen fibroblasts treated with Calyculin A. The cells were stained with ARG40149 anti-CORO1B phospho (Ser2) antibody (red). The antibodies were used in the absence (left) or presence (right) of their respective blocking peptide.