

ARG40150 anti-REXO4 / PMC2 antibody

Package: 50 µl
Store at: -20°C

Summary

Product Description	Rabbit Polyclonal antibody recognizes REXO4 / PMC2
Tested Reactivity	Hu
Tested Application	WB
Host	Rabbit
Clonality	Polyclonal
Isotype	IgG
Target Name	REXO4 / PMC2
Species	Human
Immunogen	Synthetic peptide around the middle region of Human REXO4 / PMC2. (within the following region: PADIEAAIGPEAAKIARKQLGQSEGSVSLSLVKEQAFGGLTRALALDCEM)
Conjugation	Un-conjugated
Alternate Names	RNA exonuclease 4; hPMC2; Prevents mitotic catastrophe 2 protein homolog; XPMC2H; Exonuclease XPMC2; EC 3.1.-.-; REX4; XPMC2

Application Instructions

Application table	<table> <tr> <th>Application</th><th>Dilution</th></tr> <tr> <td>WB</td><td>0.2 - 1 µg/ml</td></tr> </table>	Application	Dilution	WB	0.2 - 1 µg/ml
Application	Dilution				
WB	0.2 - 1 µg/ml				
Application Note	* The dilutions indicate recommended starting dilutions and the optimal dilutions or concentrations should be determined by the scientist.				
Positive Control	Human lung				

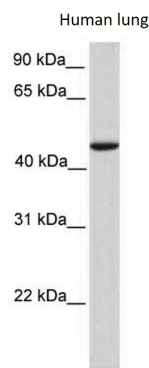
Properties

Form	Liquid
Purification	Affinity purified.
Buffer	PBS, 0.09% (w/v) Sodium azide and 2% Sucrose.
Preservative	0.09% (w/v) Sodium azide
Stabilizer	2% Sucrose
Concentration	Batch dependent: 0.5 - 1 mg/ml
Storage instruction	For continuous use, store undiluted antibody at 2-8°C for up to a week. For long-term storage, aliquot and store at -20°C or below. Storage in frost free freezers is not recommended. Avoid repeated freeze/thaw cycles. Suggest spin the vial prior to opening. The antibody solution should be gently mixed before use.
Note	For laboratory research only, not for drug, diagnostic or other use.

Bioinformation

Gene Symbol	REXO4
Gene Full Name	REX4 homolog, 3'-5' exonuclease
Calculated Mw	47 kDa
Cellular Localization	Nucleus, nucleolus. [UniProt]

Images



ARG40150 anti-REXO4 / PMC2 antibody WB image

Western blot: Human lung lysate stained with ARG40150 anti-REXO4 / PMC2 antibody at 0.2 - 1 µg/ml dilution.