

ARG40152 anti-CRISPLD2 antibody

Package: 50 µl
Store at: -20°C

Summary

Product Description	Rabbit Polyclonal antibody recognizes CRISPLD2
Tested Reactivity	Hu
Tested Application	WB
Host	Rabbit
Clonality	Polyclonal
Isotype	IgG
Target Name	CRISPLD2
Species	Human
Immunogen	Synthetic peptide around the N-terminal region of Human CRISPLD2. (within the following region: MSCVLGGVIPLGLLFLVCGSQGYLLPNVTLLLELLSKYQHNEHSRVRRA)
Conjugation	Un-conjugated
Alternate Names	CRISP11; CRISP-11; LCCL domain-containing cysteine-rich secretory protein 2; LCRISP2; Cysteine-rich secretory protein LCCL domain-containing 2; Cysteine-rich secretory protein 11

Application Instructions

Application table	<table> <tr> <th>Application</th><th>Dilution</th></tr> <tr> <td>WB</td><td>0.2 - 1 µg/ml</td></tr> </table>	Application	Dilution	WB	0.2 - 1 µg/ml
Application	Dilution				
WB	0.2 - 1 µg/ml				
Application Note	* The dilutions indicate recommended starting dilutions and the optimal dilutions or concentrations should be determined by the scientist.				
Positive Control	Jurkat				

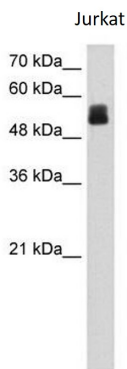
Properties

Form	Liquid
Purification	Affinity purified.
Buffer	PBS, 0.09% (w/v) Sodium azide and 2% Sucrose.
Preservative	0.09% (w/v) Sodium azide
Stabilizer	2% Sucrose
Concentration	Batch dependent: 0.5 - 1 mg/ml
Storage instruction	For continuous use, store undiluted antibody at 2-8°C for up to a week. For long-term storage, aliquot and store at -20°C or below. Storage in frost free freezers is not recommended. Avoid repeated freeze/thaw cycles. Suggest spin the vial prior to opening. The antibody solution should be gently mixed before use.
Note	For laboratory research only, not for drug, diagnostic or other use.

Bioinformation

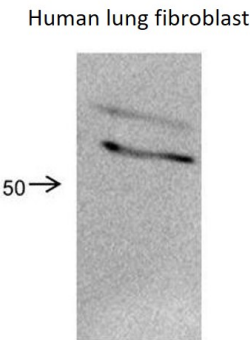
Gene Symbol	CRISPLD2
Gene Full Name	cysteine-rich secretory protein LCCL domain containing 2
Function	Promotes matrix assembly. [UniProt]
Calculated Mw	56 kDa
Cellular Localization	Secreted. [UniProt]

Images



ARG40152 anti-CRISPLD2 antibody WB image

Western blot: Jurkat cell lysate stained with ARG40152 anti-CRISPLD2 antibody at 0.2 - 1 µg/ml dilution.



ARG40152 anti-CRISPLD2 antibody WB image

Western blot: 40 µg of Human lung fibroblast cell lysate stained with ARG40152 anti-CRISPLD2 antibody at 1: 2000 dilution.