

ARG40154 anti-SERPINB13 antibody

Package: 50 µl
Store at: -20°C

Summary

Product Description	Rabbit Polyclonal antibody recognizes SERPINB13
Tested Reactivity	Hu
Predict Reactivity	Ms, Rat, Cow, Dog, Gpig, Hrs, Rb
Tested Application	WB
Host	Rabbit
Clonality	Polyclonal
Isotype	IgG
Target Name	SERPINB13
Species	Human
Immunogen	Synthetic peptide around the N-terminal region of Human SERPINB13. (within the following region: RLFGEKTYLFLQKYLDYVEKYYHASLEPVDVFVNAADESRKKINSWVESKT)
Conjugation	Un-conjugated
Alternate Names	Peptidase inhibitor 13; headpin; HaCaT UV-repressible serpin; Hurpin; Proteinase inhibitor 13; HUR7; HSHUR7SEQ; Serpin B13; PI13; Headpin; PI-13

Application Instructions

Predict Reactivity Note	Predicted Homology Based On Immunogen Sequence: Cow: 100%; Dog: 100%; Guinea Pig: 93%; Horse: 100%; Mouse: 100%; Rabbit: 86%; Rat: 100%				
Application table	<table> <tr> <th>Application</th><th>Dilution</th></tr> <tr> <td>WB</td><td>0.2 - 1 µg/ml</td></tr> </table>	Application	Dilution	WB	0.2 - 1 µg/ml
Application	Dilution				
WB	0.2 - 1 µg/ml				
Application Note	* The dilutions indicate recommended starting dilutions and the optimal dilutions or concentrations should be determined by the scientist.				
Positive Control	COLO205				

Properties

Form	Liquid
Purification	Affinity purified.
Buffer	PBS, 0.09% (w/v) Sodium azide and 2% Sucrose.
Preservative	0.09% (w/v) Sodium azide
Stabilizer	2% Sucrose
Concentration	Batch dependent: 0.5 - 1 mg/ml
Storage instruction	For continuous use, store undiluted antibody at 2-8°C for up to a week. For long-term storage, aliquot and store at -20°C or below. Storage in frost free freezers is not recommended. Avoid repeated

freeze/thaw cycles. Suggest spin the vial prior to opening. The antibody solution should be gently mixed before use.

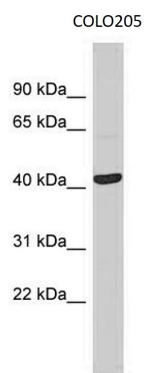
Note

For laboratory research only, not for drug, diagnostic or other use.

Bioinformation

Gene Symbol	SERPINB13
Gene Full Name	serpin peptidase inhibitor, clade B (ovalbumin), member 13
Function	May play a role in the proliferation or differentiation of keratinocytes. [UniProt]
Calculated Mw	44 kDa
Cellular Localization	Cytoplasm. [UniProt]

Images



ARG40154 anti-SERPINB13 antibody WB image

Western blot: COLO205 cell lysate stained with ARG40154 anti-SERPINB13 antibody at 0.2 - 1 µg/ml dilution.