

## ARG40185 anti-CD152 / CTLA4 antibody

Package: 100 µl  
Store at: -20°C

### Summary

|                     |   |
|---------------------|---|
| Product Description | Rabbit Polyclonal antibody recognizes CD152 / CTLA4   |
| Tested Reactivity   | Hu, Ms, Rat   |
| Tested Application  | WB  |
| Host                | Rabbit  |
| Clonality           | Polyclonal  |
| Isotype             | IgG   |
| Target Name         | CD152 / CTLA4   |
| Species             | Human   |
| Immunogen           | Recombinant fusion protein corresponding to aa. 49-223 of Human CD152 / CTLA4 (NP_005205.2).  |
| Conjugation         | Un-conjugated   |
| Alternate Names     | GRD4; CTLA-4; CELIAC3; CD; Cytotoxic T-lymphocyte-associated antigen 4; CD152; GSE; CD antigen CD152; Cytotoxic T-lymphocyte protein 4; ALPS5; IDDM12 |

### Application Instructions

|                   |  |                |
|-------------------|--|----------------|
| Application table | Application  | Dilution       |
|                   | WB   | 1:500 - 1:2000 |
| Application Note  | * The dilutions indicate recommended starting dilutions and the optimal dilutions or concentrations should be determined by the scientist. |                |

### Properties

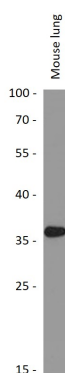
|                     |   |
|---------------------|---|
| Form                | Liquid  |
| Purification        | Affinity purified.  |
| Buffer              | PBS (pH 7.3), 0.02% Sodium azide and 50% Glycerol.  |
| Preservative        | 0.02% Sodium azide  |
| Stabilizer          | 50% Glycerol  |
| Storage instruction | For continuous use, store undiluted antibody at 2-8°C for up to a week. For long-term storage, aliquot and store at -20°C. Storage in frost free freezers is not recommended. Avoid repeated freeze/thaw cycles. Suggest spin the vial prior to opening. The antibody solution should be gently mixed before use. |
| Note                | For laboratory research only, not for drug, diagnostic or other use.  |

### Bioinformation

|             |       |
|-------------|-------|
| Gene Symbol | CTLA4 |
|-------------|-------|

|                       |   |
|-----------------------|---|
| Gene Full Name        | cytotoxic T-lymphocyte-associated protein 4   |
| Background            | This gene is a member of the immunoglobulin superfamily and encodes a protein which transmits an inhibitory signal to T cells. The protein contains a V domain, a transmembrane domain, and a cytoplasmic tail. Alternate transcriptional splice variants, encoding different isoforms, have been characterized. The membrane-bound isoform functions as a homodimer interconnected by a disulfide bond, while the soluble isoform functions as a monomer. Mutations in this gene have been associated with insulin-dependent diabetes mellitus, Graves disease, Hashimoto thyroiditis, celiac disease, systemic lupus erythematosus, thyroid-associated orbitopathy, and other autoimmune diseases. [provided by RefSeq, Jul 2008] |
| Function              | Inhibitory receptor acting as a major negative regulator of T-cell responses. The affinity of CTLA4 for its natural B7 family ligands, CD80 and CD86, is considerably stronger than the affinity of their cognate stimulatory coreceptor CD28. [UniProt]  |
| Calculated Mw         | 25 kDa  |
| PTM                   | N-glycosylation is important for dimerization.<br><br>Phosphorylation at Tyr-201 prevents binding to the AP-2 adapter complex, blocks endocytosis, and leads to retention of CTLA4 on the cell surface. [UniProt]   |
| Cellular Localization | Cell membrane, Single-pass type I membrane protein. [UniProt]   |

## Images



ARG40185 anti-CD152 / CTLA4 antibody WB image

Western blot: 25 µg of Mouse lung lysate stained with ARG40185 anti-CD152 / CTLA4 antibody at 1:1000 dilution.