

## ARG40206 anti-Annexin A1 antibody

Package: 50 µg  
Store at: -20°C

### Summary

Product Description	Rabbit Polyclonal antibody recognizes Annexin A1
Tested Reactivity	Hu, Rat, Mk
Tested Application	IHC-P, WB
Host	Rabbit
Clonality	Polyclonal
Isotype	IgG
Target Name	Annexin A1
Species	Human
Immunogen	Recombinant protein corresponding to A2-N346 of Human Annexin A1.
Conjugation	Un-conjugated
Alternate Names	ANX1; Calpactin II; Phospholipase A2 inhibitory protein; Chromobindin-9; LPC1; Annexin-1; Annexin A1; Lipocortin I; Annexin I; p35; Calpactin-2

### Application Instructions

Application table	Application	Dilution
	IHC-P	0.5 - 1 µg/ml
	WB	0.1 - 0.5 µg/ml
Application Note	IHC-P: Antigen Retrieval: By heat mediation. * The dilutions indicate recommended starting dilutions and the optimal dilutions or concentrations should be determined by the scientist.	

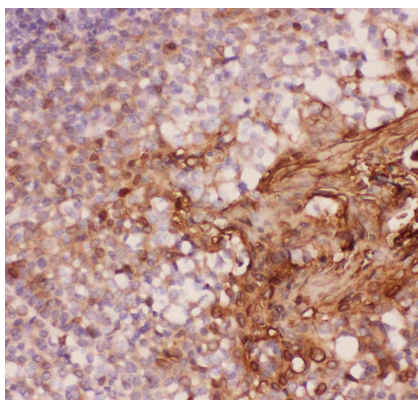
### Properties

Form	Liquid
Purification	Affinity purification with immunogen.
Buffer	0.9% NaCl, 0.2% Na <sub>2</sub> HPO <sub>4</sub> , 0.05% Sodium azide and 5% BSA.
Preservative	0.05% Sodium azide
Stabilizer	5% BSA
Concentration	0.5 mg/ml
Storage instruction	For continuous use, store undiluted antibody at 2-8°C for up to a week. For long-term storage, aliquot and store at -20°C or below. Storage in frost free freezers is not recommended. Avoid repeated freeze/thaw cycles. Suggest spin the vial prior to opening. The antibody solution should be gently mixed before use.
Note	For laboratory research only, not for drug, diagnostic or other use.

## Bioinformation

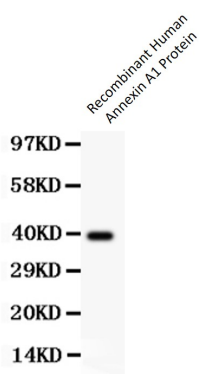
Gene Symbol	ANXA1
Gene Full Name	annexin A1
Background	This gene encodes a membrane-localized protein that binds phospholipids. This protein inhibits phospholipase A2 and has anti-inflammatory activity. Loss of function or expression of this gene has been detected in multiple tumors. [provided by RefSeq, Dec 2014]
Function	Calcium/phospholipid-binding protein which promotes membrane fusion and is involved in exocytosis. This protein regulates phospholipase A2 activity. It seems to bind from two to four calcium ions with high affinity. [UniProt]
Calculated Mw	39 kDa
PTM	Phosphorylated by protein kinase C, EGFR and TRPM7 (PubMed:2457390, PubMed:15485879). Phosphorylated in response to EGF treatment (PubMed:2532504).  Sumoylated. [UniProt]
Cellular Localization	Endosome; Nucleus; Plasma membrane; Secreted. [UniProt]

## Images



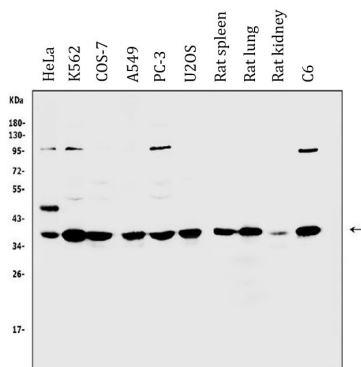
ARG40206 anti-Annexin A1 antibody IHC-P image

Immunohistochemistry: Paraffin-embedded Human tonsil stained with ARG40206 anti-Annexin A1 antibody.



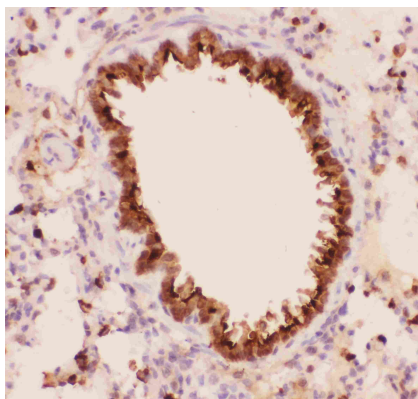
ARG40206 anti-Annexin A1 antibody WB image

Western blot: 0.5 ng of Recombinant Human Annexin A1 Protein stained with ARG40206 anti-Annexin A1 antibody at 0.5 µg/ml dilution.



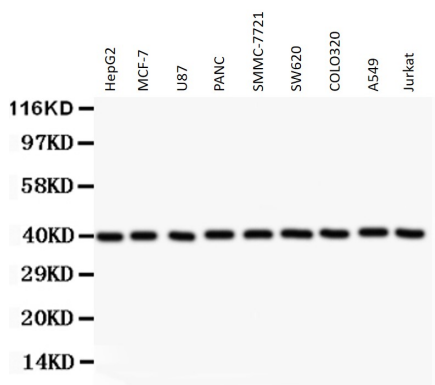
ARG40206 anti-Annexin A1 antibody WB image

Western blot: 30 µg of sample under reducing conditions. HeLa, K562, COS-7, A549, PC-3, U2OS, Rat spleen, Rat lung, Rat kidney and C6 whole cell lysates stained with ARG40206 anti-Annexin A1 antibody at 0.5 µg/ml dilution, overnight at 4°C.



ARG40206 anti-Annexin A1 antibody IHC-P image

Immunohistochemistry: Paraffin-embedded Rat lung stained with ARG40206 anti-Annexin A1 antibody.



ARG40206 anti-Annexin A1 antibody WB image

Western blot: 40 µg of HepG2, MCF-7, U87, PANC, SMMC-7721, SW620, COLO320, A549 and Jurkat whole cell lysates stained with ARG40206 anti-Annexin A1 antibody at 0.5 µg/ml dilution.