

ARG40226
anti-Cytokeratin 10 antibodyPackage: 100 µl
Store at: -20°C

Summary

Product Description	Rabbit Polyclonal antibody recognizes Cytokeratin 10
Tested Reactivity	Hu, Ms, Rat
Tested Application	ICC/IF, IHC-P, WB
Host	Rabbit
Clonality	Polyclonal
Isotype	IgG
Target Name	Cytokeratin 10
Species	Human
Immunogen	Synthetic peptide derived from Human Cytokeratin 10.
Conjugation	Un-conjugated
Alternate Names	KPP; K10; CK-10; BIE; Keratin, type I cytoskeletal 10; Cytokeratin-10; CK10; BCIE; Keratin-10; EHK

Application Instructions

Application table	Application	Dilution
	ICC/IF	1:50 - 1:200
	IHC-P	1:50 - 1:200
	WB	1:500 - 1:2000
Application Note	* The dilutions indicate recommended starting dilutions and the optimal dilutions or concentrations should be determined by the scientist.	
Positive Control	A431	
Observed Size	~ 55 kDa	

Properties

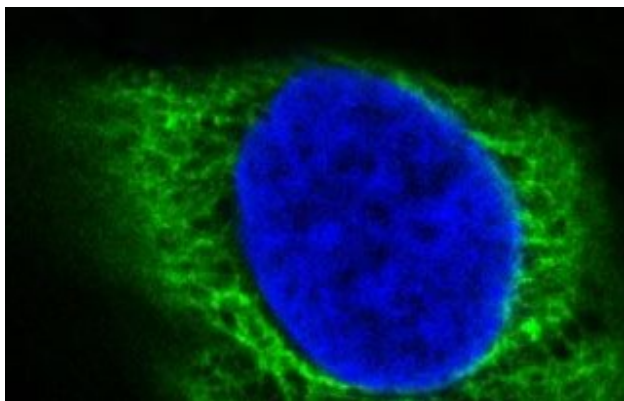
Form	Liquid
Purification	Affinity purified.
Buffer	PBS (pH 7.4), 0.02% Sodium azide and 50% Glycerol.
Preservative	0.02% Sodium azide
Stabilizer	50% Glycerol
Storage instruction	For continuous use, store undiluted antibody at 2-8°C for up to a week. For long-term storage, aliquot and store at -20°C. Storage in frost free freezers is not recommended. Avoid repeated freeze/thaw cycles. Suggest spin the vial prior to opening. The antibody solution should be gently mixed before use.

Note For laboratory research only, not for drug, diagnostic or other use.

Bioinformation

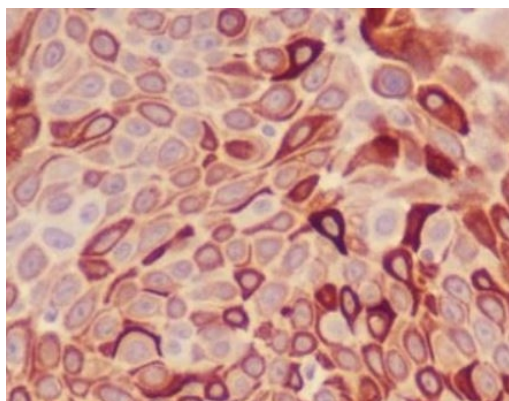
Gene Symbol	KRT10
Gene Full Name	keratin 10, type I
Background	Cytokeratin 10 is a member of the type I (acidic) cytokeratin family, which belongs to the superfamily of intermediate filament (IF) proteins. Keratins are heteropolymeric structural proteins which form the intermediate filament. These filaments, along with actin microfilaments and microtubules, compose the cytoskeleton of epithelial cells. Mutations in this gene are associated with epidermolytic hyperkeratosis. This gene is located within a cluster of keratin family members on chromosome 17q21. [provided by RefSeq, Jul 2008]
Function	Cytokeratin 10 plays a role in the establishment of the epidermal barrier on plantar skin. (Microbial infection) Acts as a mediator of <i>S.aureus</i> adherence to desquamated nasal epithelial cells via clfB, and hence may play a role in nasal colonization. (Microbial infection) Binds <i>S.pneumoniae</i> PsrP, mediating adherence of the bacteria to lung cell lines. Reduction of levels of KRT10 keratin decrease adherence, overexpression increases adherence. Neither protein has to be glycosylated for the interaction to occur. [UniProt]
Calculated Mw	59 kDa
Cellular Localization	Secreted, extracellular space. Note=Localized on the surface of desquamated nasal epithelial cells. [UniProt]

Images



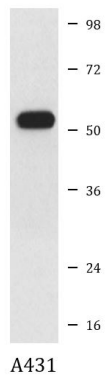
ARG40226 anti-Cytokeratin 10 antibody ICC/IF image

Immunofluorescence: HaCaT cells stained with ARG40226 anti-Cytokeratin 10 antibody.



ARG40226 anti-Cytokeratin 10 antibody IHC-P image

Immunohistochemistry: Paraffin-embedded Human bladder stained with ARG40226 anti-Cytokeratin 10 antibody.



ARG40226 anti-Cytokeratin 10 antibody WB image

Western blot: A431 cell lysate stained with ARG40226 anti-Cytokeratin 10 antibody.