

ARG40245 anti-TFEB antibody

Package: 100 µl
Store at: -20°C

Summary

Product Description	Rabbit Polyclonal antibody recognizes TFEB
Tested Reactivity	Hu, Ms, Rat
Tested Application	ICC/IF, IHC-P, WB
Host	Rabbit
Clonality	Polyclonal
Isotype	IgG
Target Name	TFEB
Species	Human
Immunogen	Recombinant fusion protein corresponding to aa. 1-220 of Human TFEB (NP_009093.1).
Conjugation	Un-conjugated
Alternate Names	Class E basic helix-loop-helix protein 35; BHLHE35; ALPHATFEB; bHLHe35; TCFEb; Transcription factor EB

Application Instructions

Application table	Application	Dilution
	ICC/IF	1:50 - 1:100
	IHC-P	1:50 - 1:100
	WB	1:500 - 1:1000
Application Note	* The dilutions indicate recommended starting dilutions and the optimal dilutions or concentrations should be determined by the scientist.	
Positive Control	Rat spleen, Mouse kidney and Raji	
Observed Size	~ 67 kDa	

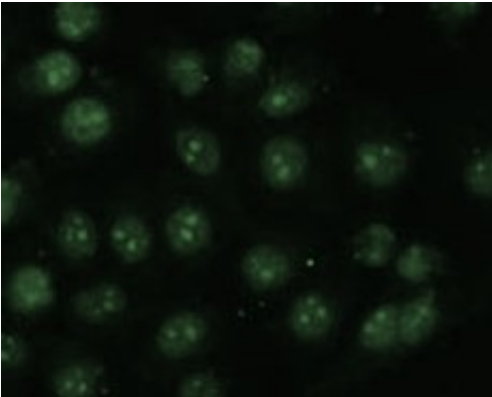
Properties

Form	Liquid
Purification	Affinity purified.
Buffer	PBS (pH 7.3), 0.02% Sodium azide and 50% Glycerol.
Preservative	0.02% Sodium azide
Stabilizer	50% Glycerol
Storage instruction	For continuous use, store undiluted antibody at 2-8°C for up to a week. For long-term storage, aliquot and store at -20°C. Storage in frost free freezers is not recommended. Avoid repeated freeze/thaw cycles. Suggest spin the vial prior to opening. The antibody solution should be gently mixed before use.

Bioinformation

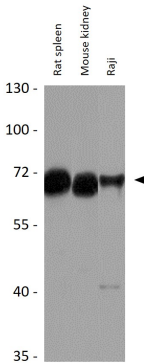
Gene Symbol	TFEB
Gene Full Name	transcription factor EB
Function	Transcription factor that specifically recognizes and binds E-box sequences (5'-CANNTG-3'). Efficient DNA-binding requires dimerization with itself or with another MIT/TFE family member such as TFE3 or MITF. In association with TFE3, activates the expression of CD40L in T-cells, thereby playing a role in T-cell-dependent antibody responses in activated CD4(+) T-cells and thymus-dependent humoral immunity. Specifically recognizes and binds the CLEAR-box sequence (5'-GTCACGTGAC-3') present in the regulatory region of many lysosomal genes, leading to activate their expression. It thereby plays a central role in expression of lysosomal genes. Acts as a positive regulator of autophagy by promoting expression of genes involved in autophagy. Specifically recognizes the gamma-E3 box, a subset of E-boxes, present in the heavy-chain immunoglobulin enhancer. Plays a role in the signal transduction processes required for normal vascularization of the placenta. [UniProt]
Calculated Mw	53 kDa
PTM	Sumoylated; does not affect dimerization with MITF. [UniProt]
Cellular Localization	Cytoplasm. Nucleus. Note=Mainly present in the cytoplasm (PubMed:23434374). Under aberrant lysosomal storage conditions, it translocates from the cytoplasm to the nucleus (PubMed:23434374). In macrophages, translocates into the nucleus upon live S.enterica infection (PubMed:27184844). [UniProt]

Images



ARG40245 anti-TFEB antibody ICC/IF image

Immunofluorescence: HeLa cells stained with ARG40245 anti-TFEB antibody at 1:100 dilution.



ARG40245 anti-TFEB antibody WB image

Western blot: 25 ug of Rat spleen, Mouse kidney and Raji cell lysates stained with ARG40245 anti-TFEB antibody at 1:1000 dilution.