

ARG40262 anti-GLUT3 antibody

Package: 100 µl
Store at: -20°C

Summary

Product Description	Rabbit Polyclonal antibody recognizes GLUT3
Tested Reactivity	Hu, Ms, Rat
Tested Application	IHC-P, WB
Host	Rabbit
Clonality	Polyclonal
Isotype	IgG
Target Name	GLUT3
Species	Human
Immunogen	Synthetic peptide within aa. 150-250 of Human GLUT3 (NP_008862.1).
Conjugation	Un-conjugated
Alternate Names	Solute carrier family 2, facilitated glucose transporter member 3; GLUT-3; Glucose transporter type 3, brain; GLUT3

Application Instructions

Application table	Application	Dilution
	IHC-P	1:50 - 1:200
	WB	1:500 - 1:2000
Application Note	* The dilutions indicate recommended starting dilutions and the optimal dilutions or concentrations should be determined by the scientist.	
Positive Control	U87	
Observed Size	53 kDa	

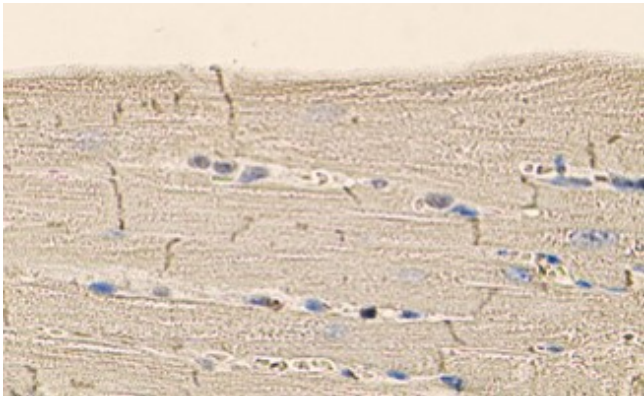
Properties

Form	Liquid
Purification	Affinity purified.
Buffer	PBS (pH 7.3), 0.02% Sodium azide and 50% Glycerol.
Preservative	0.02% Sodium azide
Stabilizer	50% Glycerol
Storage instruction	For continuous use, store undiluted antibody at 2-8°C for up to a week. For long-term storage, aliquot and store at -20°C. Storage in frost free freezers is not recommended. Avoid repeated freeze/thaw cycles. Suggest spin the vial prior to opening. The antibody solution should be gently mixed before use.
Note	For laboratory research only, not for drug, diagnostic or other use.

Bioinformation

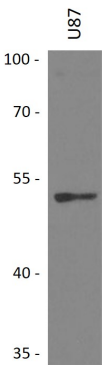
Gene Symbol	SLC2A3
Gene Full Name	solute carrier family 2 (facilitated glucose transporter), member 3
Function	Facilitative glucose transporter. Probably a neuronal glucose transporter. [UniProt]
Calculated Mw	54 kDa
Cellular Localization	Cell membrane; Multi-pass membrane protein. [UniProt]

Images



ARG40262 anti-GLUT3 antibody IHC-P image

Immunohistochemistry: Paraffin-embedded Mouse heart stained with ARG40262 anti-GLUT3 antibody.



ARG40262 anti-GLUT3 antibody WB image

Western blot: 25 µg of U87 cell lysate stained with ARG40262 anti-GLUT3 antibody at 1:1000 dilution.