

## ARG40272 anti-ADCY8 antibody

Package: 100 µl  
Store at: -20°C

### Summary

Product Description	Rabbit Polyclonal antibody recognizes ADCY8
Tested Reactivity	Hu
Predict Reactivity	Ms, Rat
Tested Application	FACS, WB
Host	Rabbit
Clonality	Polyclonal
Isotype	IgG
Target Name	ADCY8
Species	Human
Immunogen	KLH-conjugated synthetic peptide between aa. 946-972 of Human ADCY8.
Conjugation	Un-conjugated
Alternate Names	ADCY3; Ca; Adenylate cyclase type VIII; Adenylyl cyclase 8; Adenylate cyclase type 8; 2+; EC 4.6.1.1; AC8; HBAC1; ATP pyrophosphate-lyase 8

### Application Instructions

Application table	Application	Dilution
	FACS	1:10 - 1:50
	WB	1:1000
Application Note	In addition to WB and FACS for human, ARG40272 anti-ADCY8 antibody is also guaranteed for use in IHC-P on mouse. * The dilutions indicate recommended starting dilutions and the optimal dilutions or concentrations should be determined by the scientist.	
Positive Control	Human brain	
Observed Size	~ 140 kDa	

### Properties

Form	Liquid
Purification	Purification with Protein A and immunogen peptide.
Buffer	PBS and 0.09% (W/V) Sodium azide.
Preservative	0.09% (W/V) Sodium azide
Storage instruction	For continuous use, store undiluted antibody at 2-8°C for up to a week. For long-term storage, aliquot and store at -20°C or below. Storage in frost free freezers is not recommended. Avoid repeated freeze/thaw cycles. Suggest spin the vial prior to opening. The antibody solution should be gently mixed

before use.

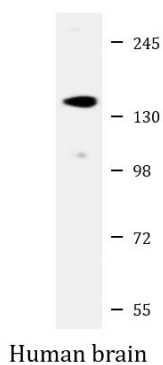
#### Note

For laboratory research only, not for drug, diagnostic or other use.

## Bioinformation

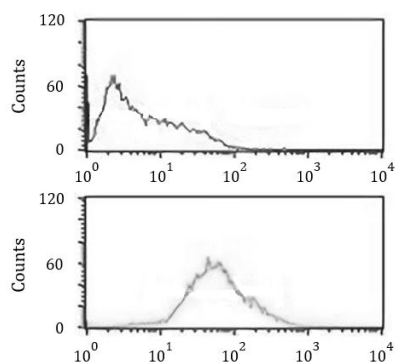
Gene Symbol	ADCY8
Gene Full Name	adenylate cyclase 8 (brain)
Background	Adenylate cyclase is a membrane bound enzyme that catalyses the formation of cyclic AMP from ATP. The enzymatic activity is under the control of several hormones, and different polypeptides participate in the transduction of the signal from the receptor to the catalytic moiety. Stimulatory or inhibitory receptors (Rs and Ri) interact with G proteins (Gs and Gi) that exhibit GTPase activity and they modulate the activity of the catalytic subunit of the adenylyl cyclase [provided by RefSeq, Jul 2008]
Function	This is a membrane-bound, calcium-stimulable adenylyl cyclase. May be involved in learning, in memory and in drug dependence (By similarity). [UniProt]
Calculated Mw	140 kDa
Cellular Localization	Membrane; Multi-pass membrane protein. [UniProt]

## Images



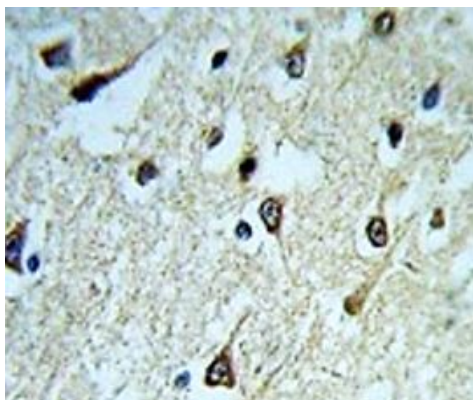
ARG40272 anti-ADCY8 antibody WB image

Western blot: 20 µg of Human brain lysate stained with ARG40272 anti-ADCY8 antibody at 1:1000 dilution.



ARG40272 anti-ADCY8 antibody FACS image

Flow Cytometry: HL-60 cells stained with ARG40272 anti-ADCY8 antibody (bottom histogram) or without primary antibody as control (top histogram), followed by incubation with FITC labelled secondary antibody.



ARG40272 anti-ADCY8 antibody IHC-P image

Immunohistochemistry: Formalin-fixed and paraffin-embedded  
Mouse brain tissue stained with ARG40272 anti-ADCY8 antibody at  
1:70 dilution.