

ARG40288 anti-Calpain 1 antibody

Package: 50 µg
Store at: -20°C

Summary

Product Description	Goat Polyclonal antibody recognizes Calpain 1
Tested Reactivity	Hu
Tested Application	IHC-P, WB
Host	Goat
Clonality	Polyclonal
Isotype	IgG
Target Name	Calpain 1
Species	Human
Immunogen	Synthetic peptide around the internal region of Human Calpain 1. (NP_005177.2. C-SEKSAGTVELDD)
Conjugation	Un-conjugated
Alternate Names	EC 3.4.22.52; CANP1; Calpain-1 large subunit; Calpain-1 catalytic subunit; Calpain mu-type; muCANP; Cell proliferation-inducing gene 30 protein; Micromolar-calpain; CANP 1; CANP; muCL; CANPL1; Calcium-activated neutral proteinase 1

Application Instructions

Application table	Application	Dilution
	IHC-P	5 µg/ml
	WB	0.3 - 1 µg/ml
Application Note	WB: Recommend incubate at RT for 1h. IHC-P: Antigen Retrieval: Steam tissue section in Citrate buffer (pH 6.0). * The dilutions indicate recommended starting dilutions and the optimal dilutions or concentrations should be determined by the scientist.	
Observed Size	~ 80 kDa	

Properties

Form	Liquid
Purification	Affinity purified
Buffer	Tris saline (pH 7.3), 0.02% Sodium azide and 0.5% BSA.
Preservative	0.02% Sodium azide
Stabilizer	0.5% BSA
Concentration	0.5 mg/ml
Storage instruction	For continuous use, store undiluted antibody at 2-8°C for up to a week. For long-term storage, aliquot and store at -20°C or below. Storage in frost free freezers is not recommended. Avoid repeated

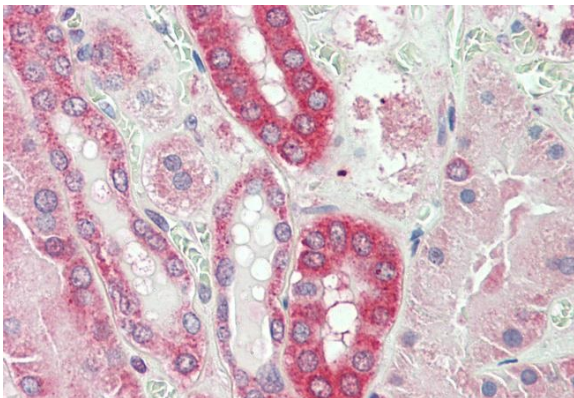
freeze/thaw cycles. Suggest spin the vial prior to opening. The antibody solution should be gently mixed before use.

Note For laboratory research only, not for drug, diagnostic or other use.

Bioinformation

Gene Symbol	CAPN1
Gene Full Name	calpain 1, (mu/I) large subunit
Background	The calpains, calcium-activated neutral proteases, are nonlysosomal, intracellular cysteine proteases. The mammalian calpains include ubiquitous, stomach-specific, and muscle-specific proteins. The ubiquitous enzymes consist of heterodimers with distinct large, catalytic subunits associated with a common small, regulatory subunit. This gene encodes the large subunit of the ubiquitous enzyme, calpain 1. Several transcript variants encoding two different isoforms have been found for this gene. [provided by RefSeq, Nov 2010]
Function	Calcium-regulated non-lysosomal thiol-protease which catalyze limited proteolysis of substrates involved in cytoskeletal remodeling and signal transduction. [UniProt]
Calculated Mw	82 kDa
PTM	Undergoes calcium-induced successive autoproteolytic cleavages that generate a membrane-bound 78 kDa active form and an intracellular 75 kDa active form. Calpastatin reduces with high efficiency the transition from 78 kDa to 75 kDa calpain forms. [UniProt]
Cellular Localization	Cytoplasm. Cell membrane. Note=Translocates to the plasma membrane upon Ca(2+) binding. In granular keratinocytes and in lower corneocytes, colocalizes with FLG and FLG2 (PubMed:21531719). [UniProt]

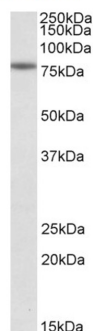
Images



ARG40288 anti-Calpain 1 antibody IHC-P image

Immunohistochemistry: Paraffin-embedded Human kidney tissue. Antigen Retrieval: Steam tissue section in Citrate buffer (pH 6.0). The tissue section was stained with ARG40288 anti-Calpain 1 antibody at 5 µg/ml dilution followed by AP-staining.

Human spleen



ARG40288 anti-Calpain 1 antibody WB image

Western blot: 35 µg of Human spleen lysate (in RIPA buffer) stained with ARG40288 anti-Calpain 1 antibody at 0.3 µg/ml dilution and incubated at RT for 1 hour.