

ARG40348
anti-INPP1 antibodyPackage: 100 µl
Store at: -20°C

Summary

Product Description	Rabbit Polyclonal antibody recognizes INPP1
Tested Reactivity	Hu
Tested Application	WB
Host	Rabbit
Clonality	Polyclonal
Isotype	IgG
Target Name	INPP1
Species	Human
Immunogen	Recombinant fusion protein corresponding to aa. 1-180 of Human INPP1 (NP_002185.1).
Conjugation	Un-conjugated
Alternate Names	IPP; EC 3.1.3.57; IPPase; Inositol polyphosphate 1-phosphatase

Application Instructions

Application table	Application	Dilution
	WB	1:500 - 1:2000
Application Note	* The dilutions indicate recommended starting dilutions and the optimal dilutions or concentrations should be determined by the scientist.	
Positive Control	U-251MG	
Observed Size	48 kDa	

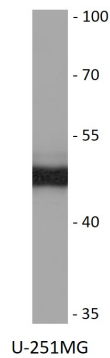
Properties

Form	Liquid
Purification	Affinity purified.
Buffer	PBS (pH 7.3), 0.02% Sodium azide and 50% Glycerol.
Preservative	0.02% Sodium azide
Stabilizer	50% Glycerol
Storage instruction	For continuous use, store undiluted antibody at 2-8°C for up to a week. For long-term storage, aliquot and store at -20°C. Storage in frost free freezers is not recommended. Avoid repeated freeze/thaw cycles. Suggest spin the vial prior to opening. The antibody solution should be gently mixed before use.
Note	For laboratory research only, not for drug, diagnostic or other use.

Bioinformation

Gene Symbol	INPP1
Gene Full Name	inositol polyphosphate-1-phosphatase
Background	This gene encodes the enzyme inositol polyphosphate-1-phosphatase, one of the enzymes involved in phosphatidylinositol signaling pathways. This enzyme removes the phosphate group at position 1 of the inositol ring from the polyphosphates inositol 1,4-bisphosphate and inositol 1,3,4-trisphosphate. [provided by RefSeq, Jul 2008]
Calculated Mw	44 kDa

Images



ARG40348 anti-INPP1 antibody WB image

Western blot: 25 µg of U-251MG cell lysate stained with ARG40348 anti-INPP1 antibody at 1:1000 dilution.