

## ARG40360 anti-RAB27B antibody

Package: 100 µl  
Store at: -20°C

### Summary

Product Description	Rabbit Polyclonal antibody recognizes RAB27B
Tested Reactivity	Hu
Tested Application	FACS, WB
Host	Rabbit
Clonality	Polyclonal
Isotype	IgG
Target Name	RAB27B
Species	Human
Immunogen	KLH-conjugated synthetic peptide corresponding to aa. 186-215 of Human RAB27B.
Conjugation	Un-conjugated
Alternate Names	Ras-related protein Rab-27B; C25KG

### Application Instructions

Application table	Application	Dilution
	FACS	1:10 - 1:50
	WB	1:1000
Application Note	* The dilutions indicate recommended starting dilutions and the optimal dilutions or concentrations should be determined by the scientist.	
Positive Control	NCI-H460	
Observed Size	~ 26 kDa	

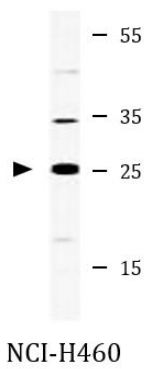
### Properties

Form	Liquid
Purification	Purification with Protein A and immunogen peptide.
Buffer	PBS and 0.09% (W/V) Sodium azide.
Preservative	0.09% (W/V) Sodium azide.
Storage instruction	For continuous use, store undiluted antibody at 2-8°C for up to a week. For long-term storage, aliquot and store at -20°C or below. Storage in frost free freezers is not recommended. Avoid repeated freeze/thaw cycles. Suggest spin the vial prior to opening. The antibody solution should be gently mixed before use.
Note	For laboratory research only, not for drug, diagnostic or other use.

Bioinformation

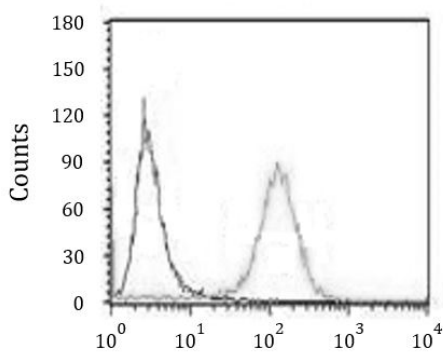
Gene Symbol	RAB27B
Gene Full Name	RAB27B, member RAS oncogene family
Background	Members of the Rab protein family, including RAB27B, are prenylated, membrane-bound proteins involved in vesicular fusion and trafficking (Chen et al., 1997 [PubMed 9066979]).[supplied by OMIM, Nov 2010]
Function	May be involved in targeting uroplakins to urothelial apical membranes. [UniProt]
Calculated Mw	25 kDa
Cellular Localization	Membrane; Lipid-anchor. [UniProt]

Images



ARG40360 anti-RAB27B antibody WB image

Western blot: 35 µg of NCI-H460 cell lysate stained with ARG40360 anti-RAB27B antibody.



ARG40360 anti-RAB27B antibody FACS image

Flow Cytometry: NCI-H460 cells stained with ARG40360 anti-RAB27B antibody (right histogram) or without primary antibody as control (left histogram), followed by incubation with FITC labelled secondary antibody.