

## ARG40368 anti-Cytokeratin 5 antibody

Package: 50 µg  
Store at: -20°C

### Summary

Product Description	Rabbit Polyclonal antibody recognizes Cytokeratin 5
Tested Reactivity	Hu
Predict Reactivity	Ms
Tested Application	IHC-P, WB
Host	Rabbit
Clonality	Polyclonal
Isotype	IgG
Target Name	Cytokeratin 5
Species	Human
Immunogen	Synthetic peptide corresponding to aa. 286-317 of Human Cytokeratin 5. (KVELEAKVDALMDEINFMKMFDAELSQMQTH)
Conjugation	Un-conjugated
Alternate Names	DDD1; 58 kDa cytokeratin; Keratin, type II cytoskeletal 5; EBS2; Keratin-5; Cytokeratin-5; CK5; KRT5A; K5; CK-5; Type-II keratin Kb5; DDD

### Application Instructions

Application table	Application	Dilution
	IHC-P	0.5 - 1 µg/ml
	WB	0.1 - 0.5 µg/ml
Application Note	IHC-P: Antigen Retrieval: By heat mediation. * The dilutions indicate recommended starting dilutions and the optimal dilutions or concentrations should be determined by the scientist.	
Observed Size	62 kDa	

### Properties

Form	Liquid
Purification	Affinity purification with immunogen.
Buffer	0.2% Na <sub>2</sub> HPO <sub>4</sub> , 0.9% NaCl, 0.05% Sodium azide and 5% BSA.
Preservative	0.05% Sodium azide
Stabilizer	5% BSA
Concentration	0.5 mg/ml
Storage instruction	For continuous use, store undiluted antibody at 2-8°C for up to a week. For long-term storage, aliquot and store at -20°C or below. Storage in frost free freezers is not recommended. Avoid repeated

freeze/thaw cycles. Suggest spin the vial prior to opening. The antibody solution should be gently mixed before use.

Note

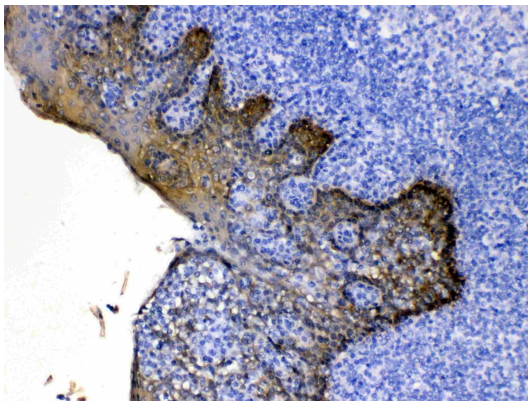
For laboratory research only, not for drug, diagnostic or other use.

## Bioinformation

---

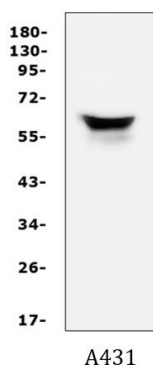
Gene Symbol	KRT5
Gene Full Name	keratin 5, type II
Background	Cytokeratin 5 is a member of the keratin gene family. The type II cytokeratins consist of basic or neutral proteins which are arranged in pairs of heterotypic keratin chains coexpressed during differentiation of simple and stratified epithelial tissues. This type II cytokeratin is specifically expressed in the basal layer of the epidermis with family member KRT14. Mutations in these genes have been associated with a complex of diseases termed epidermolysis bullosa simplex. The type II cytokeratins are clustered in a region of chromosome 12q12-q13. [provided by RefSeq, Jul 2008]
Calculated Mw	62 kDa

## Images



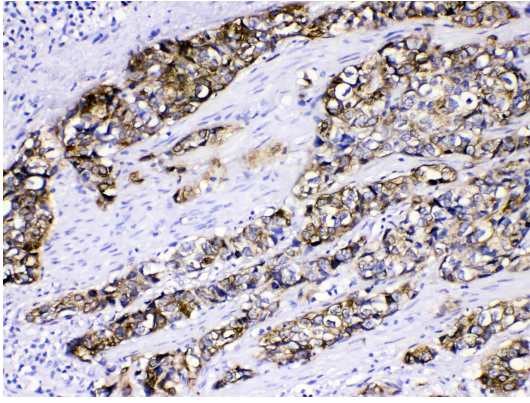
ARG40368 anti-Cytokeratin 5 antibody IHC-P image

Immunohistochemistry: Paraffin-embedded Human tonsil stained with ARG40368 anti-Cytokeratin 5 antibody at 1 µg/ml dilution.



ARG40368 anti-Cytokeratin 5 antibody WB image

Western blot: 50 µg of sample under reducing conditions. A431 whole cell lysate stained with ARG40368 anti-Cytokeratin 5 antibody at 0.5 µg/ml dilution, overnight at 4°C.



ARG40368 anti-Cytokeratin 5 antibody IHC-P image

Immunohistochemistry: Paraffin-embedded Human oesophagus squama cancer tissue stained with ARG40368 anti-Cytokeratin 5 antibody at 1  $\mu$ g/ml dilution.