

ARG40371 anti-CD123 / IL3RA antibody

Package: 50 µg
Store at: -20°C

Summary

Product Description	Rabbit Polyclonal antibody recognizes CD123 / IL3RA
Tested Reactivity	Hu
Tested Application	WB
Host	Rabbit
Clonality	Polyclonal
Isotype	IgG
Target Name	CD123 / IL3RA
Species	Human
Immunogen	Synthetic peptide corresponding to aa. 135-151 of Human CD123 / IL3RA. (QYDLYLNVANRRQQYEC).
Conjugation	Un-conjugated
Alternate Names	IL-3R subunit alpha; CD123; CD antigen CD123; IL3RAY; IL-3R-alpha; IL3RY; IL3RX; IL3R; IL-3RA; IL-3 receptor subunit alpha; hIL-3Ra; Interleukin-3 receptor subunit alpha

Application Instructions

Application table	<table> <tr> <th>Application</th><th>Dilution</th></tr> <tr> <td>WB</td><td>0.1 - 0.5 µg/ml</td></tr> </table>	Application	Dilution	WB	0.1 - 0.5 µg/ml
Application	Dilution				
WB	0.1 - 0.5 µg/ml				
Application Note	* The dilutions indicate recommended starting dilutions and the optimal dilutions or concentrations should be determined by the scientist.				
Observed Size	45 kDa				

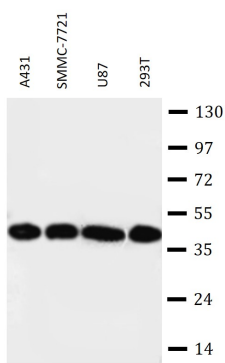
Properties

Form	Liquid
Purification	Affinity purification with immunogen.
Buffer	0.2% Na2HPO4, 0.9% NaCl, 0.05% Thimerosal, 0.05% Sodium azide and 5% BSA.
Preservative	0.05% Thimerosal and 0.05% Sodium azide
Stabilizer	5% BSA
Concentration	0.5 mg/ml
Storage instruction	For continuous use, store undiluted antibody at 2-8°C for up to a week. For long-term storage, aliquot and store at -20°C or below. Storage in frost free freezers is not recommended. Avoid repeated freeze/thaw cycles. Suggest spin the vial prior to opening. The antibody solution should be gently mixed before use.
Note	For laboratory research only, not for drug, diagnostic or other use.

Bioinformation

Gene Symbol	IL3RA
Gene Full Name	interleukin 3 receptor, alpha (low affinity)
Background	The protein encoded by this gene is an interleukin 3 specific subunit of a heterodimeric cytokine receptor. The receptor is comprised of a ligand specific alpha subunit and a signal transducing beta subunit shared by the receptors for interleukin 3 (IL3), colony stimulating factor 2 (CSF2/GM-CSF), and interleukin 5 (IL5). The binding of this protein to IL3 depends on the beta subunit. The beta subunit is activated by the ligand binding, and is required for the biological activities of IL3. This gene and the gene encoding the colony stimulating factor 2 receptor alpha chain (CSF2RA) form a cytokine receptor gene cluster in a X-Y pseudoautosomal region on chromosomes X or Y. Alternatively spliced transcript variants encoding distinct isoforms have been found. [provided by RefSeq, Jun 2012]
Function	This is a receptor for interleukin-3. [UniProt]
Calculated Mw	43 kDa
Cellular Localization	Membrane; Single-pass type I membrane protein. [UniProt]

Images



ARG40371 anti-CD123 / IL3RA antibody WB image

Western blot: A431, SMMC-7721, U87 and 293T cell lysates stained with ARG40371 anti-CD123 / IL3RA antibody.