

## ARG40383 anti-ITPKB antibody

Package: 100 µl  
Store at: -20°C

### Summary

Product Description	Rabbit Polyclonal antibody recognizes ITPKB
Tested Reactivity	Hu, Ms, Rat
Tested Application	WB
Host	Rabbit
Clonality	Polyclonal
Isotype	IgG
Target Name	ITPKB
Species	Human
Immunogen	KLH-conjugated synthetic peptide within the center region of Human ITPKB.
Conjugation	Un-conjugated
Alternate Names	IP3K B; Inositol-trisphosphate 3-kinase B; InsP 3-kinase B; IP3K-B; IP3-3KB; IP3KB; IP3 3-kinase B; EC 2.7.1.127; PIG37; IP3K; Inositol 1,4,5-trisphosphate 3-kinase B

### Application Instructions

Application table	Application	Dilution
	WB	1:500 - 1:1000
Application Note	* The dilutions indicate recommended starting dilutions and the optimal dilutions or concentrations should be determined by the scientist.	

### Properties

Form	Liquid
Purification	Affinity purification with immunogen.
Buffer	0.42% Potassium phosphate (pH 7.3), 0.87% NaCl, 0.01% Sodium azide and 30% Glycerol.
Preservative	0.01% Sodium azide
Stabilizer	30% Glycerol
Storage instruction	For continuous use, store undiluted antibody at 2-8°C for up to a week. For long-term storage, aliquot and store at -20°C. Storage in frost free freezers is not recommended. Avoid repeated freeze/thaw cycles. Suggest spin the vial prior to opening. The antibody solution should be gently mixed before use.
Note	For laboratory research only, not for drug, diagnostic or other use.

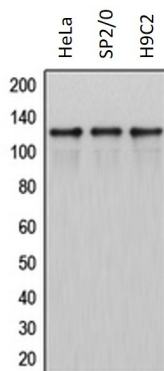
### Bioinformation

Gene Symbol	ITPKB
-------------	-------

Gene Full Name	inositol-trisphosphate 3-kinase B
Background	The protein encoded by this protein regulates inositol phosphate metabolism by phosphorylation of second messenger inositol 1,4,5-trisphosphate to Ins(1,3,4,5)P4. The activity of this encoded protein is responsible for regulating the levels of a large number of inositol polyphosphates that are important in cellular signaling. Both calcium/calmodulin and protein phosphorylation mechanisms control its activity. [provided by RefSeq, Jul 2008]
Calculated Mw	102 kDa

## Images

---



ARG40383 anti-ITPKB antibody WB image

Western blot: HeLa, SP2/O and H9C2 whole cell lysates stained with ARG40383 anti-ITPKB antibody.