

ARG40395 anti-Cytokeratin 5 antibody

Package: 100 µl
Store at: -20°C

Summary

Product Description	Rabbit Polyclonal antibody recognizes Cytokeratin 5
Tested Reactivity	Hu, Ms
Tested Application	ICC/IF, IHC-Fr, IHC-P, WB
Host	Rabbit
Clonality	Polyclonal
Isotype	IgG
Target Name	Cytokeratin 5
Species	Human
Immunogen	Synthetic peptide around the C-terminal region of Human Cytokeratin 5.
Conjugation	Un-conjugated
Alternate Names	DDD1; 58 kDa cytokeratin; Keratin, type II cytoskeletal 5; EBS2; Keratin-5; Cytokeratin-5; CK5; KRT5A; K5; CK-5; Type-II keratin Kb5; DDD

Application Instructions

Application table	Application	Dilution
	ICC/IF	1:50 - 1:200
	IHC-Fr	1:50 - 1:200
	IHC-P	1:50 - 1:200
	WB	1:500 - 1:2000
Application Note	* The dilutions indicate recommended starting dilutions and the optimal dilutions or concentrations should be determined by the scientist.	
Observed Size	~ 60 kDa	

Properties

Form	Liquid
Purification	Affinity purified.
Buffer	PBS (pH 7.4), 150 mM NaCl, 0.02% Sodium azide and 50% Glycerol.
Preservative	0.02% Sodium azide
Stabilizer	50% Glycerol
Storage instruction	For continuous use, store undiluted antibody at 2-8°C for up to a week. For long-term storage, aliquot and store at -20°C. Storage in frost free freezers is not recommended. Avoid repeated freeze/thaw cycles. Suggest spin the vial prior to opening. The antibody solution should be gently mixed before use.

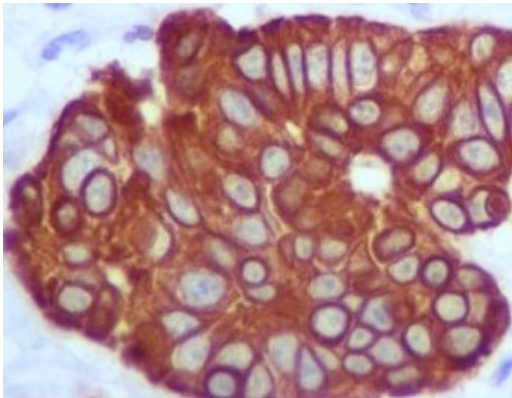
Note

For laboratory research only, not for drug, diagnostic or other use.

Bioinformation

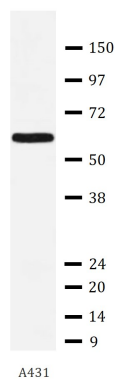
Gene Symbol	KRT5
Gene Full Name	keratin 5, type II
Background	Cytokeratin 5 is a member of the keratin gene family. The type II cytokeratins consist of basic or neutral proteins which are arranged in pairs of heterotypic keratin chains coexpressed during differentiation of simple and stratified epithelial tissues. This type II cytokeratin is specifically expressed in the basal layer of the epidermis with family member KRT14. Mutations in these genes have been associated with a complex of diseases termed epidermolysis bullosa simplex. The type II cytokeratins are clustered in a region of chromosome 12q12-q13. [provided by RefSeq, Jul 2008]
Calculated Mw	62 kDa

Images



ARG40395 anti-Cytokeratin 5 antibody IHC-P image

Immunohistochemistry: Paraffin-embedded Human urothelial carcinoma stained with ARG40395 anti-Cytokeratin 5 antibody.



ARG40395 anti-Cytokeratin 5 antibody WB image

Western blot: A431 cell lysate stained with ARG40395 anti-Cytokeratin 5 antibody.