

ARG40417 anti-GCM1 antibody

Package: 50 µl
Store at: -20°C

Summary

Product Description	Rabbit Polyclonal antibody recognizes GCM1
Tested Reactivity	Hu
Predict Reactivity	Ms, Rat, Dog
Tested Application	IHC-P, WB
Host	Rabbit
Clonality	Polyclonal
Isotype	IgG
Target Name	GCM1
Species	Human
Immunogen	Synthetic peptide around the N-terminal region of Human GCM1 (within the following region: MEPDDFDSSEDKELISWDINDVKLPQNVKKTDFQEWPDYAKHIYSSSEDK).
Conjugation	Un-conjugated
Alternate Names	GCMA; hGCMA; Glial cells missing homolog 1; Chorion-specific transcription factor GCMA; GCM motif protein 1

Application Instructions

Predict Reactivity Note	Predicted Homology Based On Immunogen Sequence: Mouse: 78%; Rat: 78%; Dog: 78%	
Application table	Application	Dilution
	IHC-P	Assay-dependent
	WB	1 µg/ml
Application Note	* The dilutions indicate recommended starting dilutions and the optimal dilutions or concentrations should be determined by the scientist.	
Observed Size	~ 53 kDa	

Properties

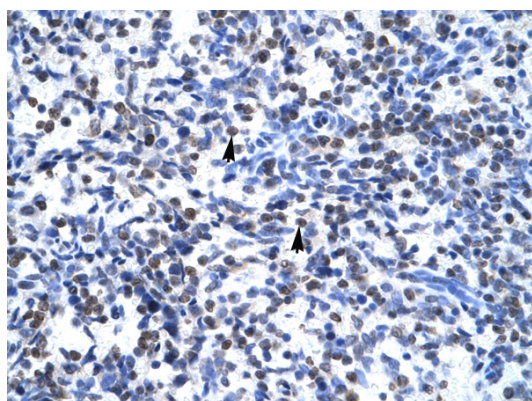
Form	Liquid
Purification	Affinity purified.
Buffer	PBS, 0.09% (w/v) Sodium azide and 2% Sucrose.
Preservative	0.09% (w/v) Sodium azide
Stabilizer	2% Sucrose
Concentration	Batch dependent: 0.5 - 1 mg/ml

Storage instruction	For continuous use, store undiluted antibody at 2-8°C for up to a week. For long-term storage, aliquot and store at -20°C or below. Storage in frost free freezers is not recommended. Avoid repeated freeze/thaw cycles. Suggest spin the vial prior to opening. The antibody solution should be gently mixed before use.
Note	For laboratory research only, not for drug, diagnostic or other use.

Bioinformation

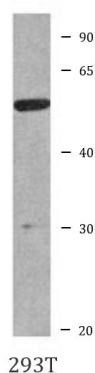
Gene Symbol	GCM1
Gene Full Name	glial cells missing homolog 1 (Drosophila)
Background	This gene encodes a DNA-binding protein with a gcm-motif (glial cell missing motif). The encoded protein is a homolog of the Drosophila glial cells missing gene (gcm). This protein binds to the GCM-motif (A/G)CCCGCAT, a novel sequence among known targets of DNA-binding proteins. The N-terminal DNA-binding domain confers the unique DNA-binding activity of this protein. [provided by RefSeq, Jul 2008]
Function	Transcription factor that is necessary for placental development. Binds to the trophoblast-specific element 2 (TSE2) of the aromatase gene enhancer. [UniProt]
Calculated Mw	49 kDa
PTM	Polyubiquitinated in the presence of UBE2D2 and FBXW2 (in vitro). [UniProt]
Cellular Localization	Nucleus. [UniProt]

Images



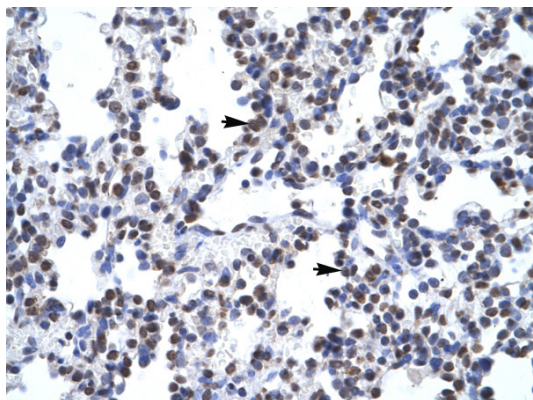
ARG40417 anti-GCM1 antibody IHC-P image

Immunohistochemistry: Paraffin-embedded Human spleen tissue stained with ARG40417 anti-GCM1 antibody.



ARG40417 anti-GCM1 antibody WB image

Western blot: 293T cell lysate stained with ARG40417 anti-GCM1 antibody at 1 µg/ml dilution.



ARG40417 anti-GCM1 antibody IHC-P image

Immunohistochemistry: Paraffin-embedded Human lung tissue stained with ARG40417 anti-GCM1 antibody.