

ARG40420 anti-TCF21 antibody

Package: 50 µl
Store at: -20°C

Summary

Product Description	Rabbit Polyclonal antibody recognizes TCF21
Tested Reactivity	Hu, Ms, Rat
Predict Reactivity	Cow, Dog, Gpig, Hrs, Rb
Tested Application	IHC-P, WB
Host	Rabbit
Clonality	Polyclonal
Isotype	IgG
Target Name	TCF21
Species	Human
Immunogen	Synthetic peptide around the N-terminal region of Human TCF21 (within the following region: SNCENGSPQKGRGGLGKRRKAPTKKSPLSGVSQEGKQVQRNAANARERAR).
Conjugation	Un-conjugated
Alternate Names	Class A basic helix-loop-helix protein 23; TCF-21; Epicardin; Pod-1; bHLHa23; Transcription factor 21; Capsulin; Podocyte-expressed 1; POD1

Application Instructions

Predict Reactivity Note	Predicted Homology Based On Immunogen Sequence: Cow: 100%; Dog: 100%; Guinea Pig: 100%; Horse: 100%; Rabbit: 100%						
Application table	<table> <tr> <th>Application</th><th>Dilution</th></tr> <tr> <td>IHC-P</td><td>5 µg/ml</td></tr> <tr> <td>WB</td><td>0.2 - 1 µg/ml</td></tr> </table>	Application	Dilution	IHC-P	5 µg/ml	WB	0.2 - 1 µg/ml
Application	Dilution						
IHC-P	5 µg/ml						
WB	0.2 - 1 µg/ml						
Application Note	<p>IHC-P: Antigen Retrieval: Heat mediation was performed in Citrate buffer (pH 6.0, epitope retrieval solution) for 20 min.</p> <p>* The dilutions indicate recommended starting dilutions and the optimal dilutions or concentrations should be determined by the scientist.</p>						
Positive Control	HeLa and Human lung						

Properties

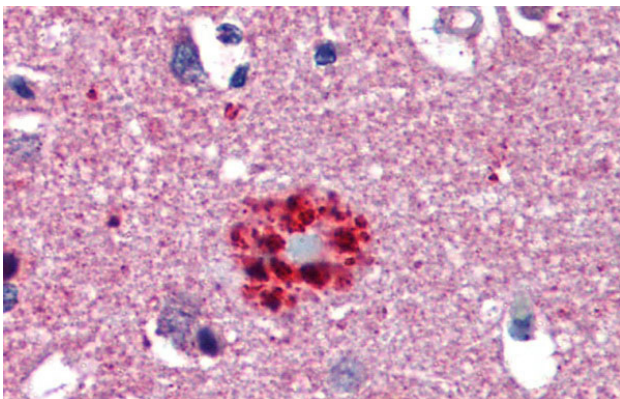
Form	Liquid
Purification	Affinity purified.
Buffer	PBS, 0.09% (w/v) Sodium azide and 2% Sucrose.
Preservative	0.09% (w/v) Sodium azide
Stabilizer	2% Sucrose

Concentration	Batch dependent: 0.5 - 1 mg/ml
Storage instruction	For continuous use, store undiluted antibody at 2-8°C for up to a week. For long-term storage, aliquot and store at -20°C or below. Storage in frost free freezers is not recommended. Avoid repeated freeze/thaw cycles. Suggest spin the vial prior to opening. The antibody solution should be gently mixed before use.
Note	For laboratory research only, not for drug, diagnostic or other use.

Bioinformation

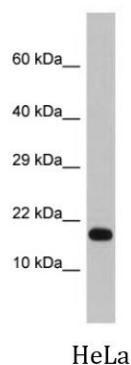
Gene Symbol	TCF21
Gene Full Name	transcription factor 21
Background	TCF21 encodes a transcription factor of the basic helix-loop-helix family. The TCF21 product is mesoderm specific, and expressed in embryonic epicardium, mesenchyme-derived tissues of lung, gut, gonad, and both mesenchymal and glomerular epithelial cells in the kidney. Two transcript variants encoding the same protein have been found for this gene. [provided by RefSeq, Jul 2008]
Function	Involved in epithelial-mesenchymal interactions in kidney and lung morphogenesis that include epithelial differentiation and branching morphogenesis. May play a role in the specification or differentiation of one or more subsets of epicardial cell types. [UniProt]
Calculated Mw	20 kDa
Cellular Localization	Nucleus. [UniProt]

Images



ARG40420 anti-TCF21 antibody IHC-P image

Immunohistochemistry: Paraffin-embedded Human brain, cortex, senile plaque tissue stained with ARG40420 anti-TCF21 antibody at 5 µg/ml dilution. Antigen Retrieval: Heat mediation was performed in Citrate buffer (pH 6.0, epitope retrieval solution) for 20 min.

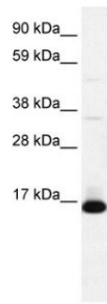


ARG40420 anti-TCF21 antibody WB image

Western blot: HeLa whole cell lysate stained with ARG40420 anti-TCF21 antibody at 1 µg/ml dilution.

ARG40420 anti-TCF21 antibody WB image

Western blot: Human lung tissue lysate stained with ARG40420 anti-TCF21 antibody at 0.2 - 1 µg/ml dilution.



Human lung