

## ARG40424 anti-NME3 / nm23 H3 antibody

Package: 50 µl  
Store at: -20°C

### Summary

Product Description	Rabbit Polyclonal antibody recognizes NME3 / nm23 H3
Tested Reactivity	Hu
Tested Application	WB
Host	Rabbit
Clonality	Polyclonal
Isotype	IgG
Target Name	NME3 / nm23 H3
Species	Human
Immunogen	Synthetic peptide around the N-terminal region of Human NME3 / nm23 H3. (within the following region: CLVLTIFANLFPAACTGAHERTF LAVKPDGVQRRVLGEIVRRFERKGFKL)
Conjugation	Un-conjugated
Alternate Names	Nucleoside diphosphate kinase C; NDPK-C; NDPKC; NM23-H3; Nucleoside diphosphate kinase 3; NDP kinase 3; EC 2.7.4.6; DR-nm23; nm23-H3; NM23H3; c371H6.2; NDK 3

### Application Instructions

Application table	Application	Dilution
	WB	1 µg/ml
Application Note	* The dilutions indicate recommended starting dilutions and the optimal dilutions or concentrations should be determined by the scientist.	
Observed Size	~ 19 kDa	

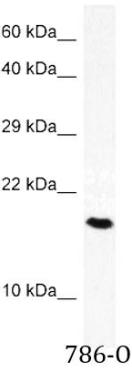
### Properties

Form	Liquid
Purification	Affinity purified.
Buffer	PBS, 0.09% (w/v) Sodium azide and 2% Sucrose.
Preservative	0.09% (w/v) Sodium azide
Stabilizer	2% Sucrose
Concentration	Batch dependent: 0.5 - 1 mg/ml
Storage instruction	For continuous use, store undiluted antibody at 2-8°C for up to a week. For long-term storage, aliquot and store at -20°C or below. Storage in frost free freezers is not recommended. Avoid repeated freeze/thaw cycles. Suggest spin the vial prior to opening. The antibody solution should be gently mixed before use.
Note	For laboratory research only, not for drug, diagnostic or other use.

Bioinformation

Gene Symbol	NME3
Gene Full Name	NME/NM23 nucleoside diphosphate kinase 3
Function	Major role in the synthesis of nucleoside triphosphates other than ATP. The ATP gamma phosphate is transferred to the NDP beta phosphate via a ping-pong mechanism, using a phosphorylated active-site intermediate. Probably has a role in normal hematopoiesis by inhibition of granulocyte differentiation and induction of apoptosis. [UniProt]
Calculated Mw	19 kDa

Images



ARG40424 anti-NME3 / nm23 H3 antibody WB image

Western blot: 786-O whole cell lysate stained with ARG40424 anti-NME3 / nm23 H3 antibody.