

## ARG40443 anti-MGAT1 antibody

Package: 100 µl  
Store at: -20°C

### Summary

Product Description	Rabbit Polyclonal antibody recognizes MGAT1
Tested Reactivity	Hu, Ms, Rat
Tested Application	ICC/IF, WB
Host	Rabbit
Clonality	Polyclonal
Isotype	IgG
Target Name	MGAT1
Species	Human
Immunogen	Recombinant fusion protein corresponding to aa. 156-445 of Human MGAT1 (NP_001108092.1).
Conjugation	Un-conjugated
Alternate Names	Alpha-1,3-mannosyl-glycoprotein 2-beta-N-acetylglucosaminyltransferase; GLCNAC-TI; GNT-I; GNT-1; GLCT1; GLYT1; MGAT; GlcNAc-T I; N-glycosyl-oligosaccharide-glycoprotein N-acetylglucosaminyltransferase I; EC 2.4.1.101

### Application Instructions

Application table	Application	Dilution
	ICC/IF	1:50 - 1:200
	WB	1:500 - 1:2000
Application Note	* The dilutions indicate recommended starting dilutions and the optimal dilutions or concentrations should be determined by the scientist.	
Positive Control	Mouse liver	
Observed Size	57 kDa	

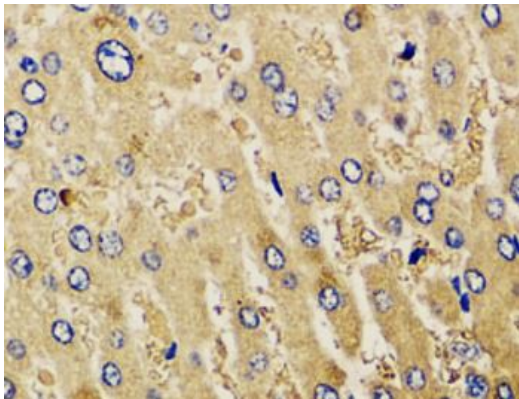
### Properties

Form	Liquid
Purification	Affinity purified.
Buffer	PBS (pH 7.3), 0.02% Sodium azide and 50% Glycerol.
Preservative	0.02% Sodium azide
Stabilizer	50% Glycerol
Storage instruction	For continuous use, store undiluted antibody at 2-8°C for up to a week. For long-term storage, aliquot and store at -20°C. Storage in frost free freezers is not recommended. Avoid repeated freeze/thaw cycles. Suggest spin the vial prior to opening. The antibody solution should be gently mixed before use.

Bioinformation

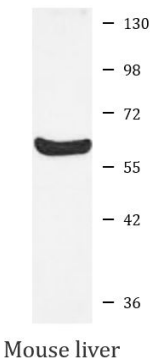
Gene Symbol	MGAT1
Gene Full Name	mannosyl (alpha-1,3-)-glycoprotein beta-1,2-N-acetylglucosaminyltransferase
Background	There are believed to be over 100 different glycosyltransferases involved in the synthesis of protein-bound and lipid-bound oligosaccharides. UDP-N-acetylglucosamine:alpha-3-D-mannoside beta-1,2-N-acetylglucosaminyltransferase I is a medial-Golgi enzyme essential for the synthesis of hybrid and complex N-glycans. The protein, encoded by a single exon, shows typical features of a type II transmembrane protein. The protein is believed to be essential for normal embryogenesis. Several variants encoding the same protein have been found for this gene. [provided by RefSeq, Jul 2008]
Function	Initiates complex N-linked carbohydrate formation. Essential for the conversion of high-mannose to hybrid and complex N-glycans. [UniProt]
Calculated Mw	51 kDa
Cellular Localization	Golgi apparatus membrane; Single-pass type II membrane protein. [UniProt]

Images



ARG40443 anti-MGAT1 antibody IHC-P image

Immunohistochemistry: Paraffin-embedded Human liver injury stained with ARG40443 anti-MGAT1 antibody at 1:100 dilution.



ARG40443 anti-MGAT1 antibody WB image

Western blot: 25 µg of Mouse liver lysate stained with ARG40443 anti-MGAT1 antibody at 1:1000 dilution.