

ARG40452
anti-ME2 antibodyPackage: 100 µl
Store at: -20°C

Summary

Product Description	Rabbit Polyclonal antibody recognizes ME2
Tested Reactivity	Hu
Tested Application	WB
Host	Rabbit
Clonality	Polyclonal
Isotype	IgG
Target Name	ME2
Species	Human
Immunogen	Recombinant fusion protein corresponding to aa. 220-479 of Human ME2 (NP_001161807.1).
Conjugation	Un-conjugated
Alternate Names	NAD-dependent malic enzyme, mitochondrial; NAD-ME; ODS1; Malic enzyme 2; EC 1.1.1.38

Application Instructions

Application table	Application	Dilution
	WB	1:500 - 1:2000
Application Note	* The dilutions indicate recommended starting dilutions and the optimal dilutions or concentrations should be determined by the scientist.	
Positive Control	LO2	
Observed Size	65 kDa	

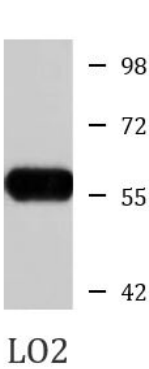
Properties

Form	Liquid
Purification	Affinity purified.
Buffer	PBS (pH 7.3), 0.02% Sodium azide and 50% Glycerol.
Preservative	0.02% Sodium azide
Stabilizer	50% Glycerol
Storage instruction	For continuous use, store undiluted antibody at 2-8°C for up to a week. For long-term storage, aliquot and store at -20°C. Storage in frost free freezers is not recommended. Avoid repeated freeze/thaw cycles. Suggest spin the vial prior to opening. The antibody solution should be gently mixed before use.
Note	For laboratory research only, not for drug, diagnostic or other use.

Bioinformation

Gene Symbol	ME2
Gene Full Name	malic enzyme 2, NAD(+)-dependent, mitochondrial
Background	This gene encodes a mitochondrial NAD-dependent malic enzyme, a homotetrameric protein, that catalyzes the oxidative decarboxylation of malate to pyruvate. It had previously been weakly linked to a syndrome known as Friedreich ataxia that has since been shown to be the result of mutation in a completely different gene. Certain single-nucleotide polymorphism haplotypes of this gene have been shown to increase the risk for idiopathic generalized epilepsy. Alternatively spliced transcript variants encoding different isoforms found for this gene. [provided by RefSeq, Dec 2009]
Calculated Mw	65 kDa
Cellular Localization	Mitochondrion matrix. [UniProt]

Images



ARG40452 anti-ME2 antibody WB image

Western blot: 25 µg of LO2 cell lysate stained with ARG40452 anti-ME2 antibody at 1:1000 dilution.