

ARG40487 anti-MYH3 antibody

Package: 50 µg
Store at: -20°C

Summary

Product Description	Rabbit Polyclonal antibody recognizes MYH3
Tested Reactivity	Hu, Ms
Tested Application	IHC-P, WB
Specificity	This antibody is human, mouse and rat reactive. The antibody is predicted to not cross-react with other members of the myosin heavy chain family.
Host	Rabbit
Clonality	Polyclonal
Isotype	IgG
Target Name	MYH3
Species	Human
Immunogen	19 aa (N-terminus) of Human MYH3.
Conjugation	Un-conjugated
Alternate Names	Myosin heavy chain 3; MYHSE1; Myosin heavy chain, fast skeletal muscle, embryonic; Muscle embryonic myosin heavy chain; HEMHC; MYHC-EMB; Myosin-3; SMHCE

Application Instructions

Application table	Application	Dilution
	IHC-P	5 µg/ml
	WB	1 µg/ml
Application Note	* The dilutions indicate recommended starting dilutions and the optimal dilutions or concentrations should be determined by the scientist.	
Positive Control	Jurkat	

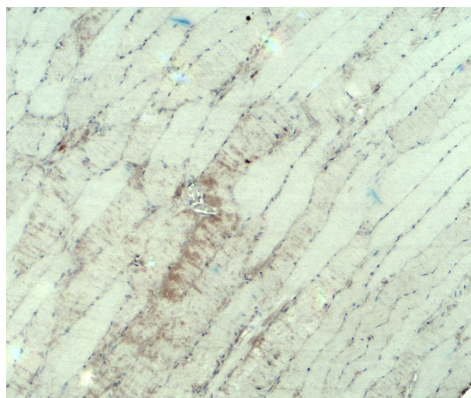
Properties

Form	Liquid
Purification	Affinity purification with immunogen.
Buffer	PBS and 0.02% Sodium azide.
Preservative	0.02% Sodium azide
Concentration	1 mg/ml
Storage instruction	For continuous use, store undiluted antibody at 2-8°C for up to a week. For long-term storage, aliquot and store at -20°C or below. Storage in frost free freezers is not recommended. Avoid repeated freeze/thaw cycles. Suggest spin the vial prior to opening. The antibody solution should be gently mixed before use.

Bioinformation

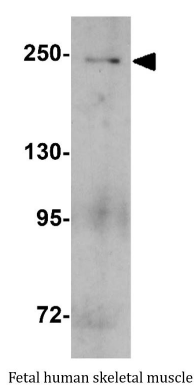
Gene Symbol	MYH3
Gene Full Name	myosin, heavy chain 3, skeletal muscle, embryonic
Background	Myosin is a major contractile protein which converts chemical energy into mechanical energy through the hydrolysis of ATP. Myosin is a hexameric protein composed of a pair of myosin heavy chains (MYH) and two pairs of nonidentical light chains. This gene is a member of the MYH family and encodes a protein with an IQ domain and a myosin head-like domain. Mutations in this gene have been associated with two congenital contracture (arthrogryposis) syndromes, Freeman-Sheldon syndrome and Sheldon-Hall syndrome. [provided by RefSeq, Jul 2008]
Function	Muscle contraction. [UniProt]
Calculated Mw	224 kDa
Cellular Localization	Cytoplasm, myofibril. Note=Thick filaments of the myofibrils. [UniProt]

Images



ARG40487 anti-MYH3 antibody IHC-P image

Immunohistochemistry: Paraffin-embedded Mouse skeletal muscle stained with ARG40487 anti-MYH3 antibody at 5 µg/ml dilution.



ARG40487 anti-MYH3 antibody WB image

Western blot: Fetal human skeletal muscle lysate stained with ARG40487 anti-MYH3 antibody at 1 µg/ml dilution.